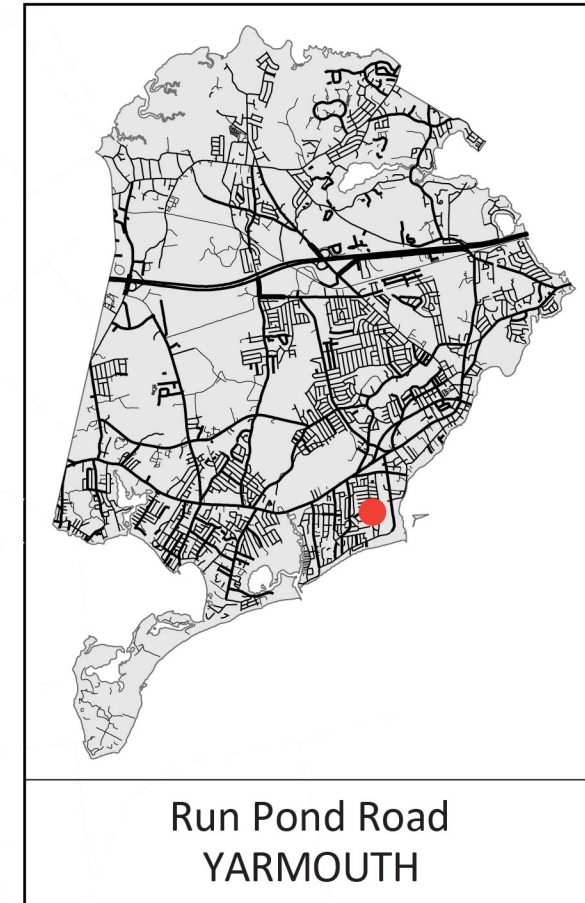


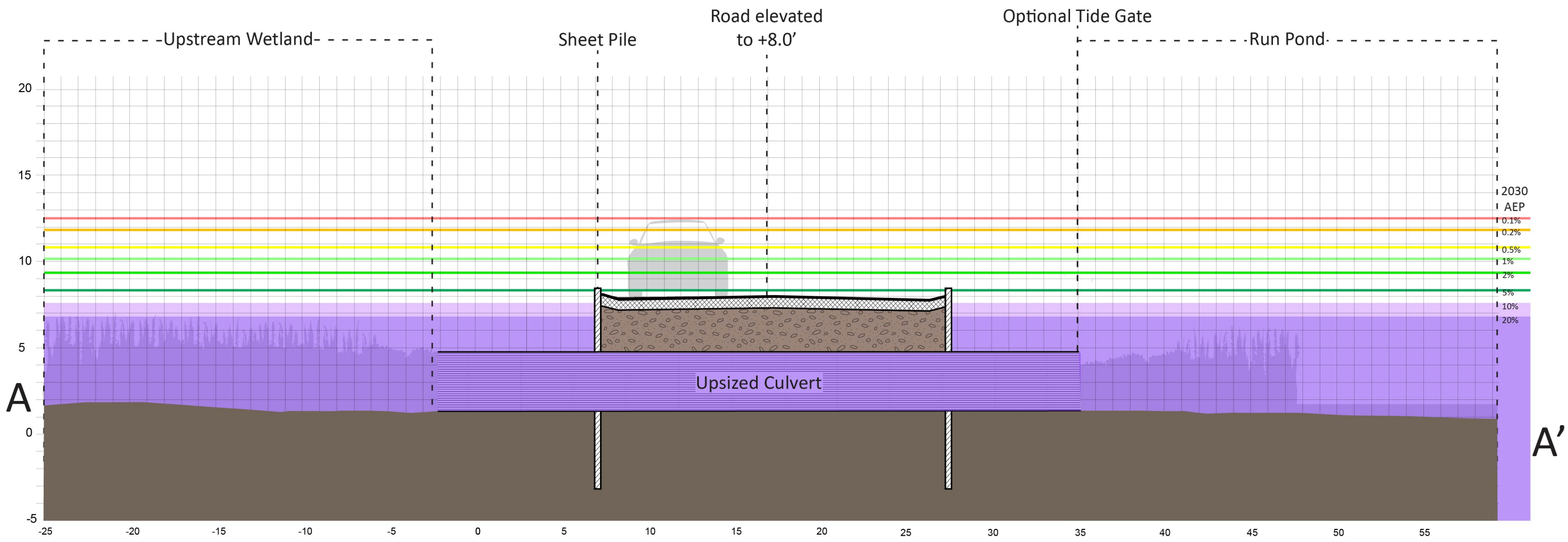
EXISTING CONDITIONS
Run Pond Road, Yarmouth



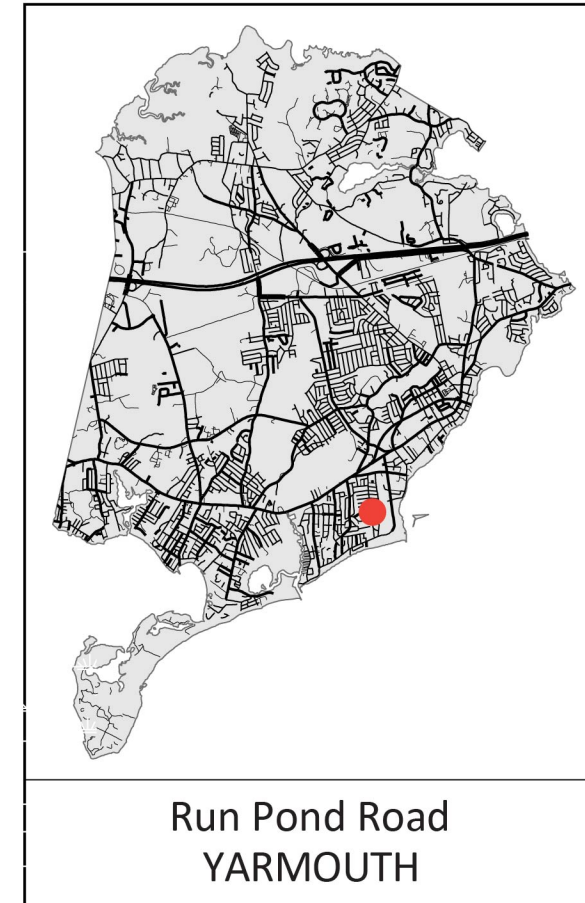
ALTERNATIVE 1: GRAY

1361 linear feet of town-owned road are elevated to 8.0 feet with 4:1 traditionally vegetated side slopes and sheet pile. The culvert is replaced with a larger culvert and tide gate to provide moderate flood protection to areas to the west.

Note: Project overlap with wetland areas, rights of way and property lines is approximate and needs confirmation with a site survey



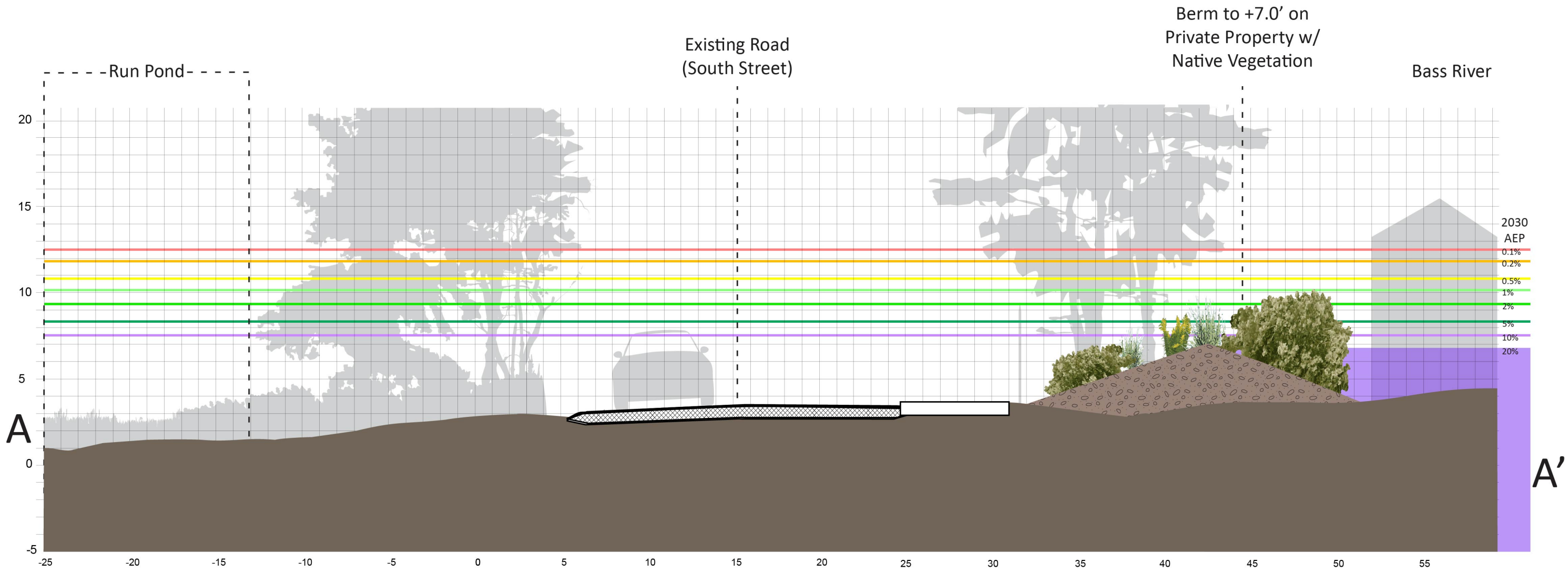
ALTERNATIVE 1: GRAY
Run Pond Road, Yarmouth



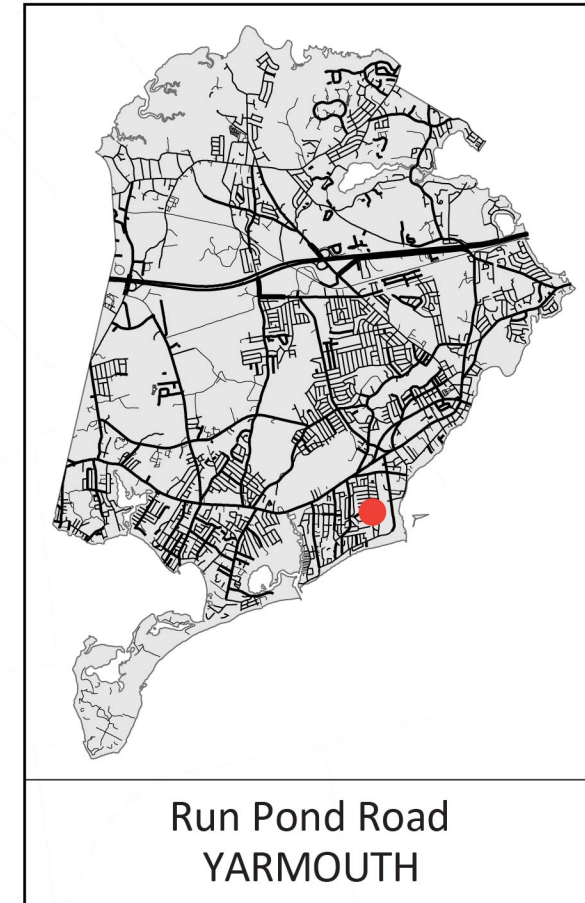
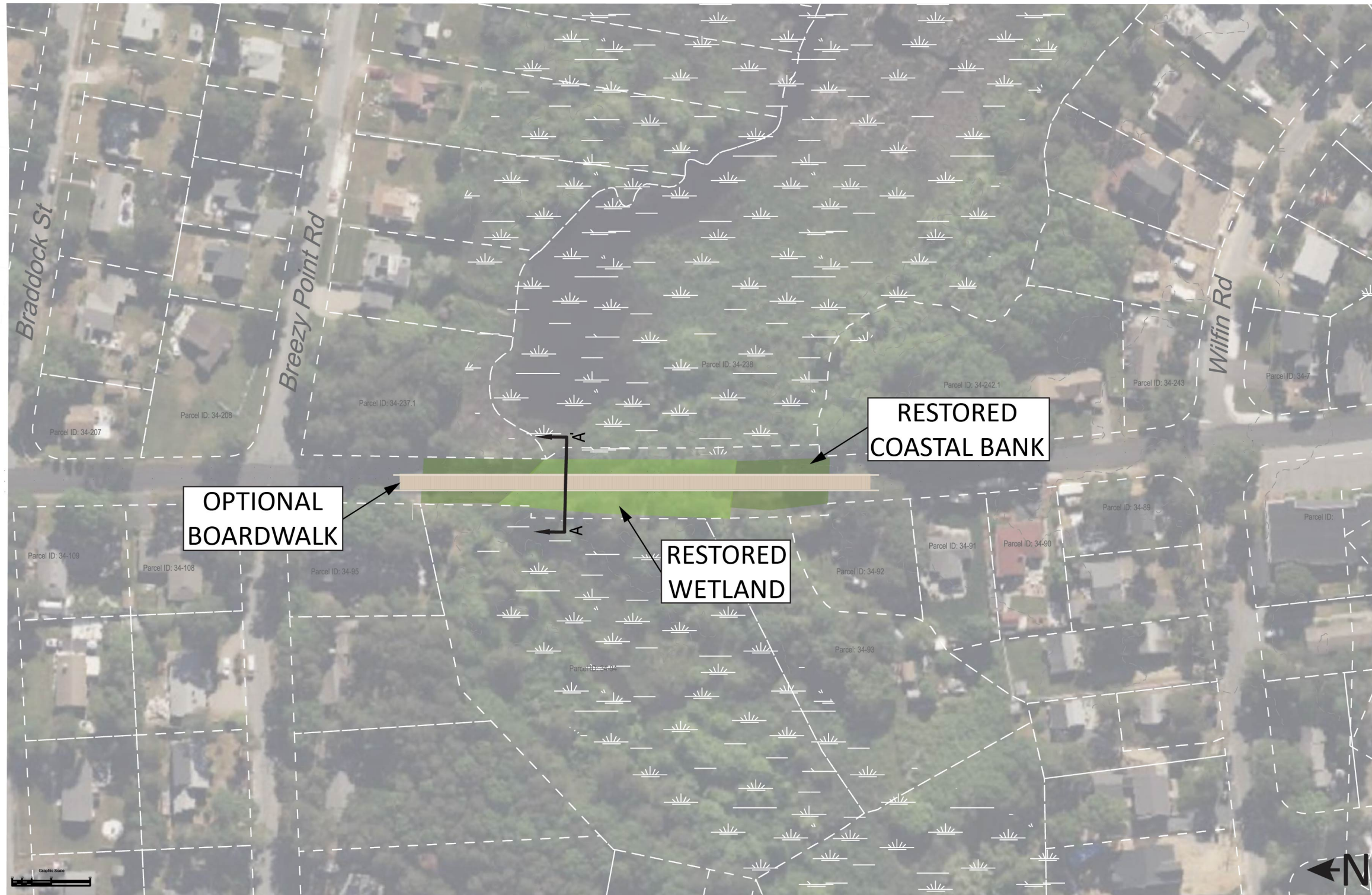
ALTERNATIVE 2: HYBRID

Low spots in the land between Run Pond and the Bass River along South Street are patched, and a tide gate is added to the culvert, protecting this segment of road to an elevation of 7.0 feet.

Note: Project overlap with wetland areas, rights of way and property lines is approximate and needs confirmation with a site survey



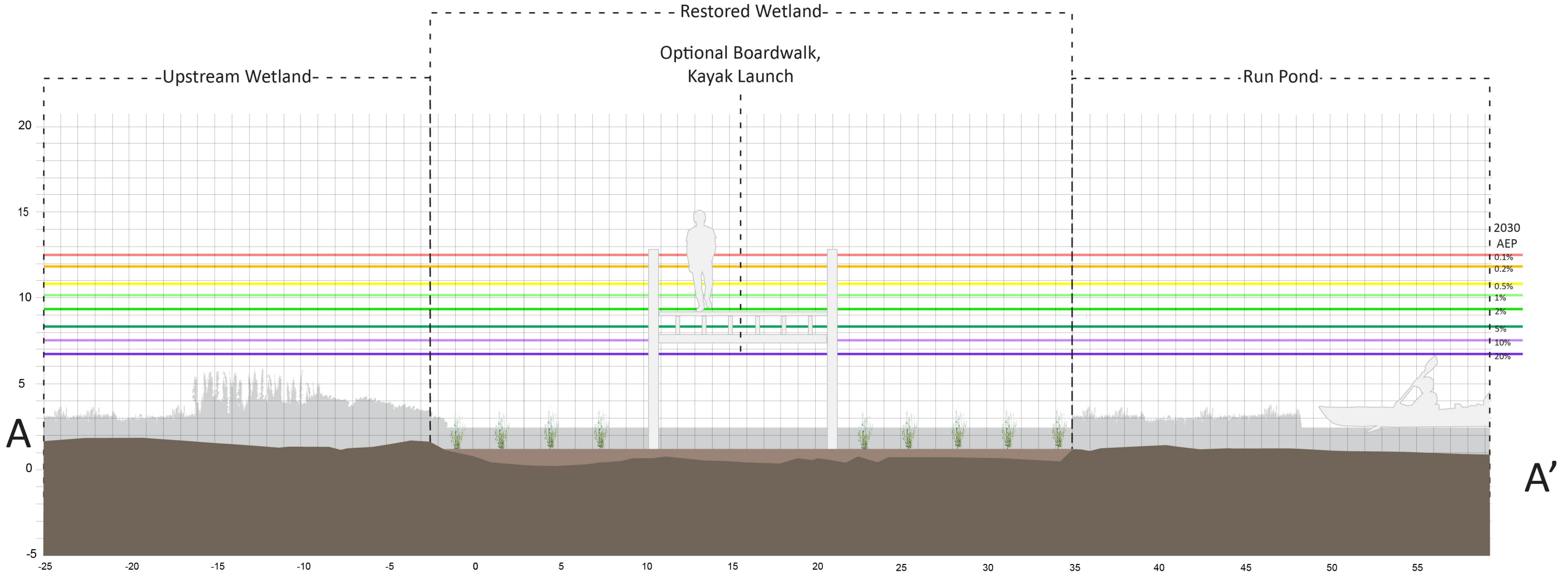
ALTERNATIVE 2: HYBRID
Run Pond Road, Yarmouth



ALTERNATIVE 3: GREEN

350 linear feet of town-owned road are removed, the culvert is removed, and the road bed is excavated. The soil is replaced and native wetland plants are installed. A boardwalk to maintain the pedestrian connection and other recreational amenities could be added.

Note: Project overlap with wetland areas, rights of way and property lines is approximate and needs confirmation with a site survey



ALTERNATIVE 3: GREEN

Run Pond Road, Yarmouth

RUN POND ROAD, YARMOUTH

Summary of alternatives

	Description	Critical Elevation	Annual Exceedance Probability			Vulnerable to Tidal Flooding	Impacts to Wetlands	Impacts to Private Property	Estimated Cost*
			2030	2050	2070				
EXISTING	A segment of 20 foot wide road with a culvert crossing.	2.9 feet	20%	100%	100%	2070	N/A	N/A	N/A
ALTERNATIVE 1: GRAY	1361 linear feet of town-owned road are elevated to 8.0 feet with 4:1 traditionally vegetated side slopes and sheet pile. The culvert is replaced with a larger culvert and tide gate to provide moderate flood protection to areas to the west.	8.0 feet	5%	20%	100%	N/A	Possible Positive	Yes	\$596,000
ALTERNATIVE 2: HYBRID	Low spots in the land between Run Pond and the Bass River along South Street are patched, and a tide gate is added to the culvert, protecting this segment of road to an elevation of 7.0 feet.	7.0 feet	10%	20%	100%	N/A	N/A	Yes	\$80,000
ALTERNATIVE 3: GREEN	350 linear feet of town-owned road are removed, the culvert is removed, and the road bed is excavated. The soil is replaced and native wetland plants are installed. Optional boardwalk and recreational amenities are not included in costing.	N/A	0%	0%	0%	N/A	Positive	N/A	\$104,000

*Installed material cost +20% contingency. Excludes design, permitting, mobilization, stormwater and wastewater infrastructure, and site controls. Costs based on RSMeans 2021 cost book and adjusted for inflation and region.