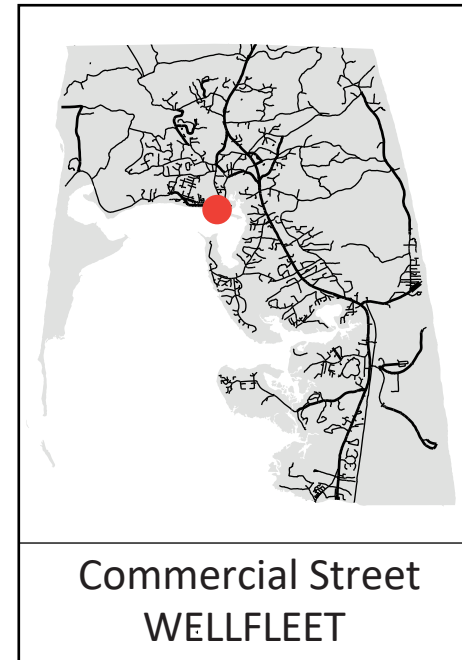
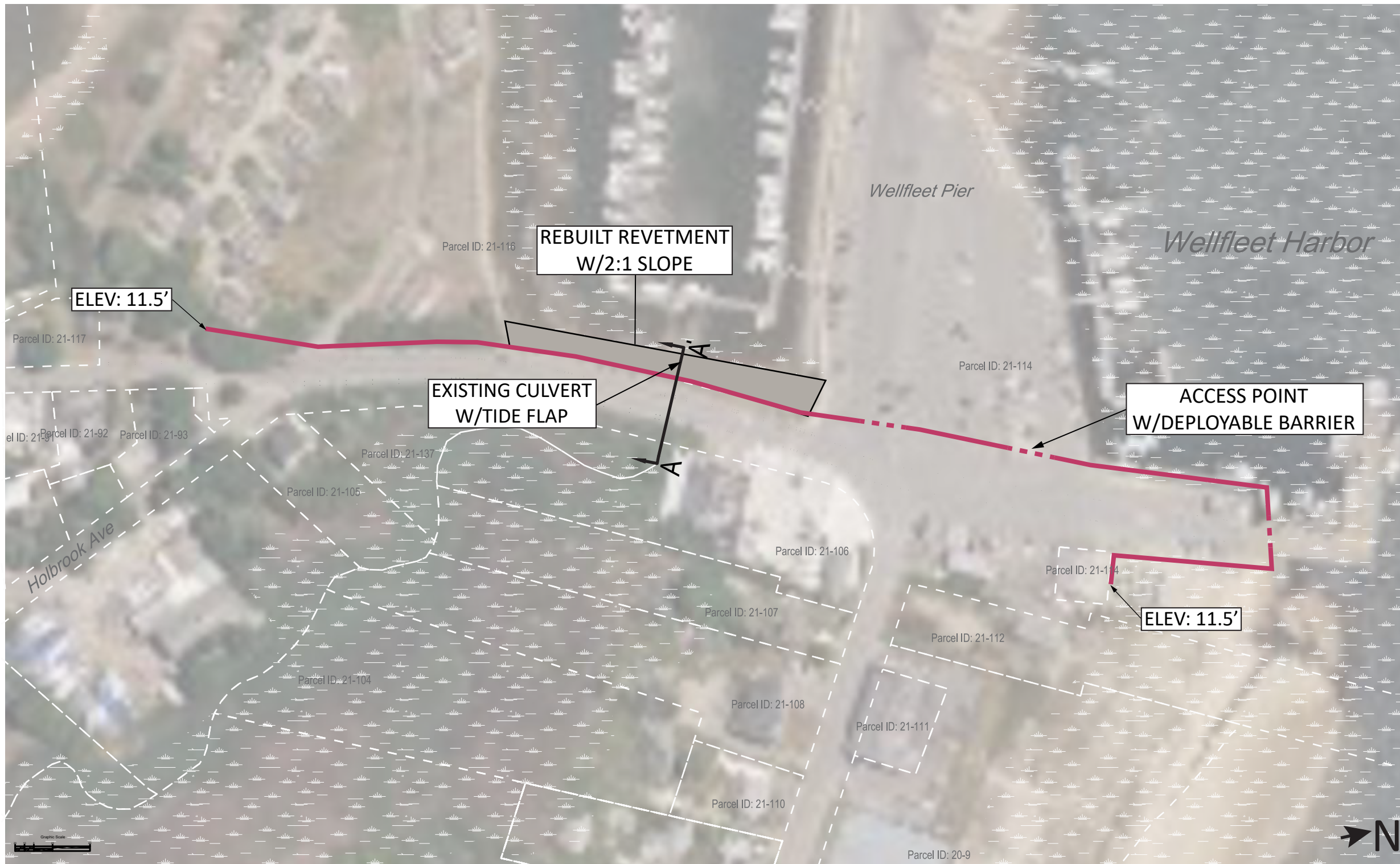


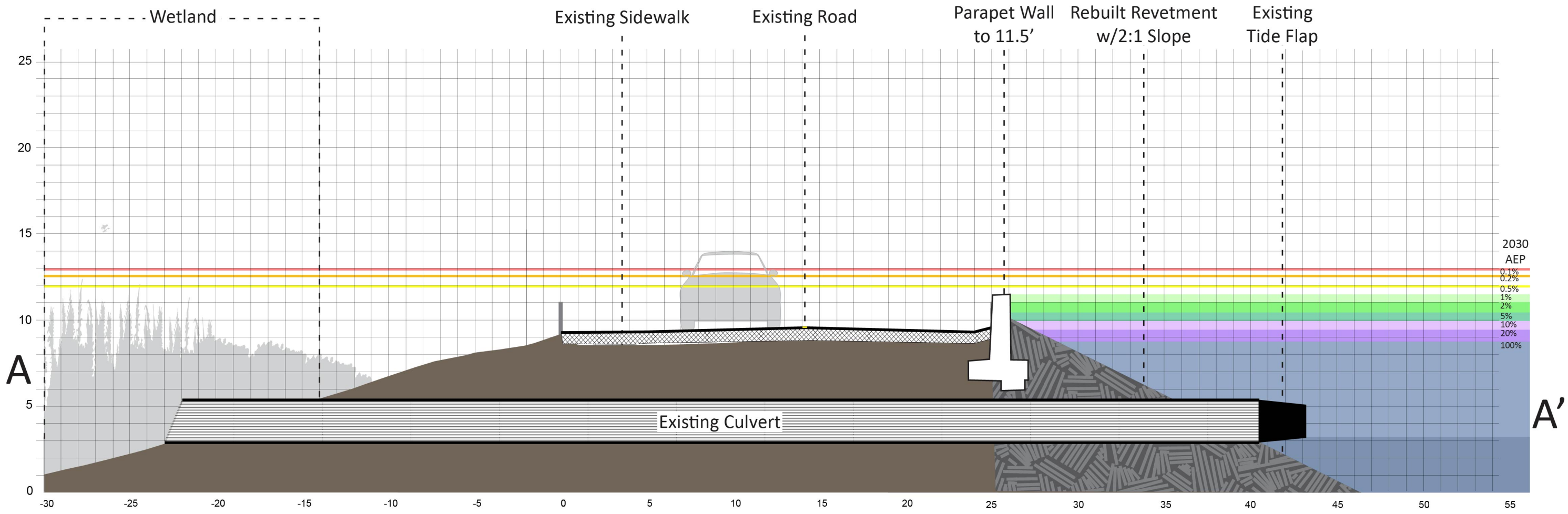
EXISTING CONDITIONS
Commercial Street, Wellfleet



ALTERNATIVE 1: GRAY

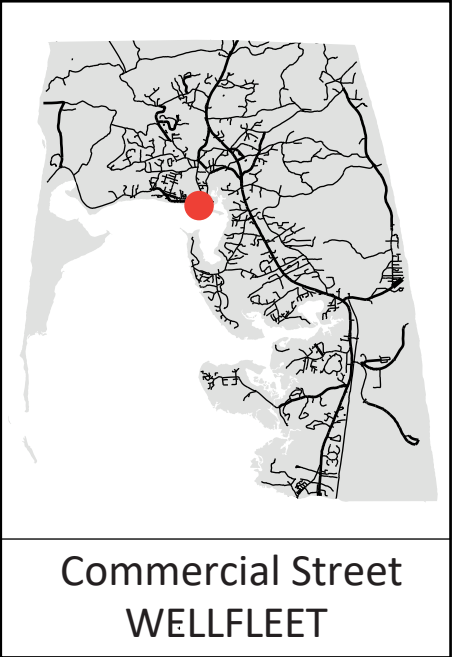
A parapet wall to 11.5 feet and a rebuilt revetment along the Mayo Creek crossing tie in to a high point near Mac's on the Pier. Sliding gates or deployable barriers are necessary at the parking lot and dock to allow for entry and exit. Connections to the alternative selected for Kendrick Avenue must be considered.

Note: Project overlap with wetland areas, rights of way and property lines is approximate and needs confirmation with a site survey



ALTERNATIVE 1: GRAY

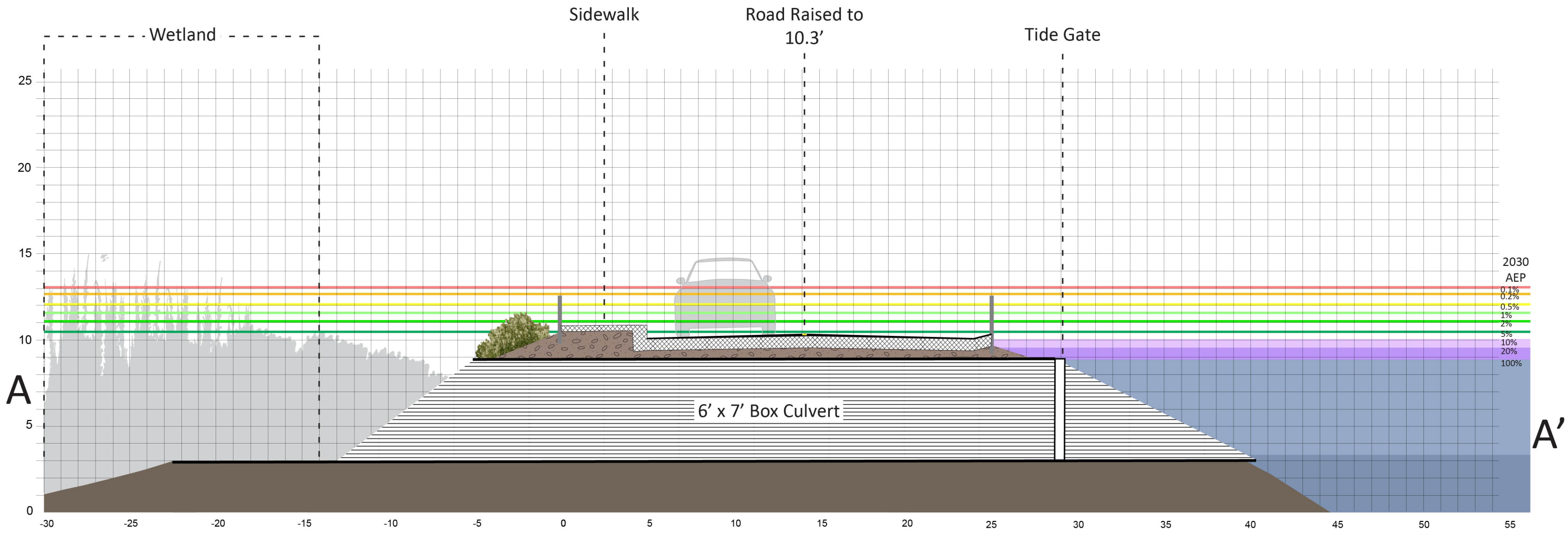
Commercial Street, Wellfleet



ALTERNATIVE 2: HYBRID

1079 linear feet of road are elevated to 10.3 feet with 3:1 side slopes. A 6' x 7' box culvert and operable tide gate are installed at the crossing of Mayo Creek, consistent with recommendations from an existing project. Connections to the alternative selected for Kendrick Avenue must be considered.

Note: Project overlap with wetland areas, rights of way and property lines is approximate and needs confirmation with a site survey



ALTERNATIVE 2: HYBRID

Commercial Street, Wellfleet

COMMERCIAL STREET, WELLFLEET

Summary of alternatives

	Description	Critical Elevation	Annual Exceedance Probability			Vulnerable to Tidal Flooding	Impacts to Wetlands	Impacts to Private Property	Estimated Cost*
			2030	2050	2070				
EXISTING	A segment of 20 foot wide road with a creek crossing and culvert.	8.2 feet	100%	100%	100%	2070	N/A	N/A	N/A
ALTERNATIVE 1: GRAY	A parapet wall to 11.5 feet and a rebuilt revetment along the Mayo Creek crossing tie in to a high point near Mac's on the Pier. Sliding gates or deployable barriers are necessary at the parking lot and dock to allow for entry and exit. Connections to the alternative selected for Kendrick Avenue must be considered.	11.5 feet	1%	10%	100%	N/A	Negative	Yes	\$454,000
ALTERNATIVE 2: HYBRID	1079 linear feet of road are elevated to 10.3 feet with 3:1 side slopes. A 6' x 7' box culvert and operable tide gate are installed at the Mayo Creek crossing, consistent with recommendations from an existing project. Connections to the alternative selected for Kendrick Avenue must be considered.	10.3 feet	5%	100%	100%	N/A	Possible Positive	Yes	\$519,000

*Installed material cost +20% contingency. Excludes design, permitting, mobilization, stormwater and wastewater infrastructure, and site controls. Costs based on RSMeans 2021 cost book and adjusted for inflation and region.