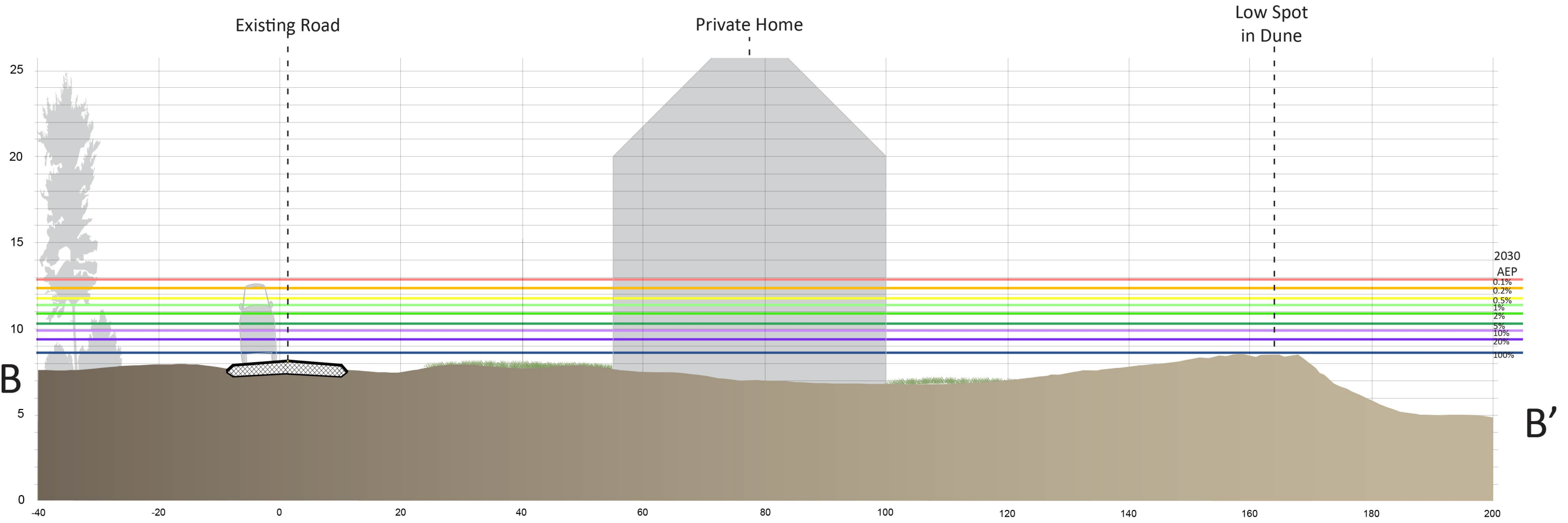
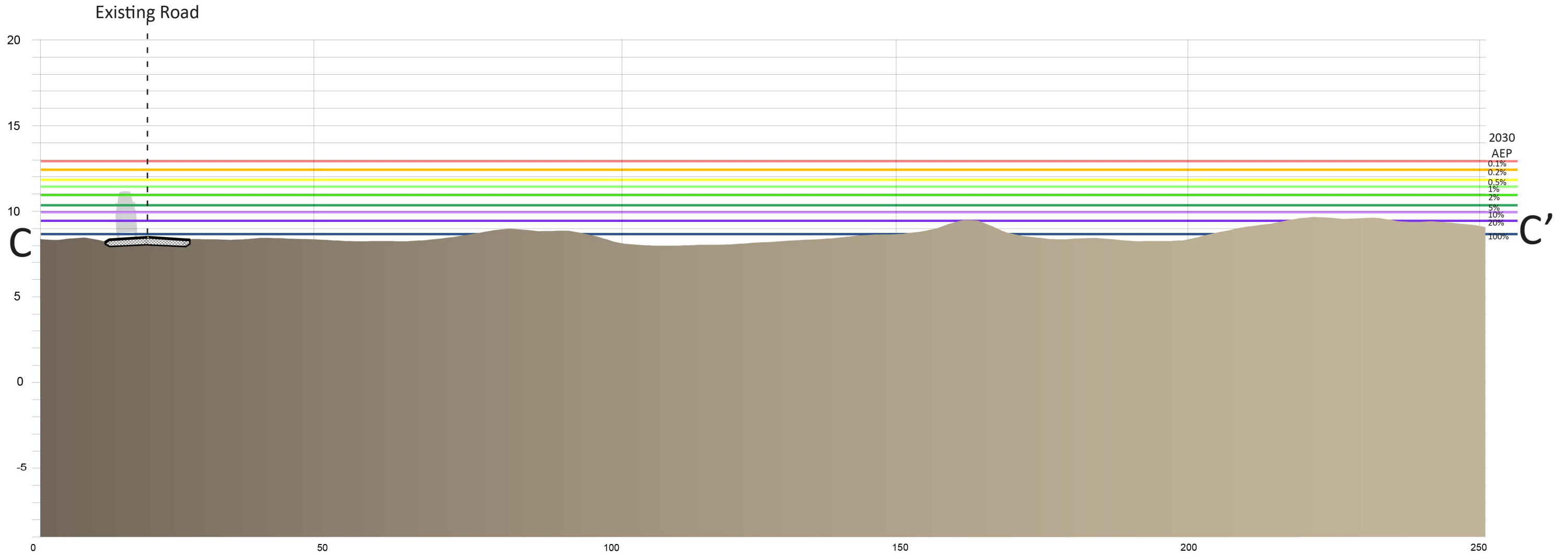


EXISTING CONDITIONS
Kendrick Avenue, Wellfleet

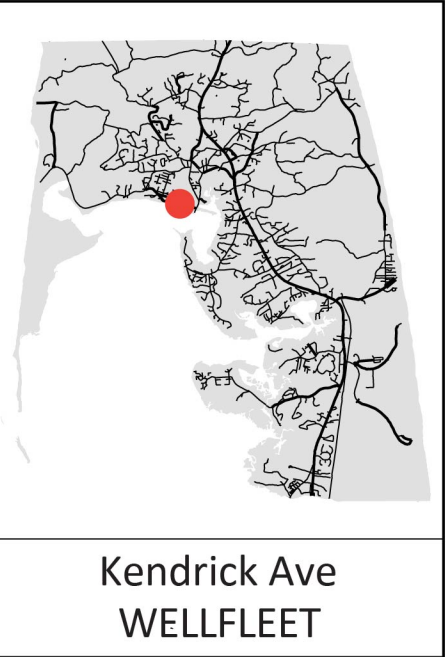
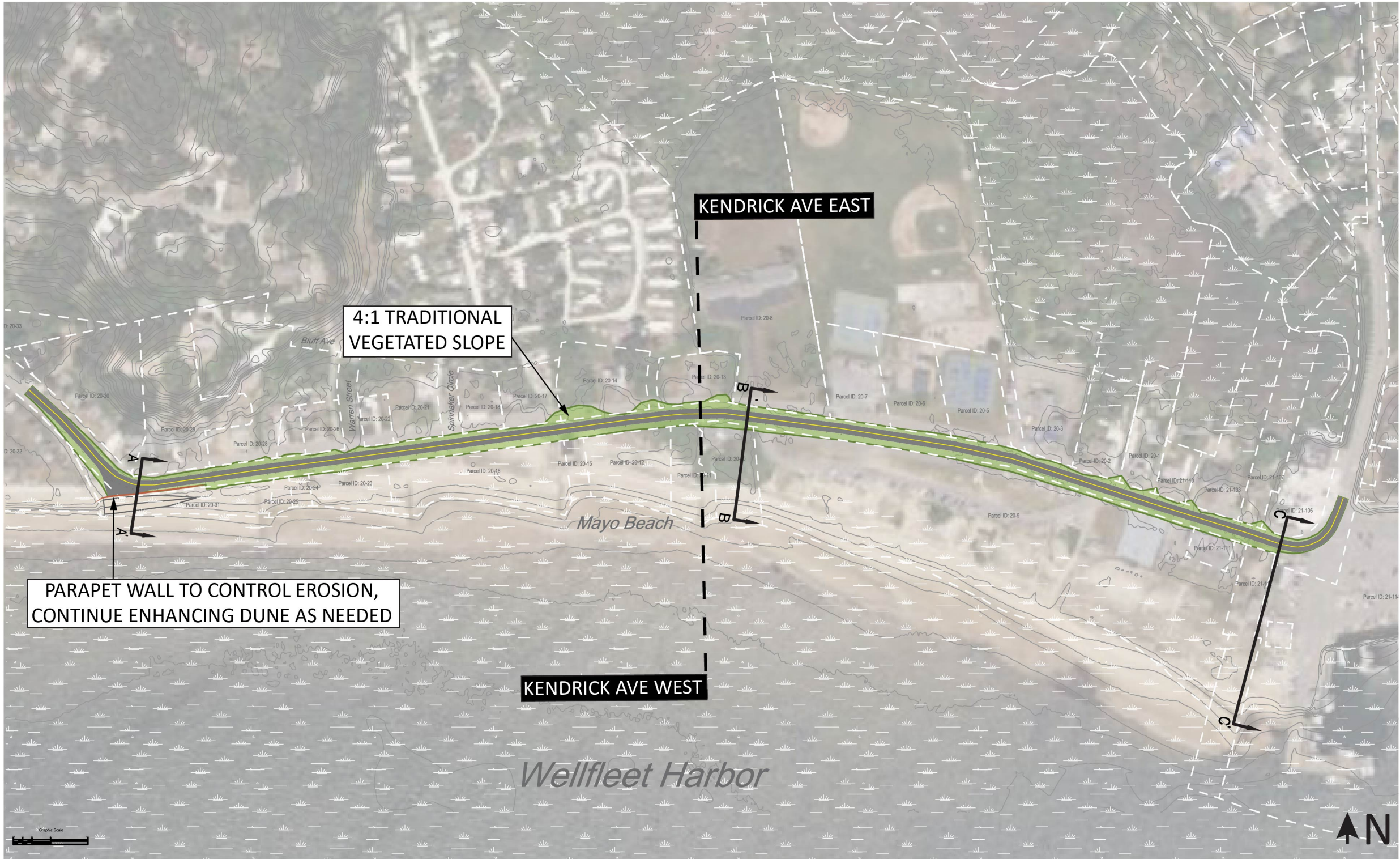


EXISTING CONDITIONS
Kendrick Avenue, Wellfleet



EXISTING CONDITIONS

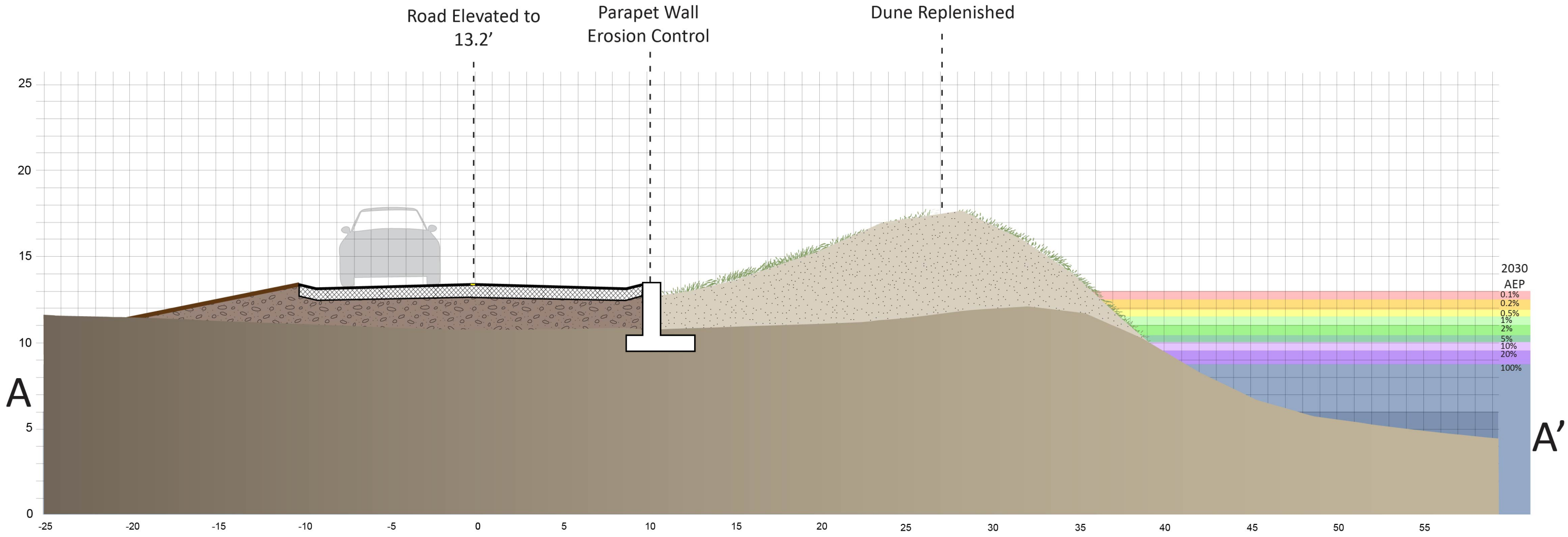
Kendrick Avenue, Wellfleet



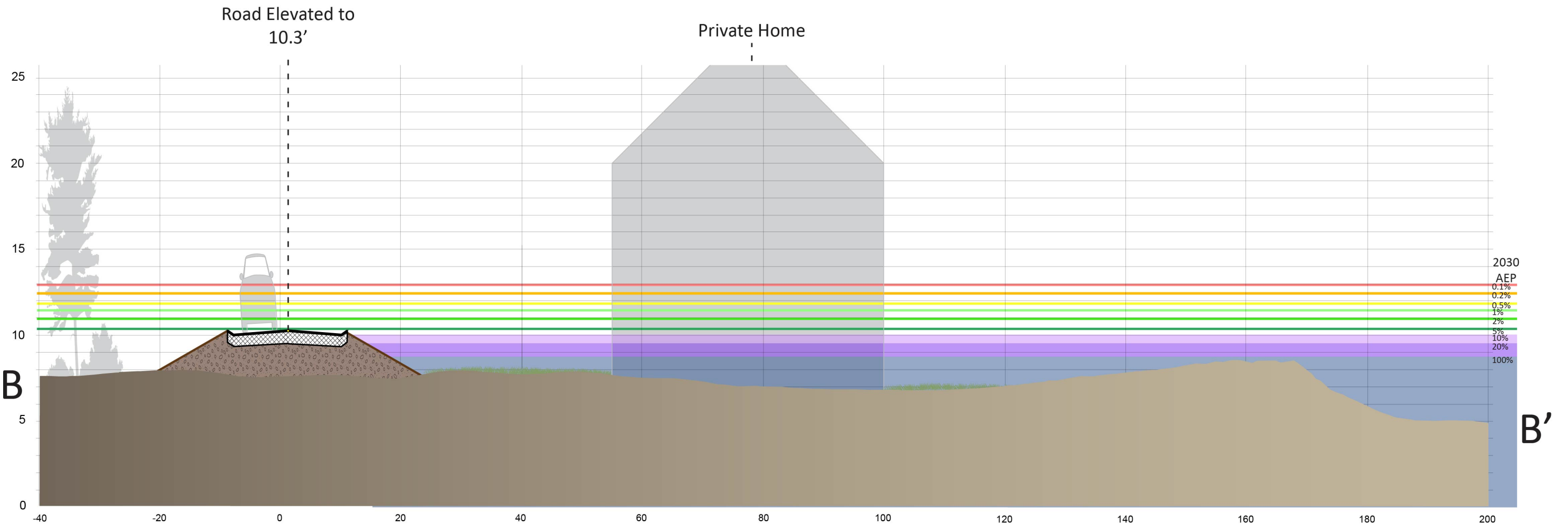
ALTERNATIVE 1: GRAY

2830 linear feet of Town-owned road are elevated from a lowest point of 7.6 feet to a lowest point of 10.3 feet. Parapet wall and dune replenishment are used to control erosion at the western end of the road segment. Connection to the alternative chosen for Commercial Street must be considered.

Note: Project overlap with wetland areas, rights of way and property lines is approximate and needs confirmation with a site survey

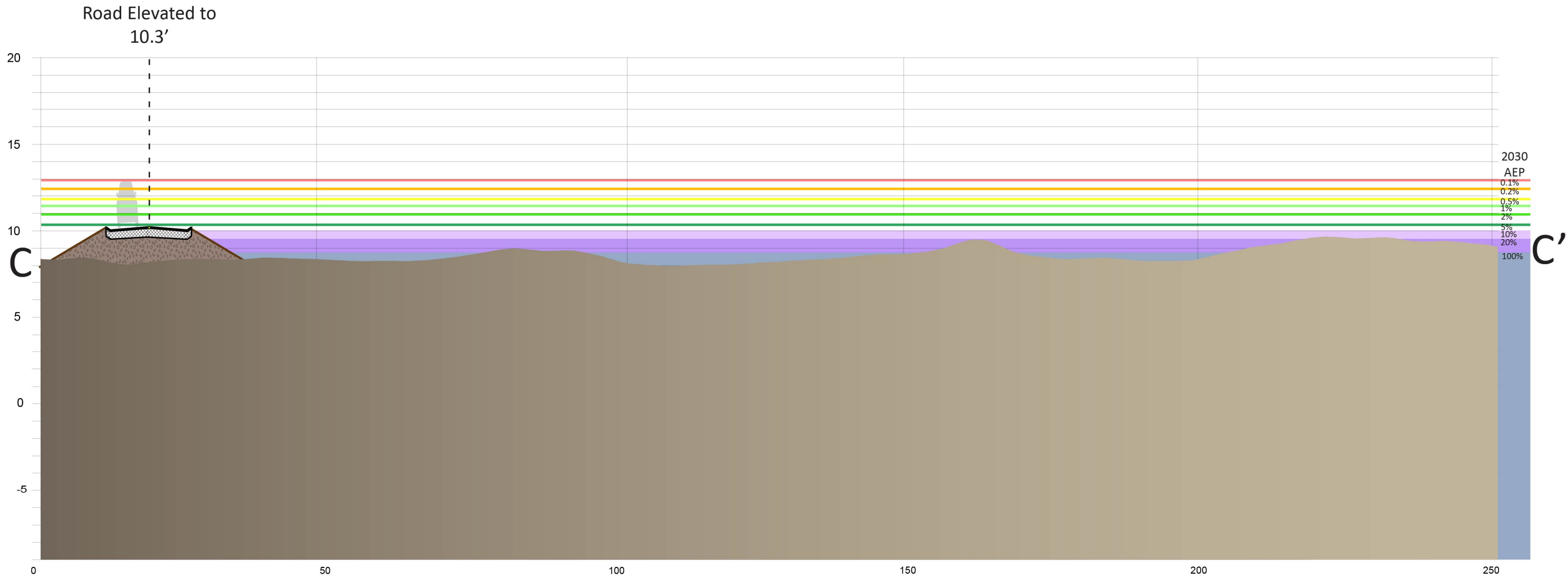


ALTERNATIVE 1: GRAY
Kendrick Avenue, Wellfleet

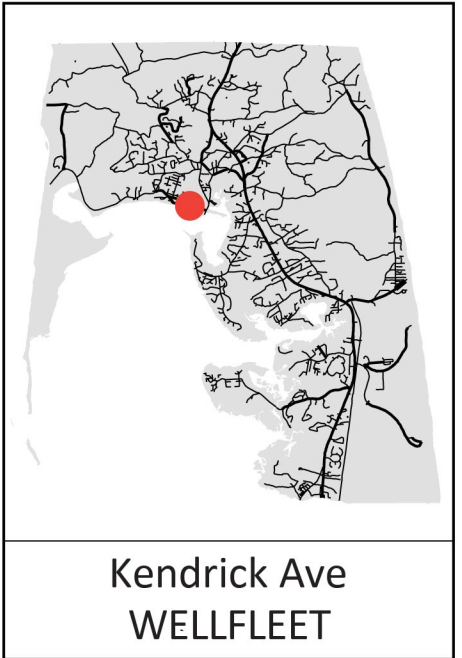
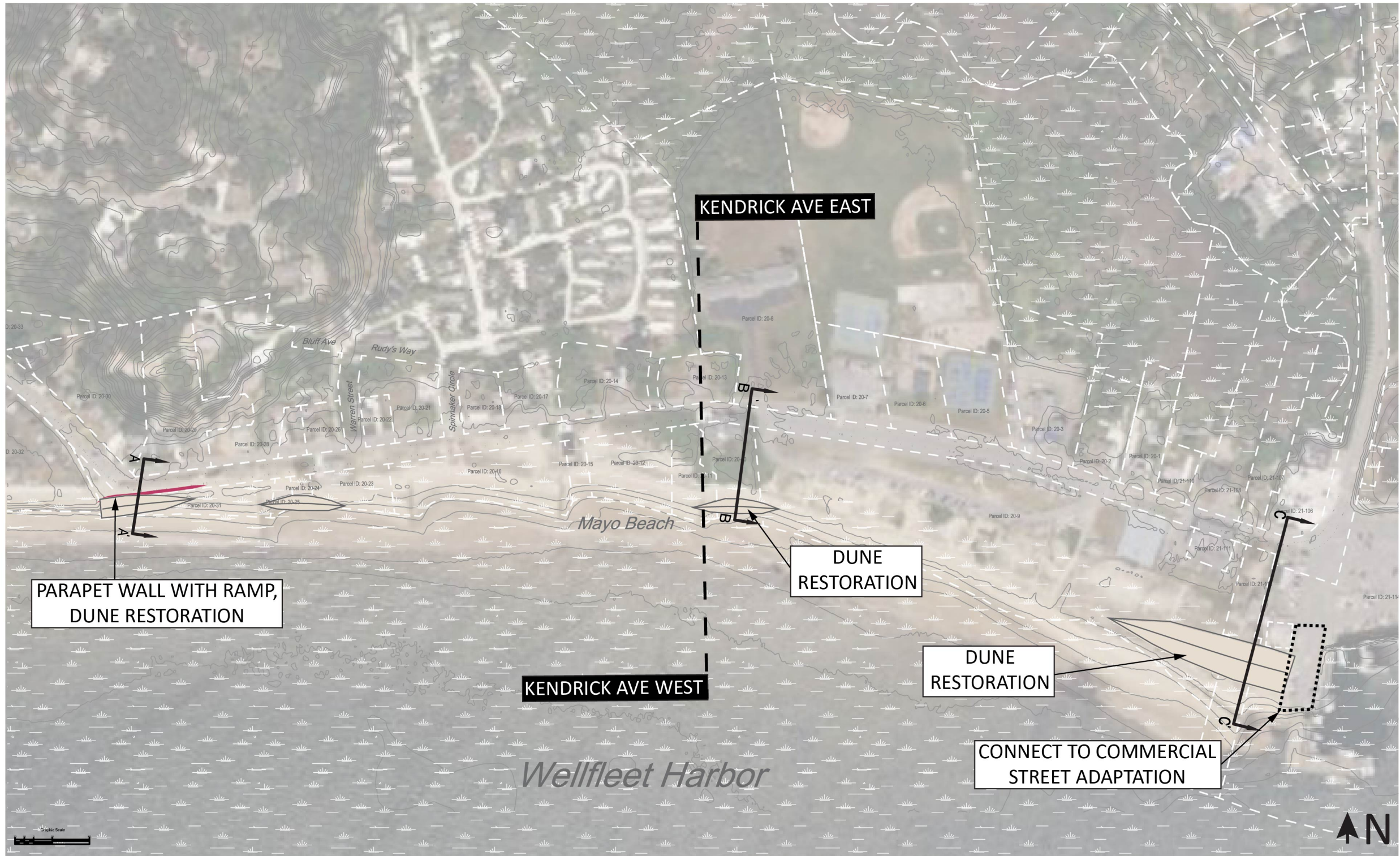


ALTERNATIVE 1: GRAY

Kendrick Avenue, Wellfleet



ALTERNATIVE 1: GRAY
Kendrick Avenue, Wellfleet

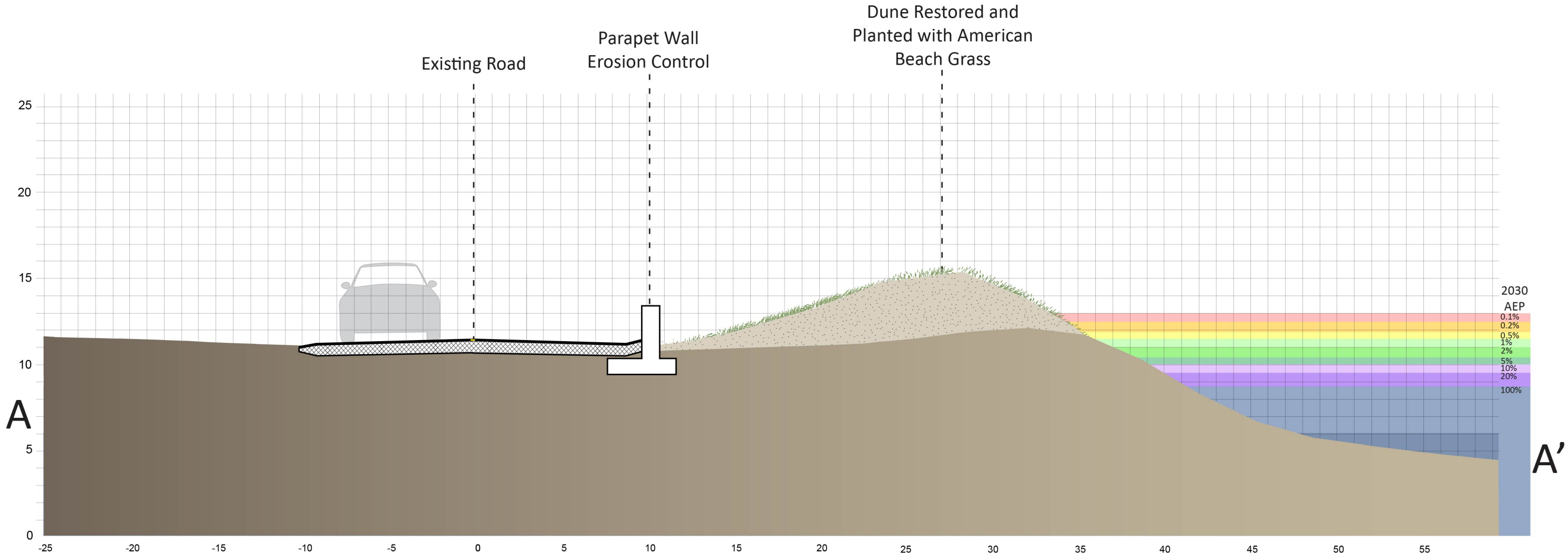


Kendrick Ave
WELLFLEET

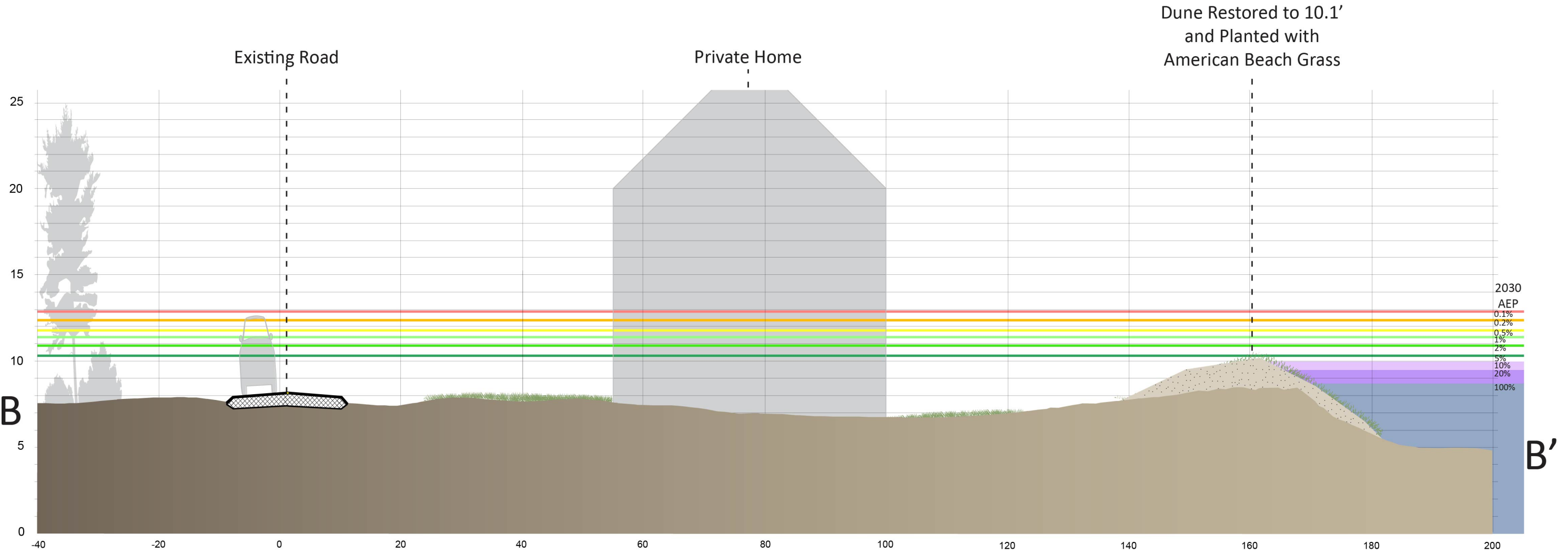
ALTERNATIVE 2: HYBRID

Targeted dune restorations and parapet walls bring the dune's elevation to 10.1ft. At the western curve of the road, a parapet wall prevents erosion. Connection to the alternative chosen for Commercial Street must be considered.

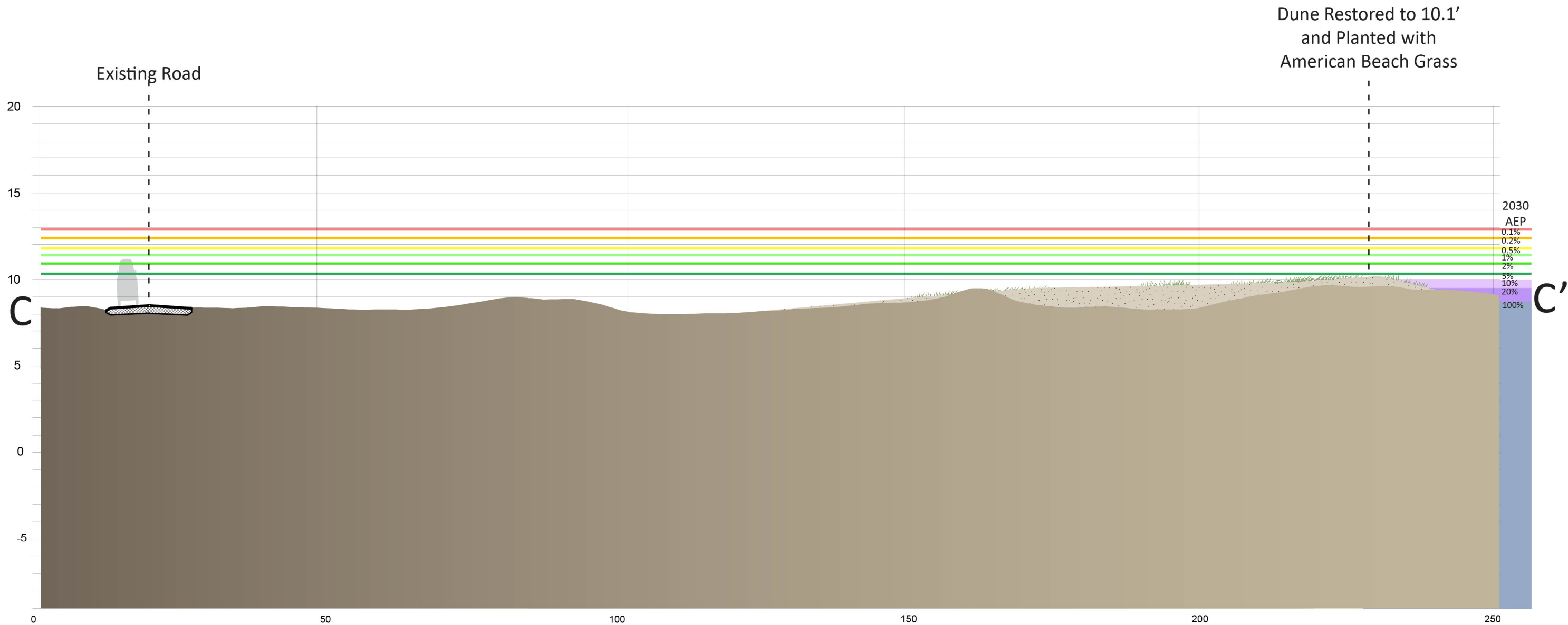
Note: Project overlap with wetland areas, rights of way and property lines is approximate and needs confirmation with a site survey



ALTERNATIVE 2: HYBRID
Kendrick Avenue, Wellfleet

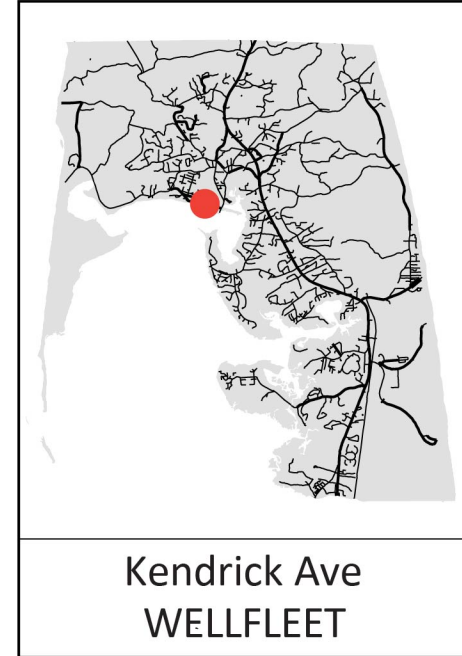
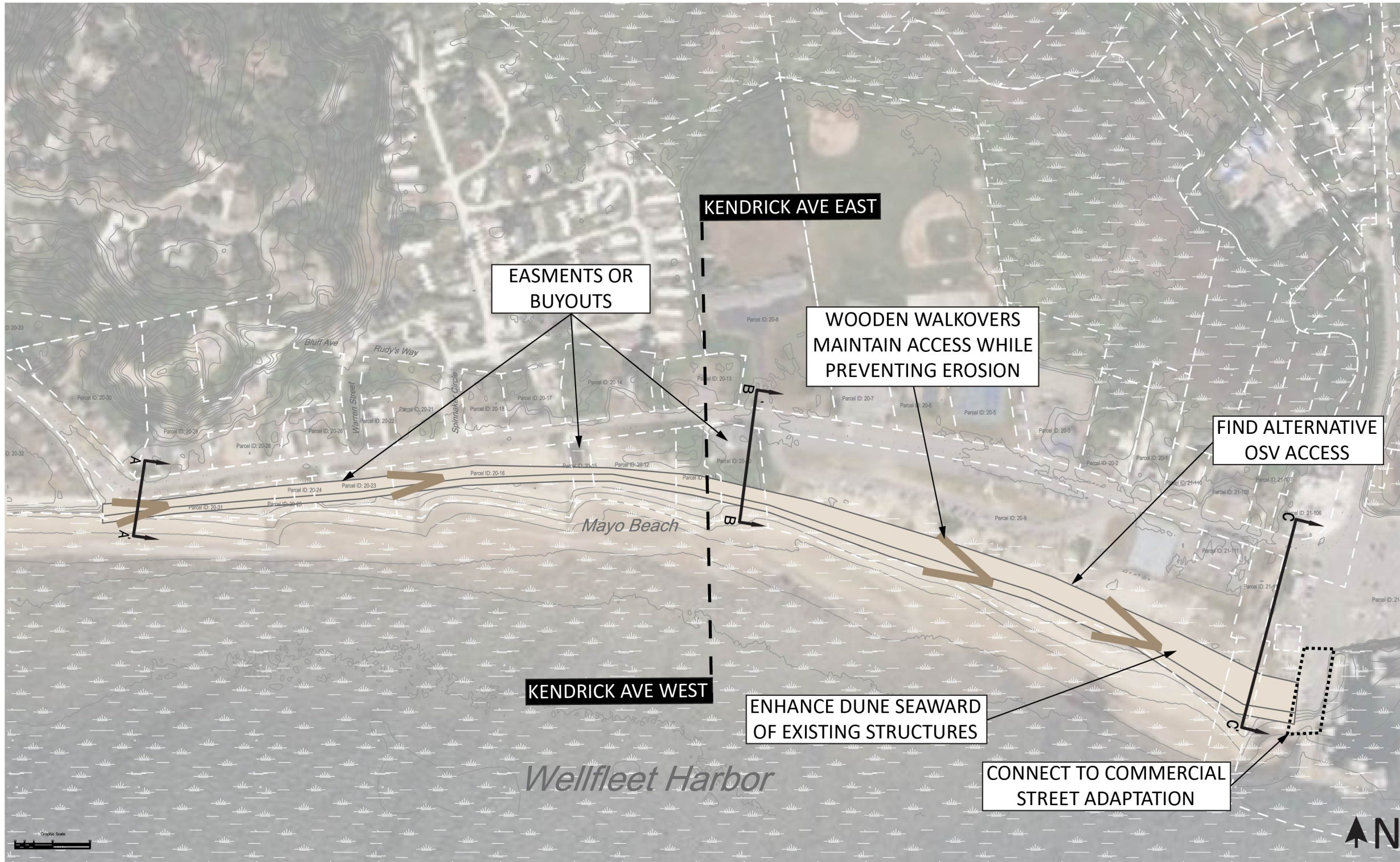


ALTERNATIVE 2: HYBRID
Kendrick Avenue, Wellfleet



ALTERNATIVE 2: HYBRID

Kendrick Avenue, Wellfleet

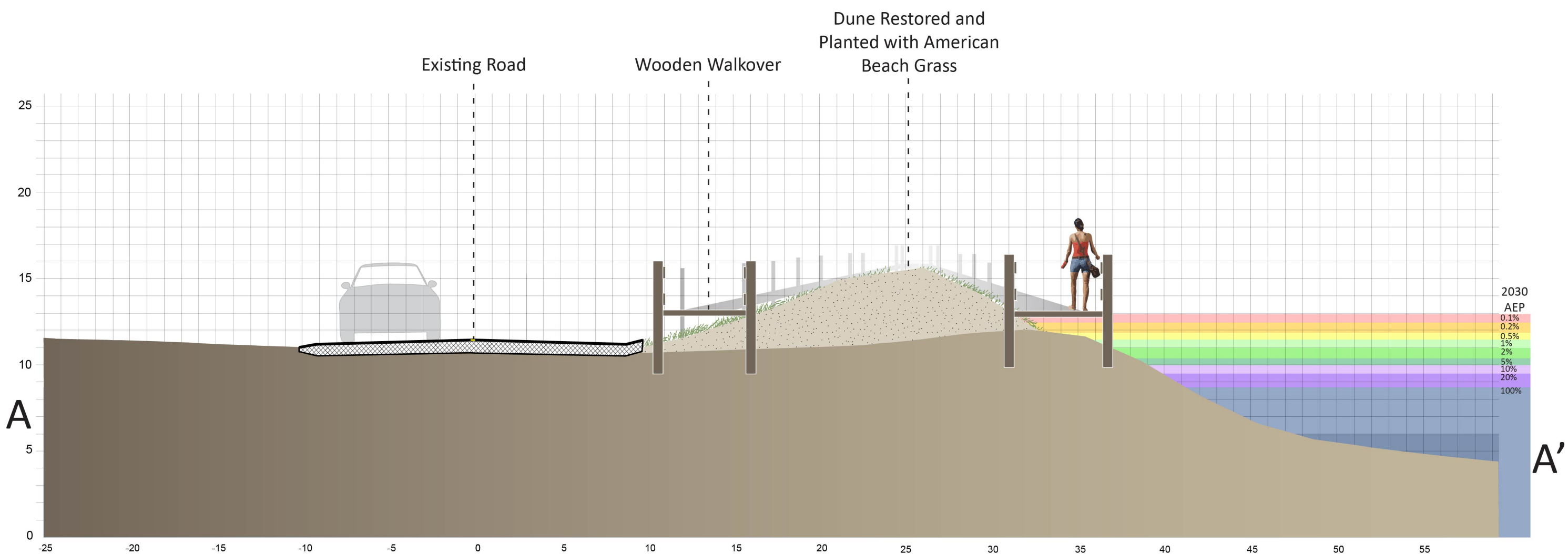


Kendrick Ave
WELLFLEET

ALTERNATIVE 3: GREEN

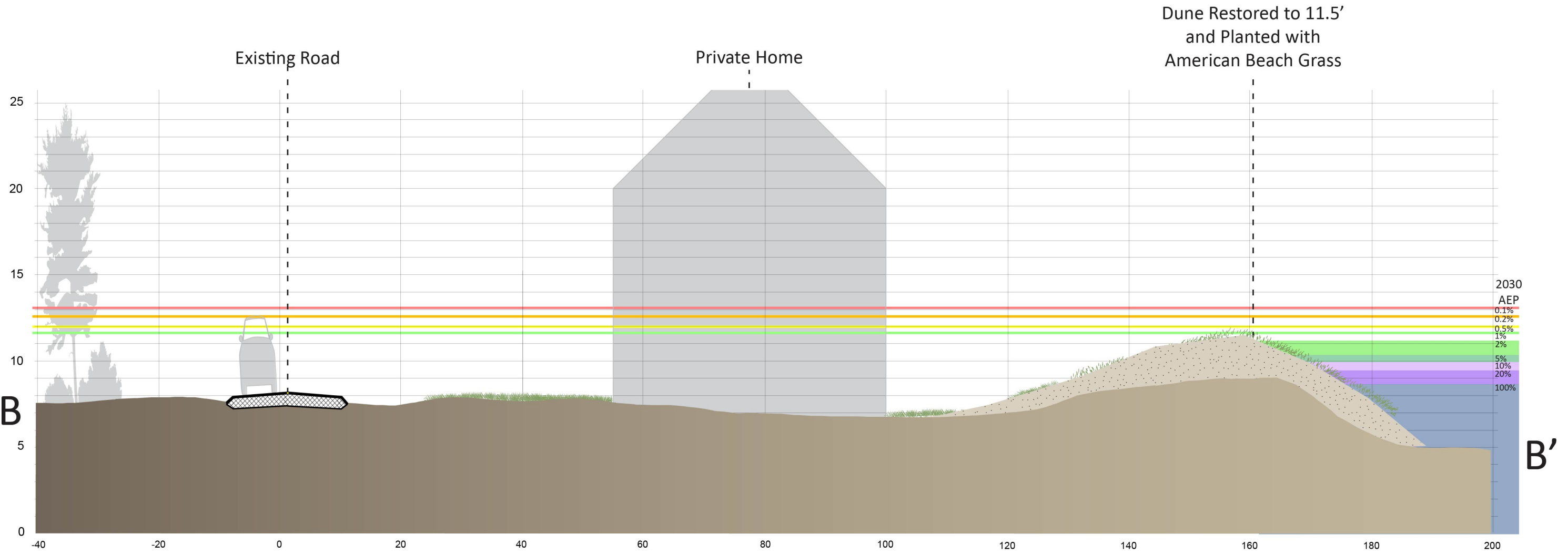
Private easements or buyouts allow the entire dune along Mayo Beach to be restored to 11.5ft. Some sections are already higher and would not require much work. Connection to the alternative chosen for Commercial Street must be considered.

Note: Project overlap with wetland areas, rights of way and property lines is approximate and needs confirmation with a site survey

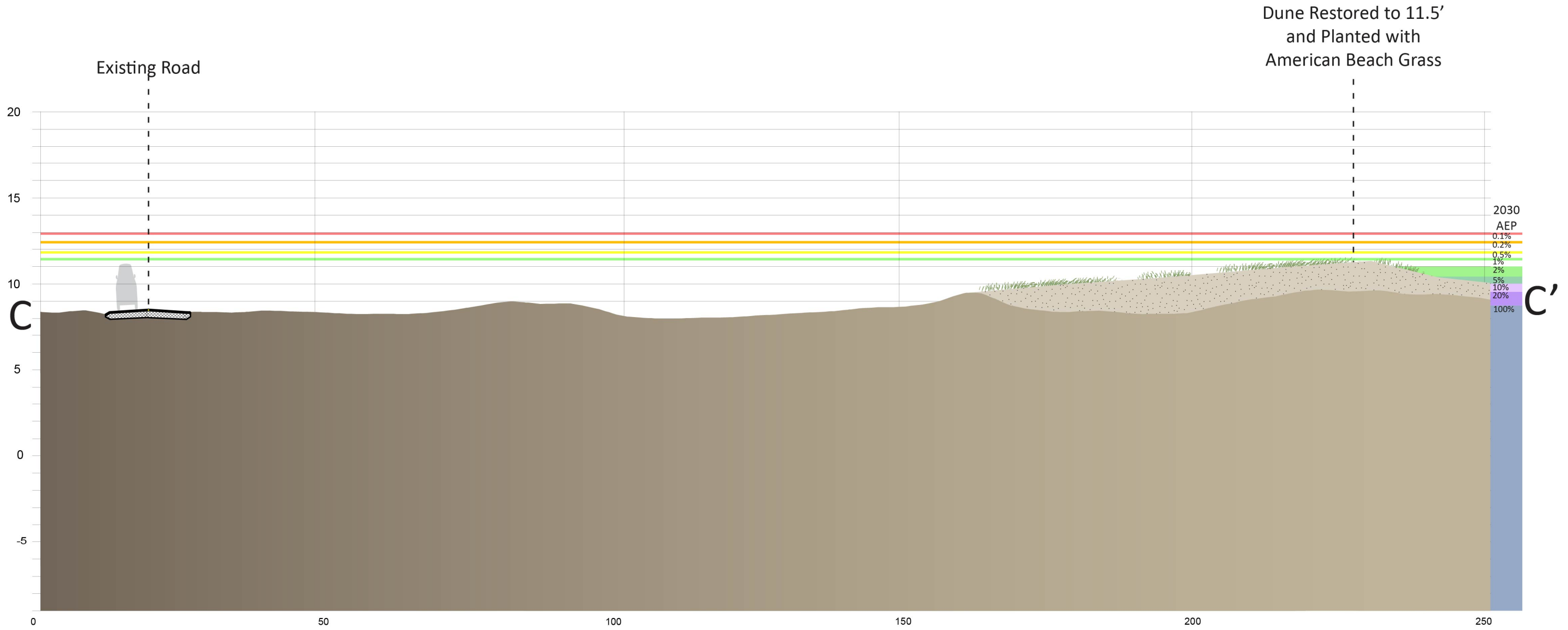


ALTERNATIVE 3: GREEN

Kendrick Avenue, Wellfleet



ALTERNATIVE 3: GREEN
Kendrick Avenue, Wellfleet



ALTERNATIVE 3: GREEN
Kendrick Avenue, Wellfleet

KENDRICK AVENUE, WELLFLEET

Summary of alternatives

	Segment	Description	Critical Elevation	Annual Exceedance Probability			Vulnerable to Tidal Flooding	Impacts to Resource Area(s)	Impacts to Private Property	Estimated Cost*
				2030	2050	2070				
EXISTING	EAST	A segment of 23ft wide road.	7.6 feet	100%	100%	100%	2070	N/A	N/A	N/A
	WEST	A segment of 23ft wide road.	8.0 feet	100%	100%	100%	2070			
ALTERNATIVE 1: GRAY	EAST	2830 linear feet of road are elevated from a lowest point of 7.6 feet to 10.3 feet. Parapet wall and dune restoration are used to control erosion at the western corner. Connection to work on Commercial Street must be considered.	10.3 feet	5%	100%	100%	N/A	N/A	Yes	\$635,000
	WEST		10.3 feet	5%	100%	100%	N/A	Possible Negative	Yes	\$680,000
ALTERNATIVE 2: HYBRID	EAST	Targeted dune restorations bring the dune's lowest elevation to 10.1ft. At the western curve of the road, a parapet wall prevents road erosion. Connection to work on Commercial Street must be considered.	10.1 feet	5%	100%	100%	N/A	Possible Positive	Yes	\$58,000
	WEST		10.1 feet	5%	100%	100%	N/A	Possible Positive	Yes	\$103,000
ALTERNATIVE 3: GREEN	EAST	Easements allow the dune along Mayo Beach to be restored to 11.5ft. Walkovers prevent further erosion.	11.5 feet	1%	10%	100%	N/A	Possible Positive	Yes	\$344,000 + cost of buyouts or easements
	WEST	Buyouts or easements allow the dune along Mayo Beach to be restored to 11.5ft. Walkovers prevent erosion.	11.5 feet	1%	10%	100%	N/A	Possible Positive	Yes	\$344,000 + cost of buyouts or easements

*2023 installed material cost +40% escalation (through 2029) and 15% contingency. Excludes design, permitting, mobilization, stormwater and wastewater infrastructure, and site controls. Costs based on experienced contractor opinion and MassDOT costing data.