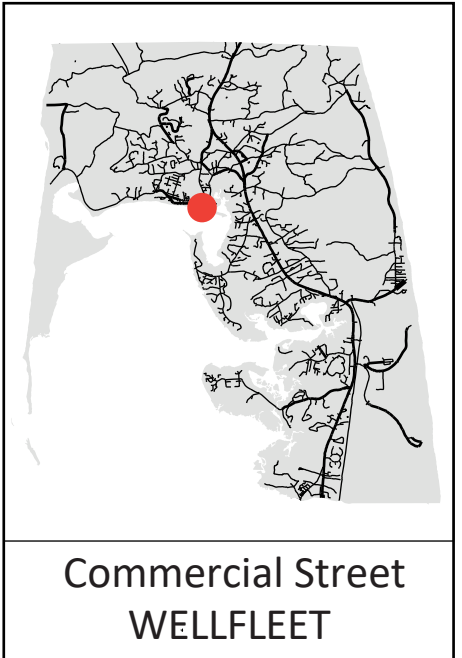
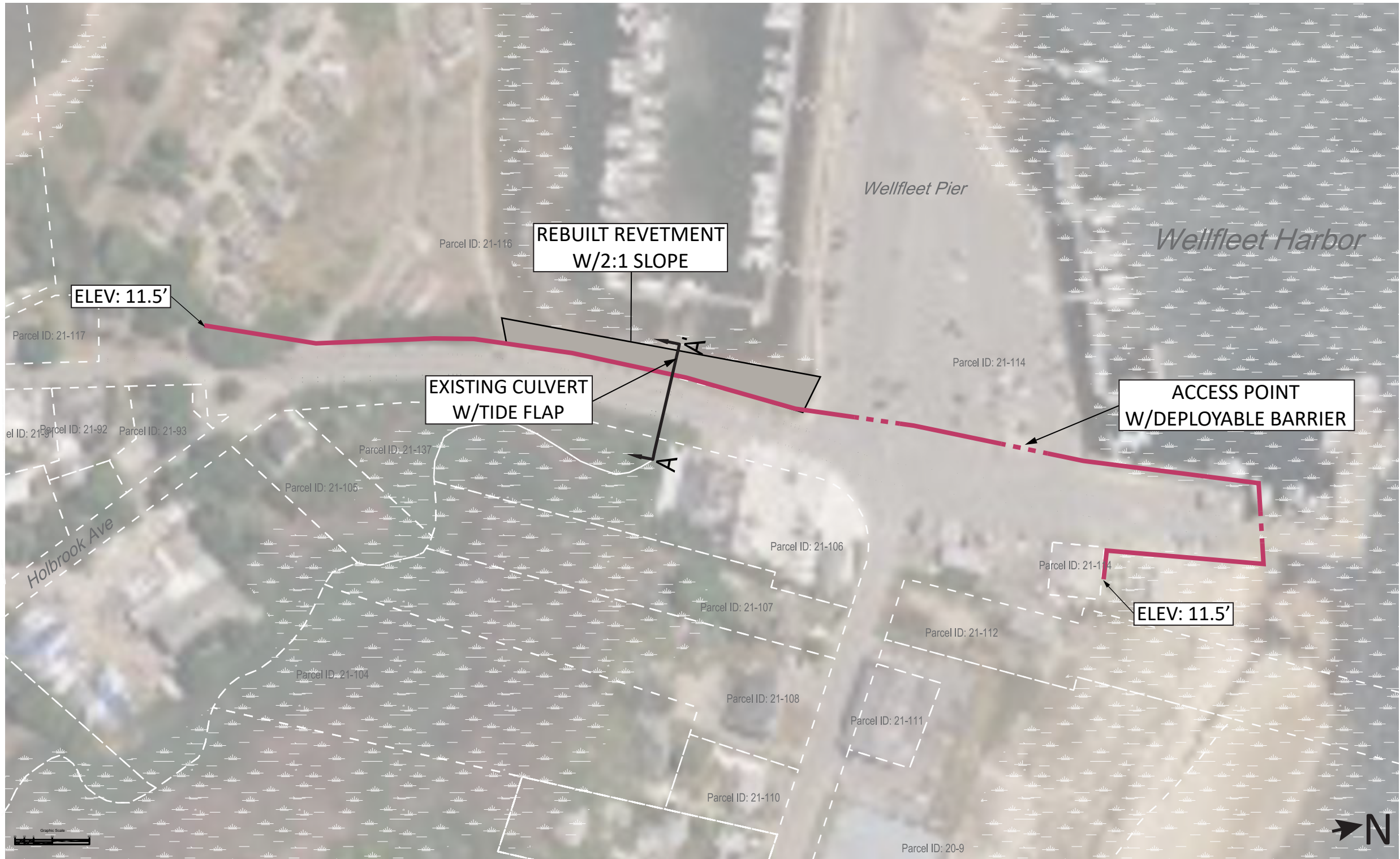


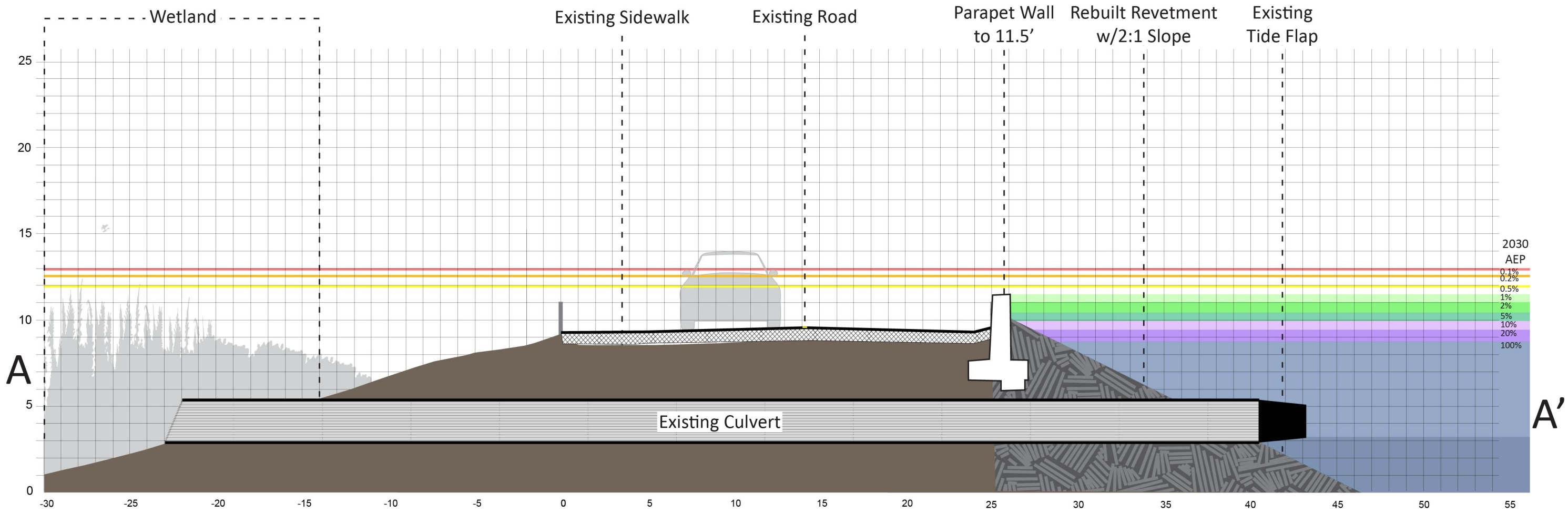
EXISTING CONDITIONS
 Commercial Street, Wellfleet



ALTERNATIVE 1: GRAY

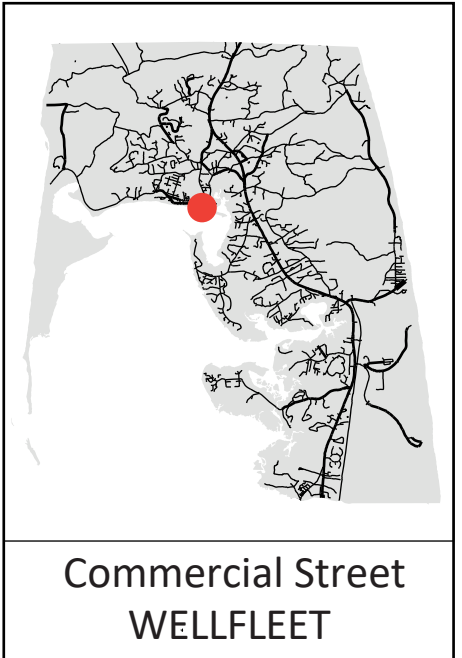
A parapet wall to 11.5 feet and a rebuilt revetment along the Mayo Creek crossing tie in to a high point near Mac's on the Pier. Sliding gates or deployable barriers are necessary at the parking lot and dock to allow for entry and exit. Connections to the alternative selected for Kendrick Avenue must be considered.

Note: Project overlap with wetland areas, rights of way and property lines is approximate and needs confirmation with a site survey



ALTERNATIVE 1: GRAY

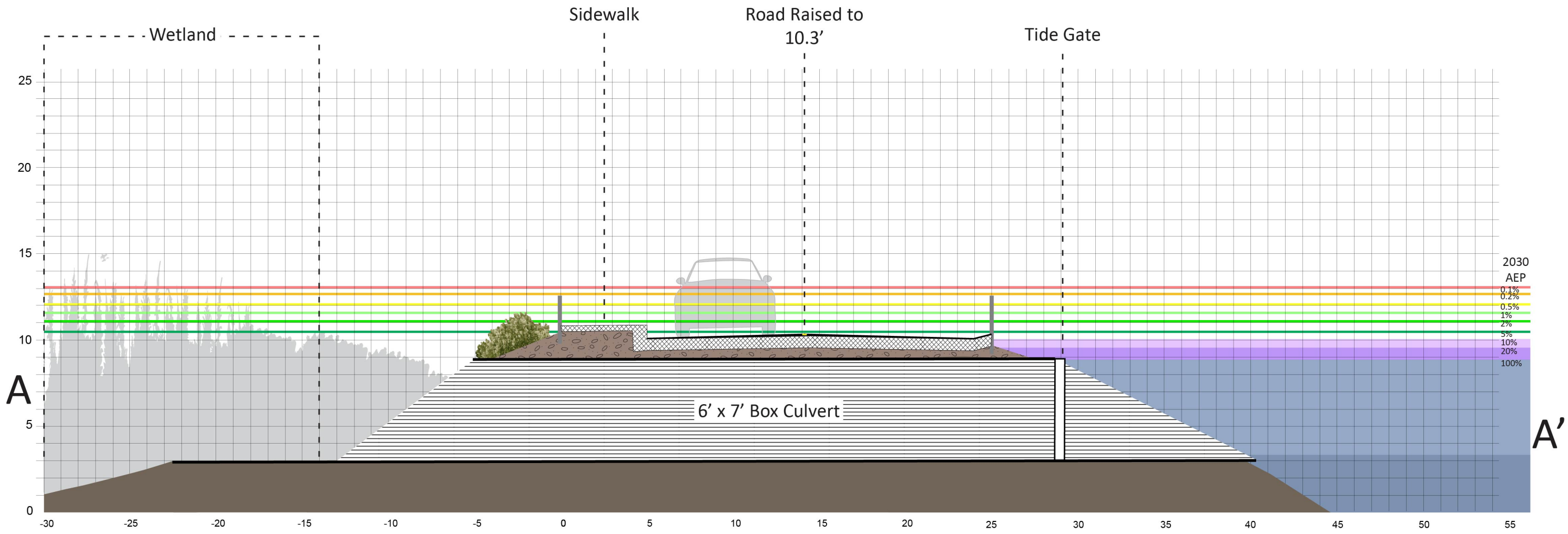
Commercial Street, Wellfleet



ALTERNATIVE 2: HYBRID

1079 linear feet of road are elevated to 10.3 feet with 3:1 side slopes. A 6' x 7' box culvert and operable tide gate are installed at the crossing of Mayo Creek, consistent with recommendations from an existing project. Connections to the alternative selected for Kendrick Avenue must be considered.

Note: Project overlap with wetland areas, rights of way and property lines is approximate and needs confirmation with a site survey



ALTERNATIVE 2: HYBRID

Commercial Street, Wellfleet

COMMERCIAL STREET, WELLFLEET

Summary of alternatives

| | Description | Critical Elevation | Annual Exceedance Probability | | | Vulnerable to Tidal Flooding | Impacts to Resource Area(s) | Impacts to Private Property | Estimated Cost* |
|------------------------------|--|--------------------|-------------------------------|------|------|------------------------------|-----------------------------|-----------------------------|-----------------|
| | | | 2030 | 2050 | 2070 | | | | |
| EXISTING | A segment of 20 foot wide road with a creek crossing and culvert. | 8.2 feet | 100% | 100% | 100% | 2070 | N/A | N/A | N/A |
| ALTERNATIVE 1: GRAY | A parapet wall to 11.5 feet and a rebuilt revetment along the Mayo Creek crossing tie in to a high point near Mac's on the Pier. Sliding gates or deployable barriers are necessary at the parking lot and dock to allow for entry and exit. Connections to the alternative selected for Kendrick Avenue must be considered. | 11.5 feet | 1% | 10% | 100% | N/A | Negative | Yes | \$1,340,000 |
| ALTERNATIVE 2: HYBRID | 1079 linear feet of road are elevated to 10.3 feet with 3:1 side slopes. A 6' x 7' box culvert and operable tide gate are installed at the Mayo Creek crossing, consistent with recommendations from an existing project. Connections to the alternative selected for Kendrick Avenue must be considered. | 10.3 feet | 5% | 100% | 100% | N/A | Possible Positive | Yes | \$959,000 |

*2023 installed material cost +40% escalation (through 2029) and 15% contingency. Excludes design, permitting, mobilization, stormwater and wastewater infrastructure, and site controls. Costs based on experienced contractor opinion and MassDOT costing data.