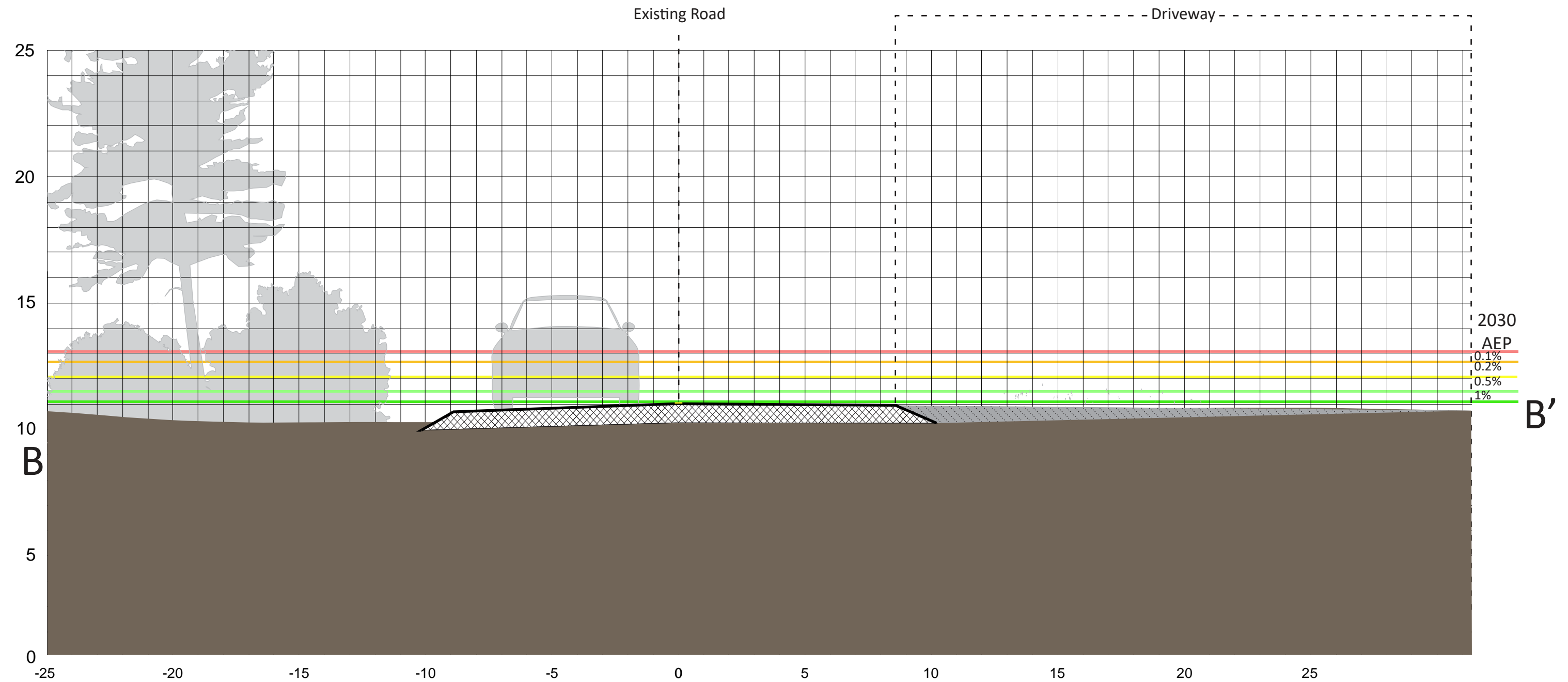
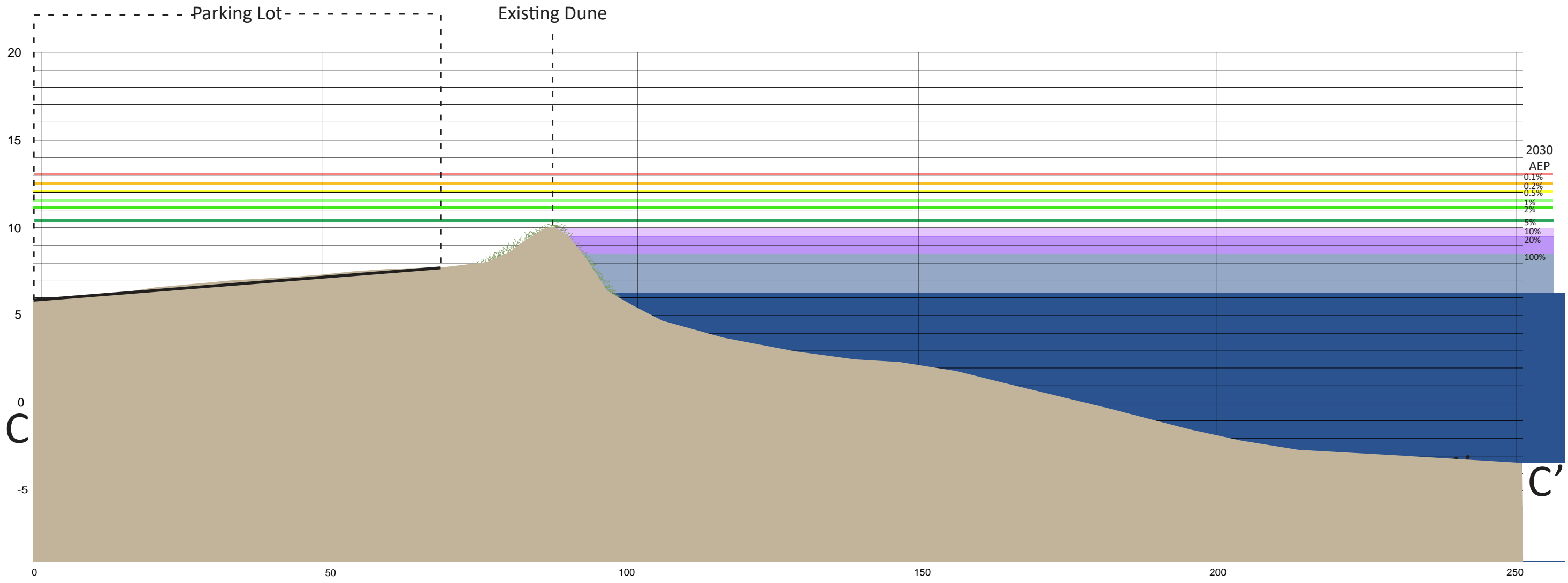


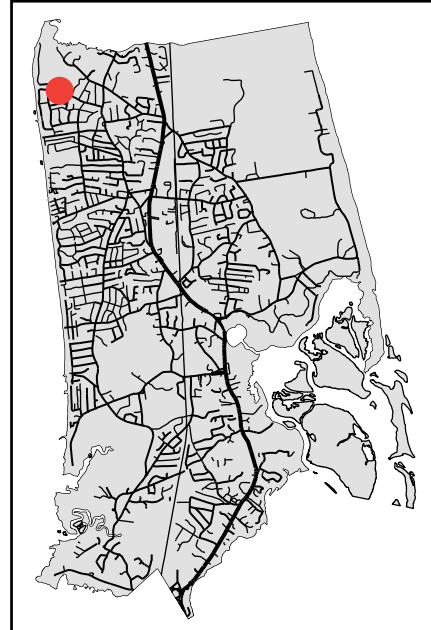
**EXISTING CONDITIONS**  
 South Sunken Meadow Road, Eastham



**EXISTING CONDITIONS**  
 South Sunken Meadow Road, Eastham



**EXISTING CONDITIONS**  
 South Sunken Meadow Road, Eastham



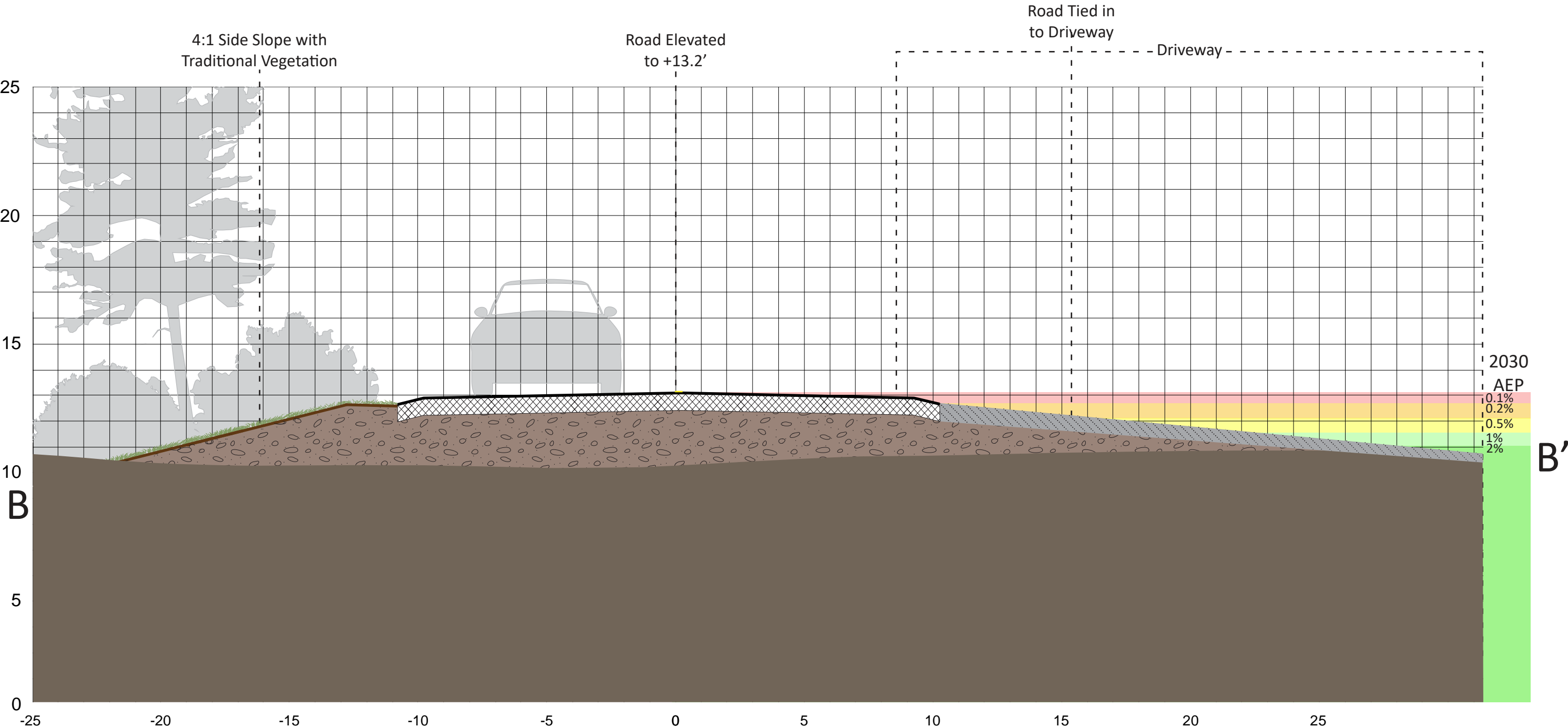
South Sunken Meadow Road  
EASTHAM

ALTERNATIVE 1: GRAY

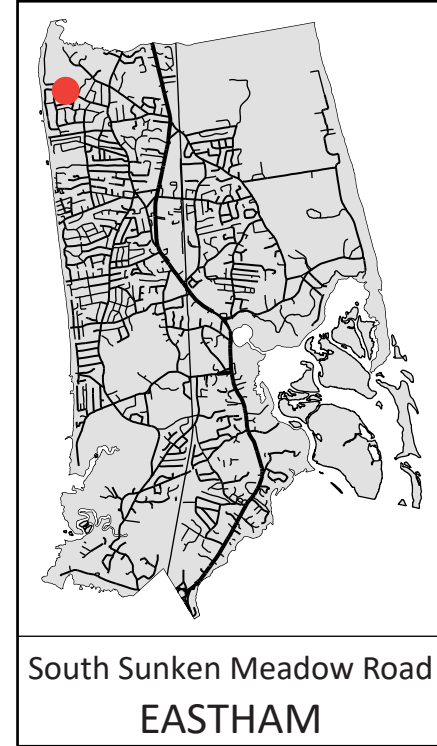
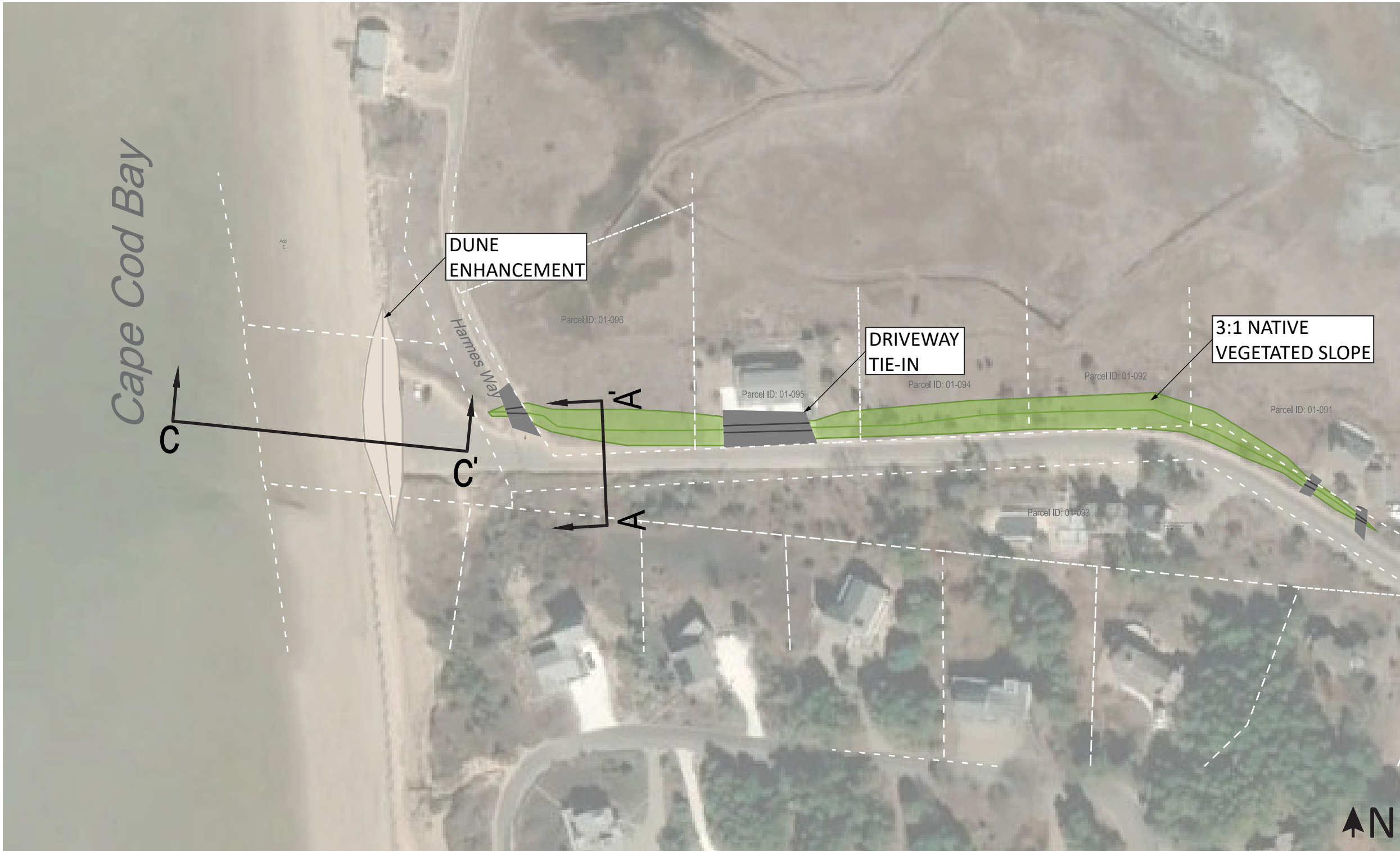
1721 linear feet of Town-owned road are elevated from a lowest point of 6.3 feet to a lowest point of 9 feet with a 4:1 traditionally vegetated side slope. Driveway tie-ins in the eastern part of the road are necessary.

Note: Project overlap with wetland areas, rights of way and property lines is approximate and needs confirmation with a site survey





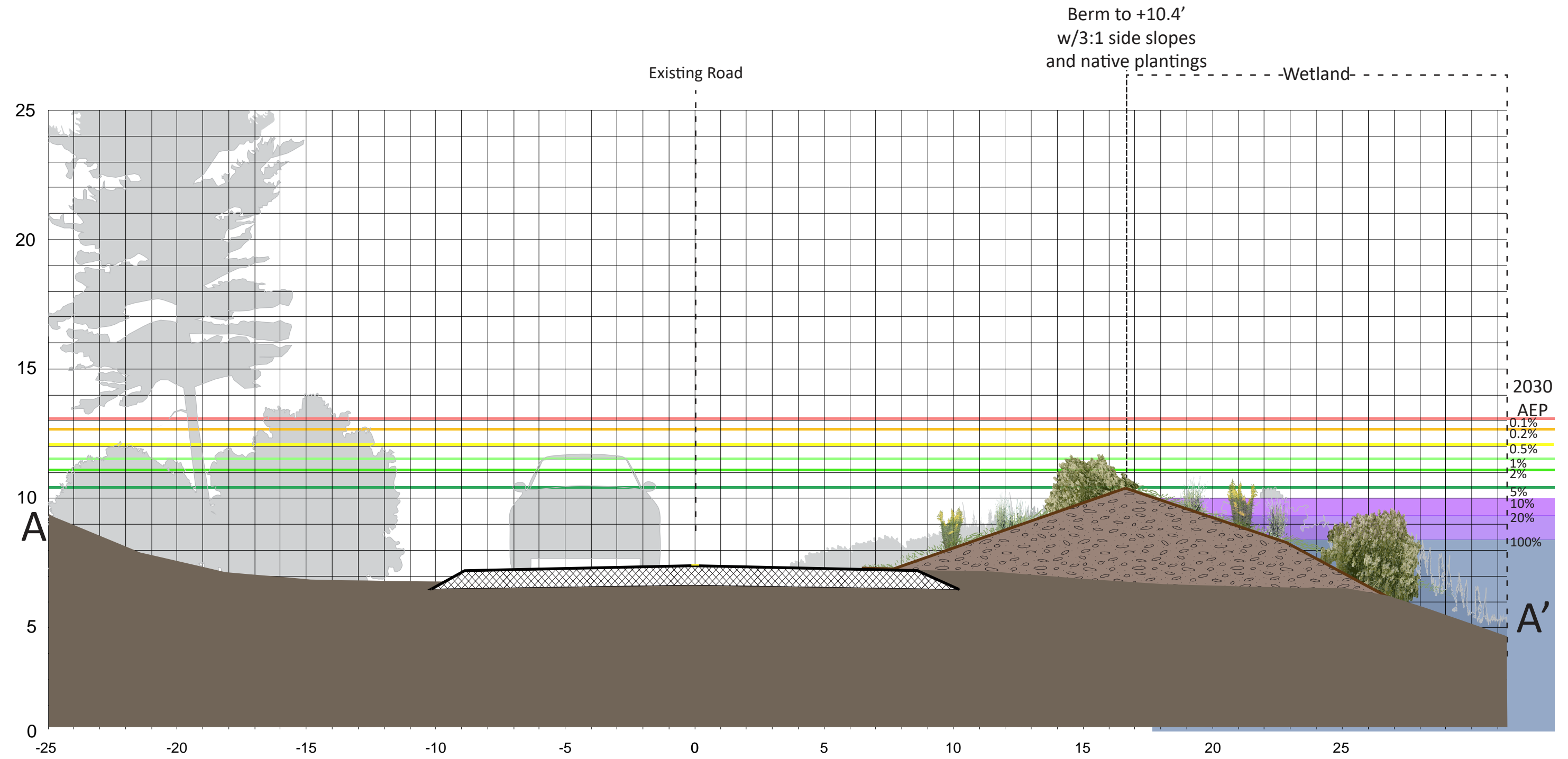
**ALTERNATIVE 1:GRAY**  
 South Sunken Meadow Road, Eastham



**ALTERNATIVE 2: HYBRID**

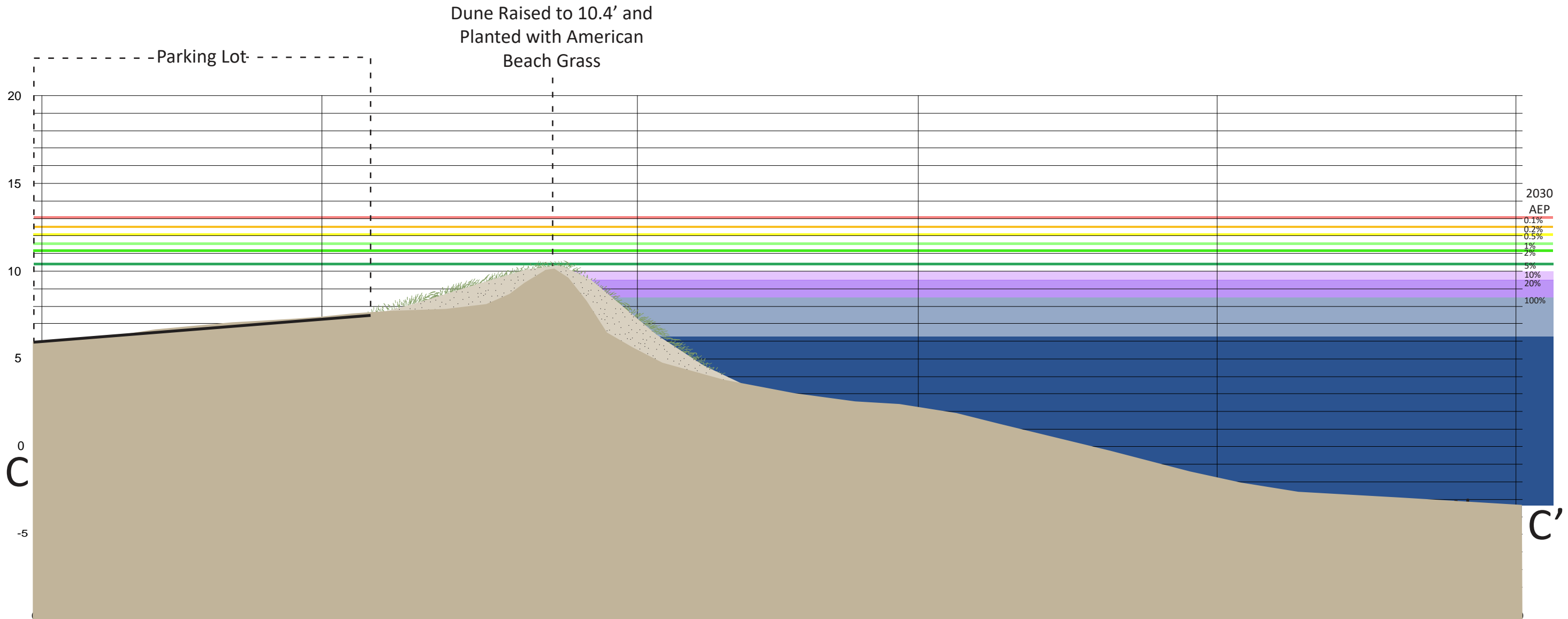
A berm to 10.4 feet with a 3:1 side slope planted with native vegetation is added on the northern side of the road. The dune is also enhanced to an elevation of 10.4 feet, and one row of parking spaces is eliminated. Driveway tie-ins at the eastern end of the berm are necessary.

Note: Project overlap with wetland areas, rights of way and property lines is approximate and needs confirmation with a site survey



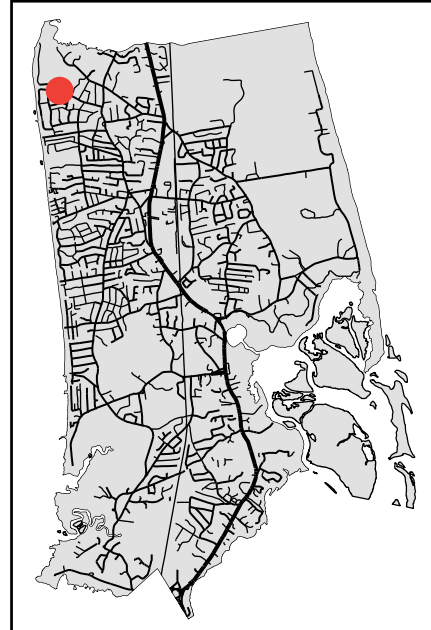
**ALTERNATIVE 2: HYBRID**  
 South Sunken Meadow Road, Eastham





## ALTERNATIVE 2: HYBRID

South Sunken Meadow Road, Eastham



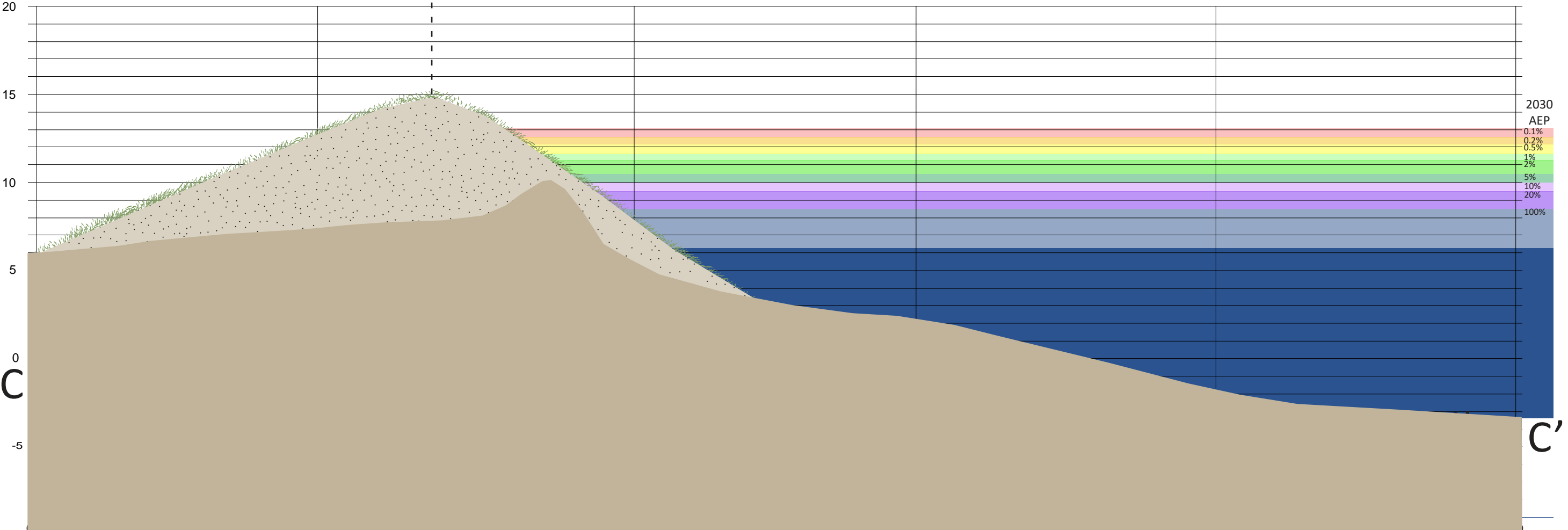
South Sunken Meadow Road  
**EASTHAM**

**ALTERNATIVE 3: GREEN**

The beach parking lot is eliminated, and the dune is restored to 14.8 feet. Alternative parking locations would need to be explored.

Note: Project overlap with wetland areas, rights of way and property lines is approximate and needs confirmation with a site survey

Dune Raised to 14.8' and  
Planted with American  
Beach Grass



**ALTERNATIVE 3: GREEN**  
South Sunken Meadow Road, Eastham

# SOUTH SUNKEN MEADOW ROAD, EASTHAM

## Summary of alternatives

	Description	Critical Elevation	Annual Exceedance Probability			Vulnerable to Tidal Flooding	Impacts to Wetlands	Impacts to Private Property	Estimated Cost*
			2030	2050	2070				
<b>EXISTING</b>	A 20ft wide road adjacent to a marsh that ends in a beach parking lot.	6.3 feet	100%	100%	100%	2050	N/A	N/A	N/A
<b>ALTERNATIVE 1: GRAY</b>	1721 linear feet of Town-owned road are elevated from a lowest point of 6.3 feet to a lowest point of 9 feet with a 4:1 traditionally vegetated side slope. Driveway tie-ins in the eastern part of the road are necessary.	9.0 feet	20%	100%	100%	2070	Negative	Yes	\$529,000
<b>ALTERNATIVE 2: HYBRID</b>	A berm to 10.4 feet with a 3:1 side slope planted with native vegetation is added on the northern side of the road. The dune is also enhanced to an elevation of 10.4 feet, and one row of parking spaces is eliminated. Driveway tie-ins at the eastern end of the berm are necessary.	10.4 feet	5%	20%	100%	N/A	Possible Negative	Yes	\$76,000
<b>ALTERNATIVE 3: GREEN</b>	The beach parking lot is eliminated, and the dune is restored to 14.8 feet. Alternative parking locations would need to be explored.	14.8 feet	0%	0.2%	1%	N/A	None	No	\$138,000

\*Installed material cost +20% contingency. Excludes design, permitting, mobilization, stormwater and wastewater infrastructure, and site controls. Costs based on RSMMeans 2021 cost book and adjusted for inflation and region.