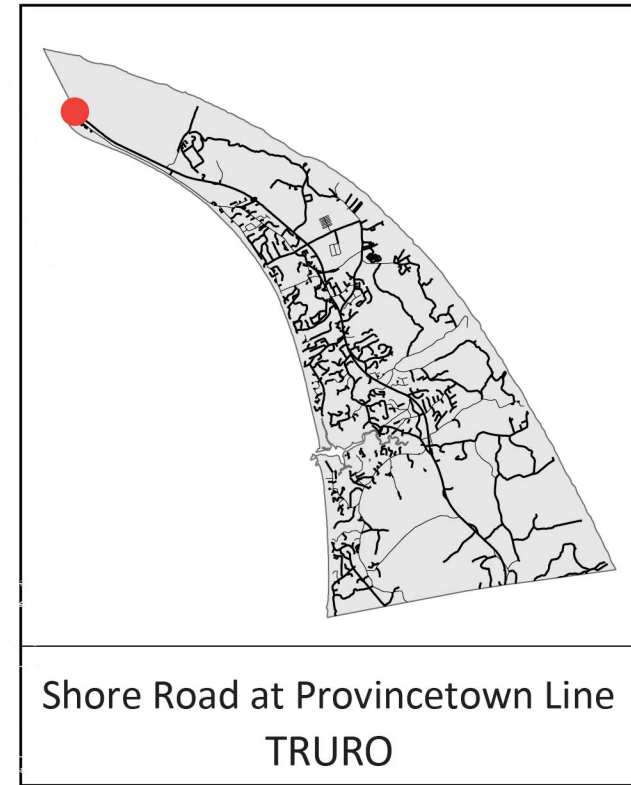


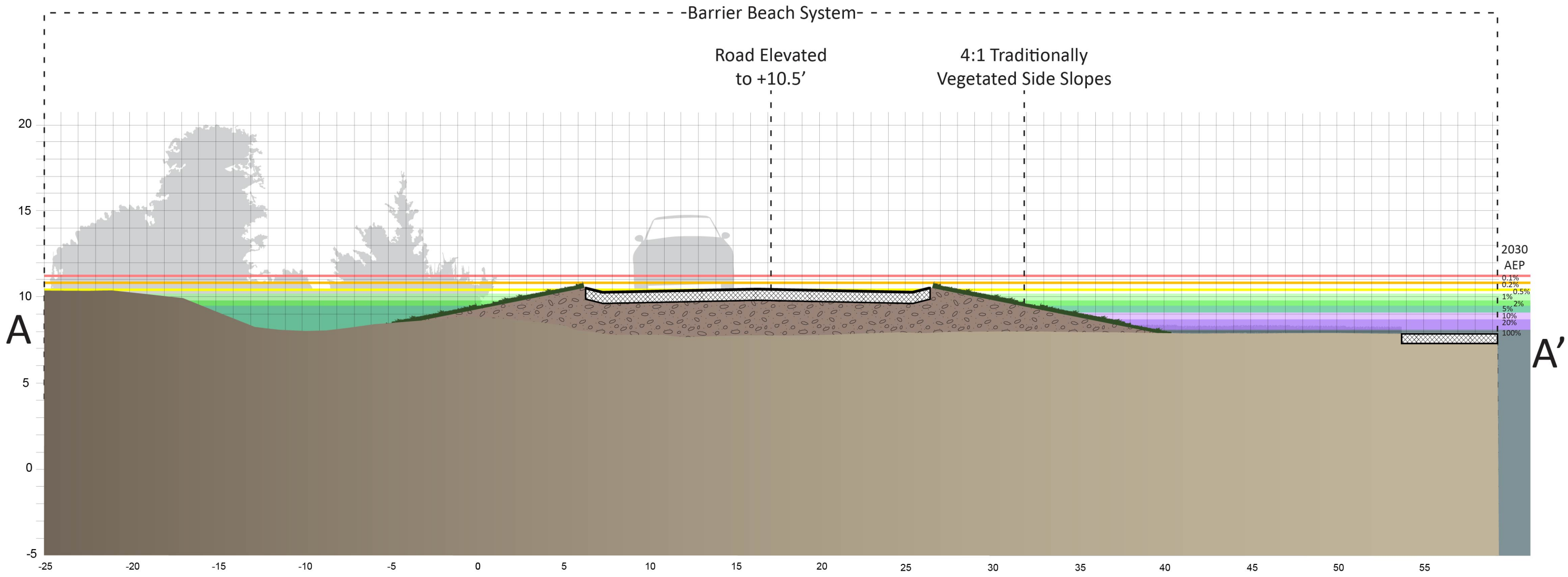
EXISTING CONDITIONS
 Shore Road at Provincetown Line, Truro



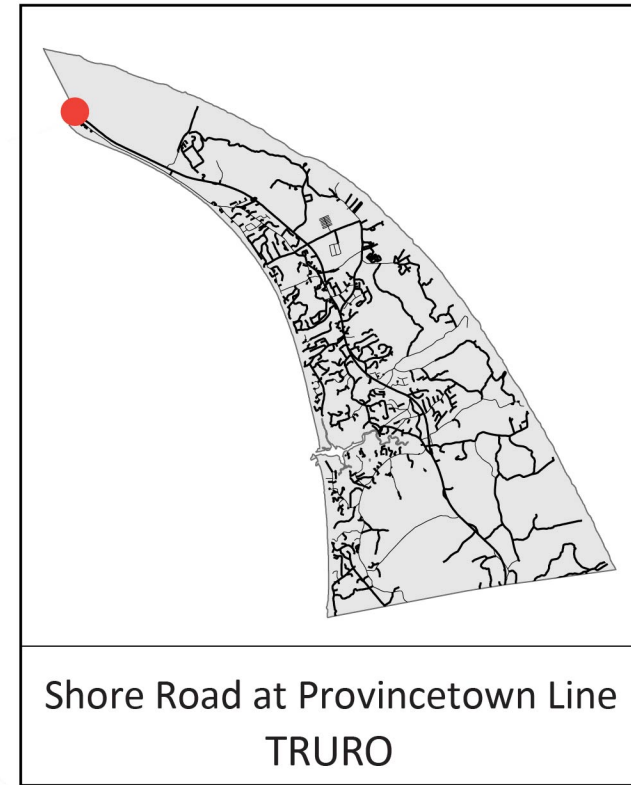
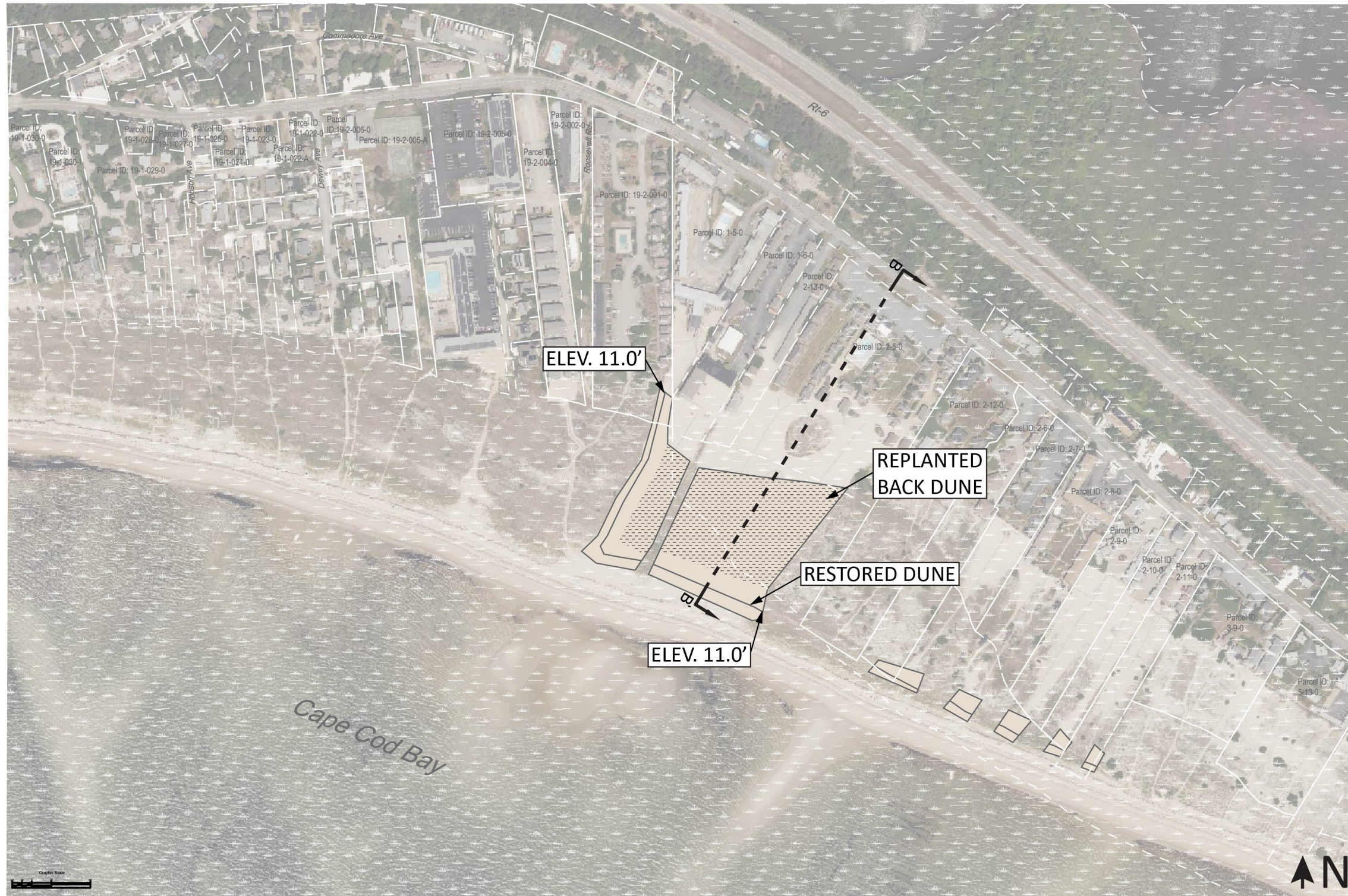
ALTERNATIVE 1: GRAY

2378 linear feet of town-owned road are raised from a lowest point of 7.6 feet to a lowest point of 10.5 feet using traditionally vegetated 4:1 side slopes. This alternative extends into Provincetown, and collaboration would be necessary.

Note: Project overlap with wetland areas, rights of way and property lines is approximate and needs confirmation with a site survey



ALTERNATIVE 1: GRAY
Shore Road at Provincetown Line, Truro

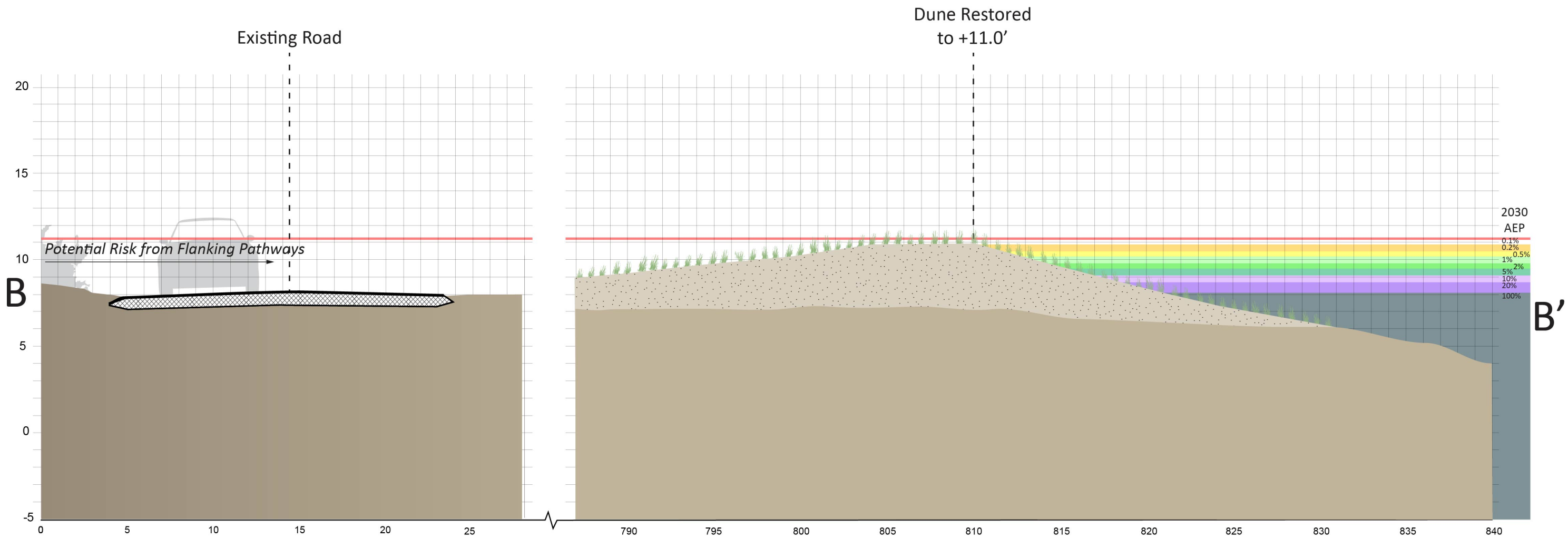


Shore Road at Provincetown Line
TRURO

ALTERNATIVE 2: GREEN

A wide dune to 11.0 feet is restored on Parcels 2-5-0, 2-13-0, and 1-6-0. Other breaches in the dune are patched. This alternative could be phased and possibly extended eastward in the future. Dune walkovers or mobimats can be used to preserve beach access. This approach may need to consider potential flanking from East Harbor.

Note: Project overlap with wetland areas, rights of way and property lines is approximate and needs confirmation with a site survey



ALTERNATIVE 2: GREEN

Shore Road at Provincetown Line, Truro

SHORE ROAD at PROVINCETOWN LINE

Summary of alternatives

	Description	Critical Elevation	Annual Exceedance Probability			Vulnerable to Tidal Flooding	Impacts to Resource Area(s)	Impacts to Private Property	Estimated Cost*
			2030	2050	2070				
EXISTING	A road intersection with a culvert crossing and adjacent wetland.	7.6 feet	100%	100%	100%	2070	N/A	N/A	N/A
ALTERNATIVE 1: GRAY	2378 linear feet of town-owned road are raised from a lowest point of 7.6 feet to a lowest point of 10.5 feet using traditionally vegetated 4:1 side slopes. This alternative extends into Provincetown, and collaboration would be necessary.	10.5 feet	0.5%	10%	100%	N/A	Minimal	Minimal	\$1,046,000
ALTERNATIVE 2: GREEN	A wide dune to 11.0 feet is restored on Parcels 2-5-0, 2-13-0, and 1-6-0. Other breaches in the dune are patched. This alternative could be phased and possibly extended eastward in the future. Dune walkovers or mobimats can be used to preserve beach access. This approach may need to consider potential flanking from East Harbor.	11.0 feet	0.1%	5%	100%	N/A	Yes	Yes	\$3,228,000 (excluding easements)

*2023 installed material cost +40% escalation (through 2029) and 15% contingency. Excludes design, permitting, mobilization, stormwater and wastewater infrastructure, and site controls. Costs based on experienced contractor opinion and MassDOT costing data.