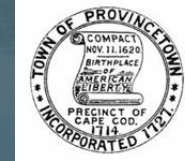


Outer Cape Bicycle & Pedestrian Master Plan



CAPE COD
COMMISSION

PUBLIC WORKSHOP #1
OCTOBER 30, 2014



TODAY'S DISCUSSION

- ❖ Introductions
- ❖ Town Updates from Steering Committee

PRESENTATION:

...

- ❖ Project Background
- ❖ Summary of Previous Workshops
- ❖ What's Next

MAP EXERCISES:

- ❖ Exercise 1 – Routes/ways confirmation
- ❖ Exercise 2 – Hazards/Challenges
- ❖ Exercise 3 – Town priorities
- ❖ Group Reporting
- ❖ Next Steps



- Re-initiate the project
- Re-engage the public
- Confirm, refine, add to info from previous workshops
- Identify priorities, opportunities and issues

A photograph of a road with a guardrail, a utility pole, and a cemetery in the background. The road is paved and has a yellow line. The guardrail is made of metal and runs along the side of the road. A utility pole is in the foreground. In the background, there is a cemetery with several headstones. The sky is overcast.

Purpose of Today's Meeting

A photograph of a coastal road with a blue overlay containing the text "WHAT IS THE MASTER PLAN?". The road is paved and curves to the right. In the background, there are houses and utility poles. A road sign with the number 6 is visible on the right side of the road. The sky is overcast.

WHAT IS THE MASTER PLAN?

A comprehensive plan to provide bike/ped connections between Provincetown, Truro, and Wellfleet and to destinations within each town and in the National Seashore.

Guided by a
Steering
Committee of
Town reps,
staffed by CCC &
NPS

PUBLIC INPUT

Result: list of
bike/ped
projects in each
town to
implement



Provincetown



Truro



Wellfleet



National Park Service



CAPE COD
COMMISSION


PARTNERSHIP

PROJECT HISTORY

2011 - 2012

- Bike/ped committees formed
- NPS applies for bike/ped master plan grant.
- Two Public workshops
- Steering Committee formed
- 2013: NPS awarded grant.
- 2014 Funding secured/contracts signed.
- June: Outer Cape Bicycle and Pedestrian Master Plan officially underway!

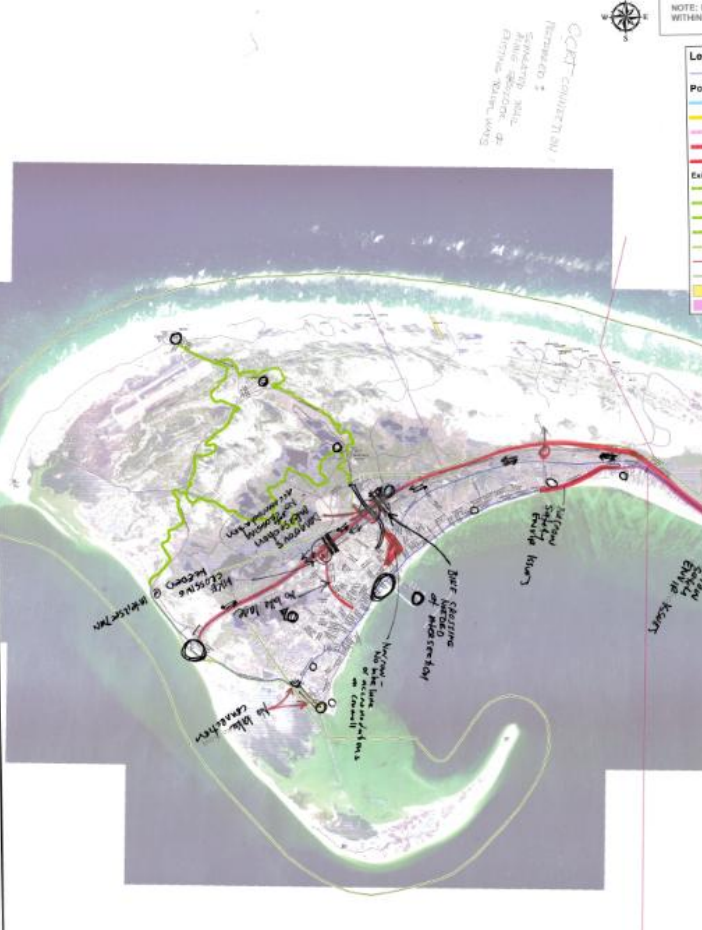


A photograph of a dirt path leading through dense green vegetation. On the right side of the path, there is a black sign with white text that reads "Pets Must Be On Leash". The path is sandy and leads into the distance, flanked by thick bushes and trees. The sky is overcast.

Pets Must
Be
On Leash

PREVIOUS WORKSHOP INPUT

Potential Bike Routes -- Provincetown



MAP EXERCISES



PUBLIC INPUT

A photograph of a paved road with double yellow lines, curving through a forest of bare trees. The sky is clear and blue. A semi-transparent blue rectangular box is overlaid on the lower half of the image, containing the text "Master Plan Goals" in white.

Master Plan Goals

Goal 1: Provide a safe & enjoyable Cape experience for residents & visitors alike with a system of connected bicycle & pedestrian facilities.

Goal 2: Improve bicycle & pedestrian connections throughout the Outer Cape, to the National Seashore, and to public transportation.

Goal 3: Minimize and/or mitigate adverse cultural & environmental impacts of proposed improvements while seeking ways to realize positive cultural and environmental enhancements.



Goal 4: Capitalize on opportunities to coordinate with planned and ongoing projects.

Goal 5: Seek opportunities to enhance adjacent areas.

Goal 6: Maximize use of existing and future assets and funds to create a bicycle and pedestrian network.



A photograph of a cyclist in a yellow jersey and black helmet riding a red bicycle on a paved path. The path has a yellow line down the center and a blue-painted section in the foreground. A person is visible in the distance on the path. The background is filled with green trees. A blue rectangular overlay covers the bottom half of the image, containing the text "PROCESS: WHERE ARE WE NOW?".

PROCESS: WHERE ARE WE
NOW?

3225 MAIN STREET • P.O. BOX 226
BARNSTABLE, MASSACHUSETTS 02630

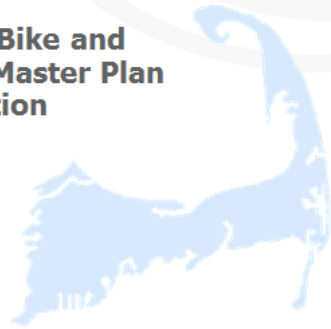
(508) 362-3828 • Fax (508) 362-3136 • www.capecodcommission.org



CAPE COD
COMMISSION

**Outer Cape Bike and
Pedestrian Master Plan
Data Collection**

7/22/2014



- ✓ ROAD CHARACTERISTICS
- ✓ TRAFFIC VOLUMES & SPEEDS
- ✓ CRASH DATA -
- ✓ BIKE/PED COUNTS & MORE

DATA COLLECTION

BIKE/PED CRASH DATA



Downtown Wellfleet

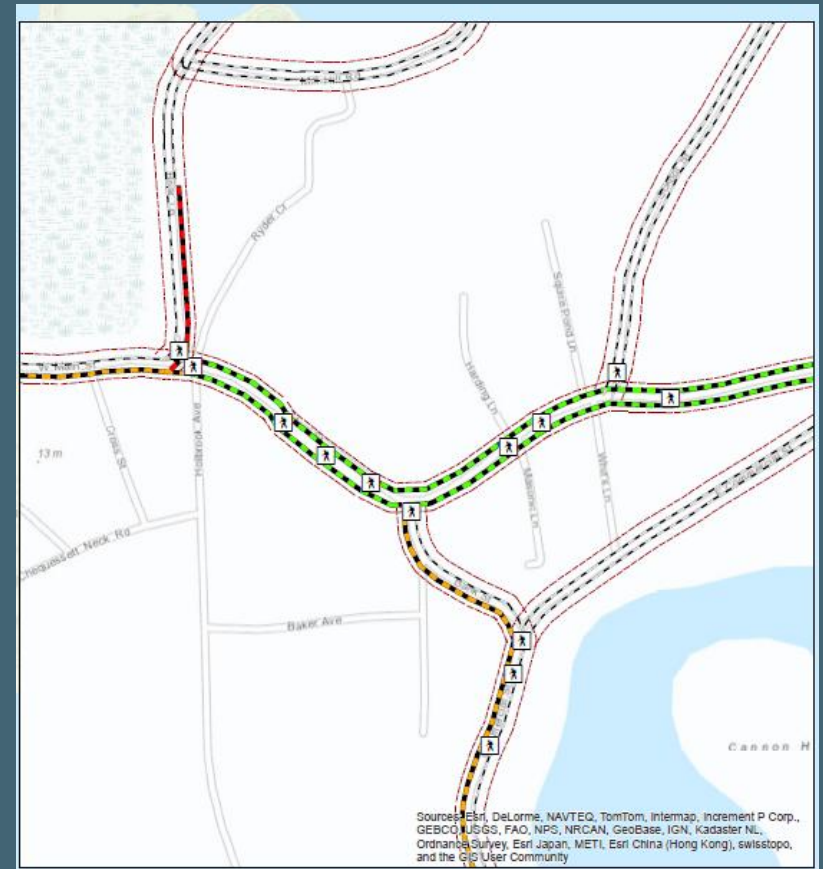


Truro Bicycle and Pedestrian Accommodation Inventory
Data collected September 2024

Charminger
Data only/No/None

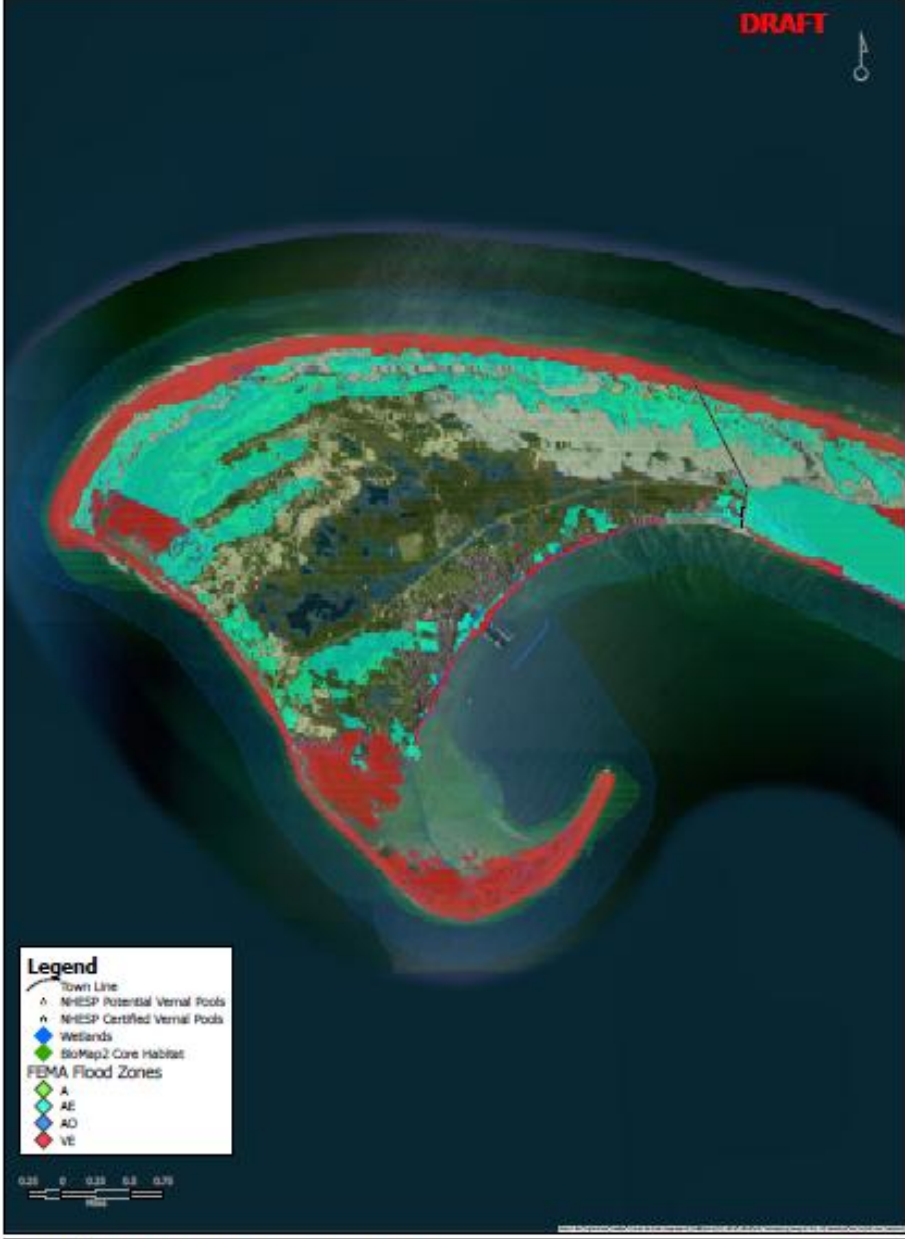


This information is provided as a planning tool only. It is not a substitute for legal boundary definitions, regulatory interpretation, or professional analysis. It should not be used for official or other purposes, or as a basis for any decision.



Sources: Esri, DeLorme, NAVTEQ, TomTom, Intermap, increment P Corp., GEBCO, USGS, FAO, NPS, NRCAN, GeoBase, IGN, Kadaster NL, Ordnance Survey, Esri Japan, METI, Esri China (Hong Kong), swisstopo, and the GIS User Community

DRAFT



Legend

- Town Line
- ▲ NHESP Potential Vernal Pools
- ▲ NHESP Certified Vernal Pools
- ◆ Wetlands
- ◆ BioMap2 Core Habitat
- FEMA Flood Zones
 - ◆ A
 - ◆ AE
 - ◆ AO
 - ◆ VE



Natural Resources Data Layers: Provincetown

September 2014

The information depicted on this map is for planning purposes only. It is not adequate for legal boundary definition, regulatory interpretation, or partial final analysis. It should not substitute for actual on-site survey, or separate field research.

Open geographic
Data: public domain

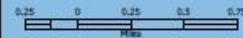


DRAFT



Legend

- Town Line
- ◆ Cape Cod National Seashore
- Historic Resource Designations
 - ◆ National Register of Historic Places
 - ◆ Local Historic District
 - ◆ National Register of Historic Places and Local Historic District
 - ◆ Inventoried Area
 - ◆ National Register Individual Properties



Provincetown Cultural Resources Inventory

September 2014

Date: 09/01/14

Date: 09/01/14

Source Data: Massachusetts Historical Commission, 2014

The information depicted on this map is for planning purposes only. It is not adequate for legal boundary definition, regulatory interpretation, or partial final analysis. It should not substitute for actual on-site survey, or separate field research.



PROCESS: WHERE ARE WE
GOING?

WHAT'S NEXT?

- ANALYSIS & DEVELOPMENT OF PRELIMINARY RECOMMENDATIONS
- WINTER 2015: PRESENTATION OF SCREENED RECOMMENDATIONS
- TRI-TOWN WORKSHOP - SCREENING OF TOWN PROJECTS –
- SUMMER 2015: PRESENTATION OF ENVIRONMENTAL ASSESSMENT
- PRIORITIZE PROJECTS AND ROUTE SELECTION
- PRESENT ROUTE NETWORK AND PRIORITY PROJECTS IN MASTER PLAN
- DECEMBER 2015 COMPLETION TARGET



RESOURCE MAPS & DATA TO BE
POSTED ON WEBSITE:

capecodcommission.org/ocbpmp

National Park Service website:

[http://parkplanning.nps.gov/pedbike`](http://parkplanning.nps.gov/pedbike)

COMMENTS by November 24, 2014

PROJECT INFORMATION & UPDATES

Email: ocbpmp@capecodcommission.org



Exercise 1 “Icebreaker “Dot” Exercise (10 minutes)

To identify key bike & pedestrian ways.

- 10 dots each - color-coded by town of residence.
- Large dots for bikeways that are most important to you. Small dots for pedestrian ways.
- Add any destinations or routes you feel should be included.

Exercise 2 “Hot” Spots & Concerns (15-20 minutes)

To identify areas where bike and pedestrian improvements are needed.

Also to indicate areas of concern.

Mark up and annotate map about nature of hazard or concern.

Exercise 3 Town Priorities (20-25 minutes)

To identify town priorities and issues/opportunities.

Break up into three groups – one for each town. Each group has a town map.

Steering Committee members to facilitate and report back.