

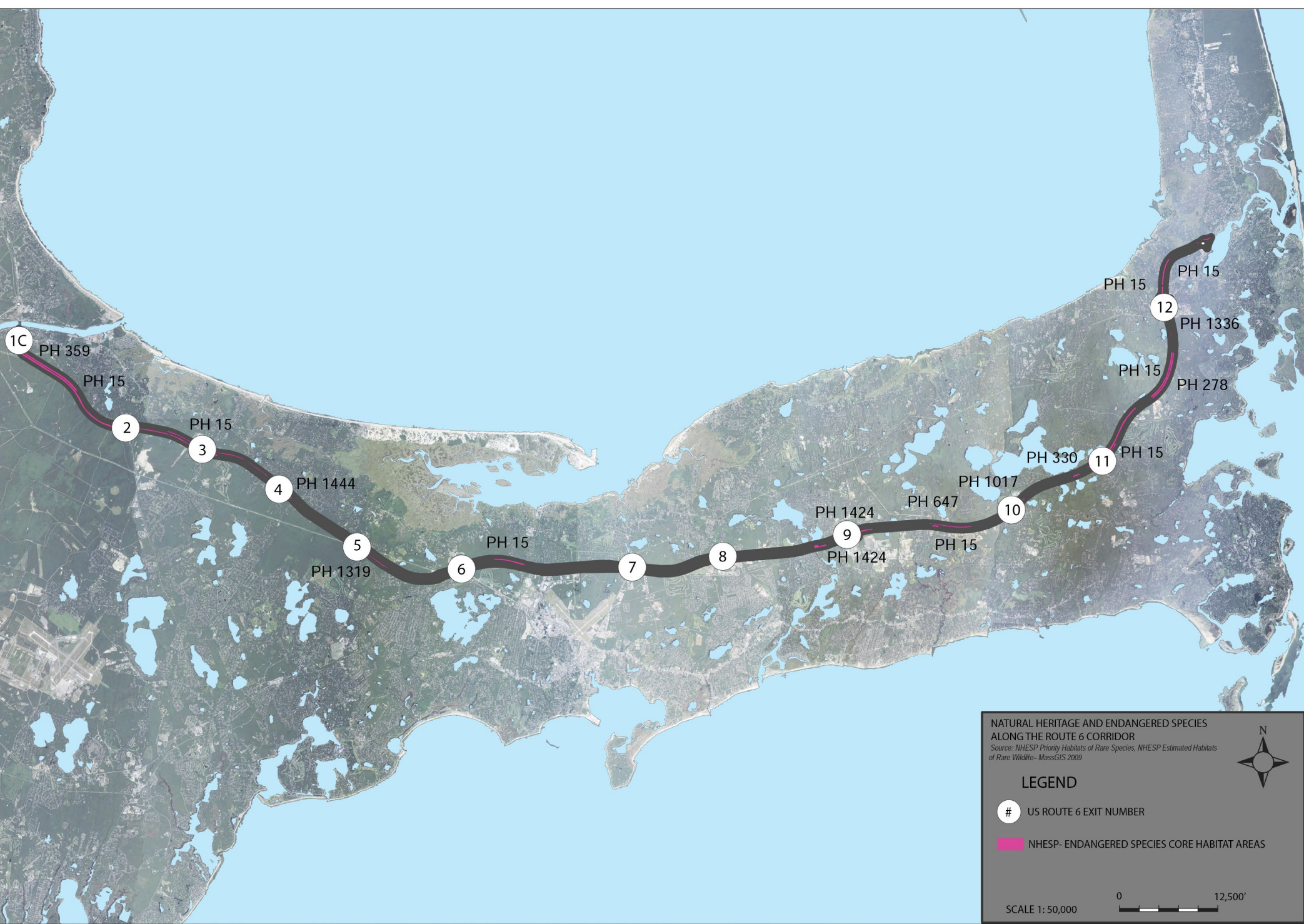
VEGETATION ASSESSMENT ALONG THE ROUTE 6 CORRIDOR
 Source: Disturbed landscape layers from drive-by analysis completed by project team in July 2016. Utilities: Mass GIS Pine Barrens MA Coastal Pine Barrens Partnership

LEGEND		ANALYSIS	
#	US ROUTE 6 EXIT NUMBER		PINE BARRENS
	UTILITY COORIDOR		INVASIVE SPECIES CLUSTER FROM VEHICULAR DRIVE-BY ASSESSMENT
	DISTURBED LANDSCAPE FROM VEHICULAR DRIVE-BY ASSESSMENT		DISTURBED LANDSCAPE FROM VEHICULAR DRIVE-BY ASSESSMENT
	DISTURBED MEDIAN LANDSCAPE FROM VEHICULAR DRIVE-BY ASSESSMENT		DISTURBED MEDIAN LANDSCAPE FROM VEHICULAR DRIVE-BY ASSESSMENT

SCALE 1: 50,000

0 12,500'

N



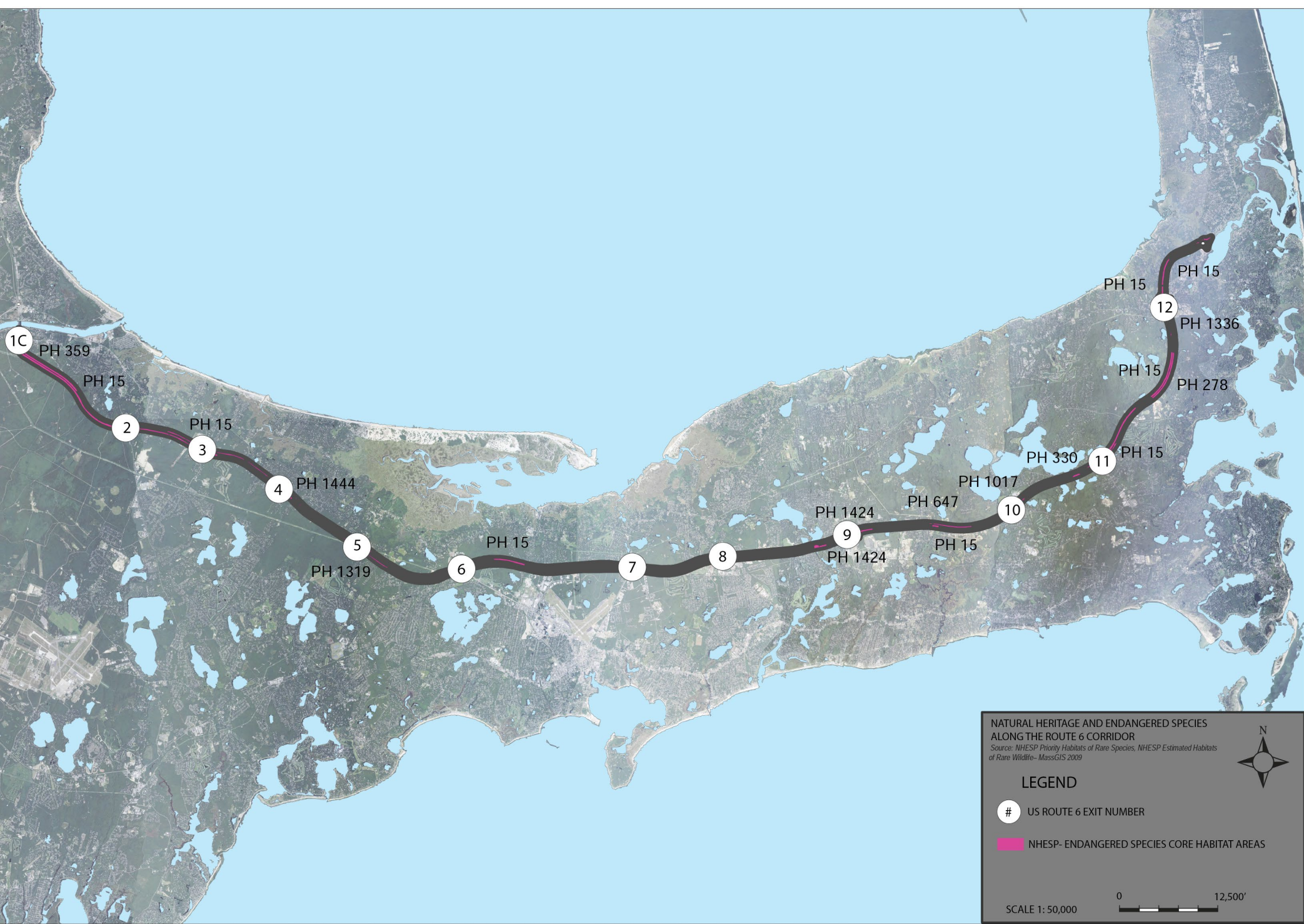
**NATURAL HERITAGE AND ENDANGERED SPECIES
ALONG THE ROUTE 6 CORRIDOR**
 Source: NHPSP Priority Habitats of Rare Species, NHPSP Estimated Habitats of Rare Wildlife - MassGIS 2009

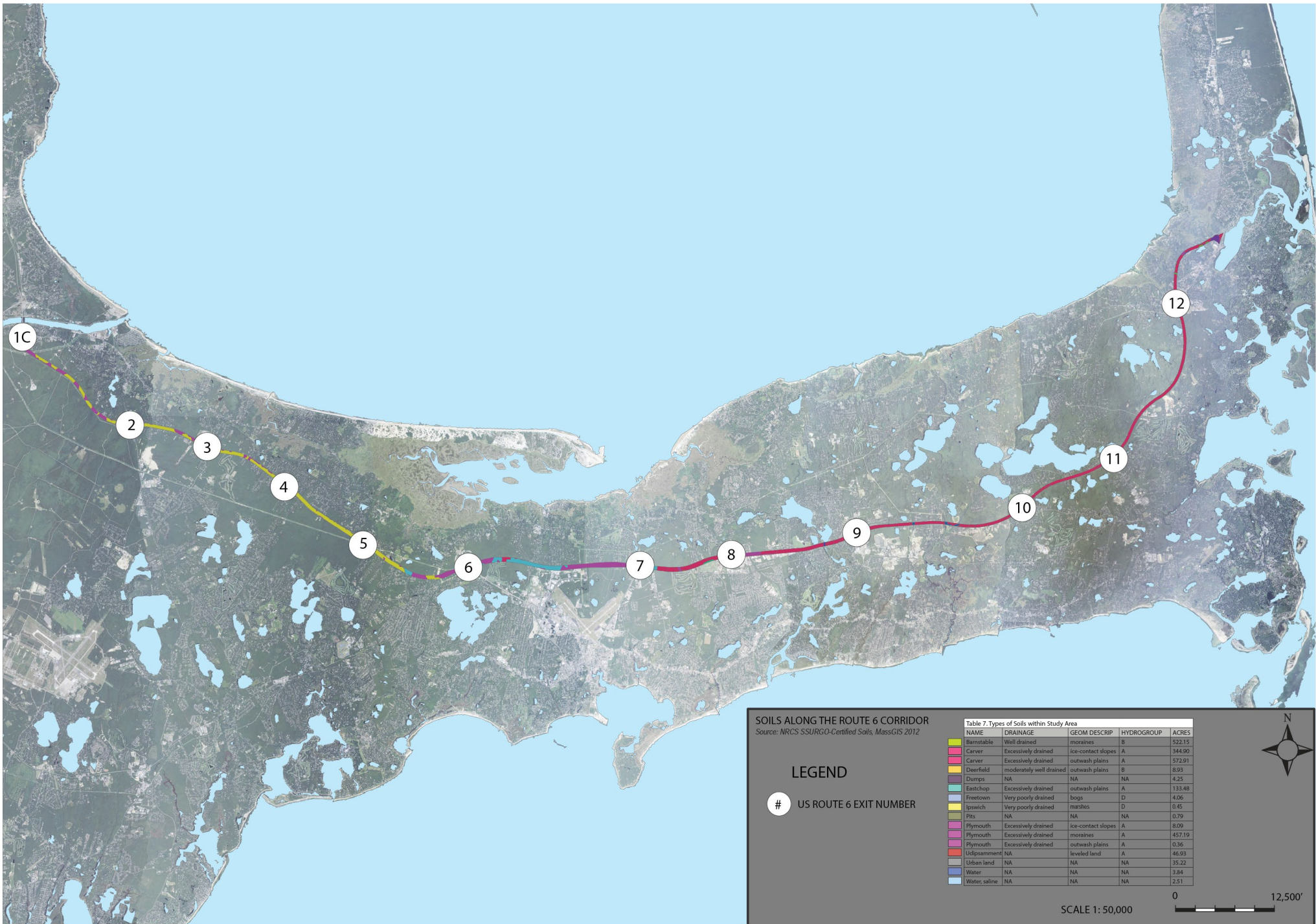
LEGEND

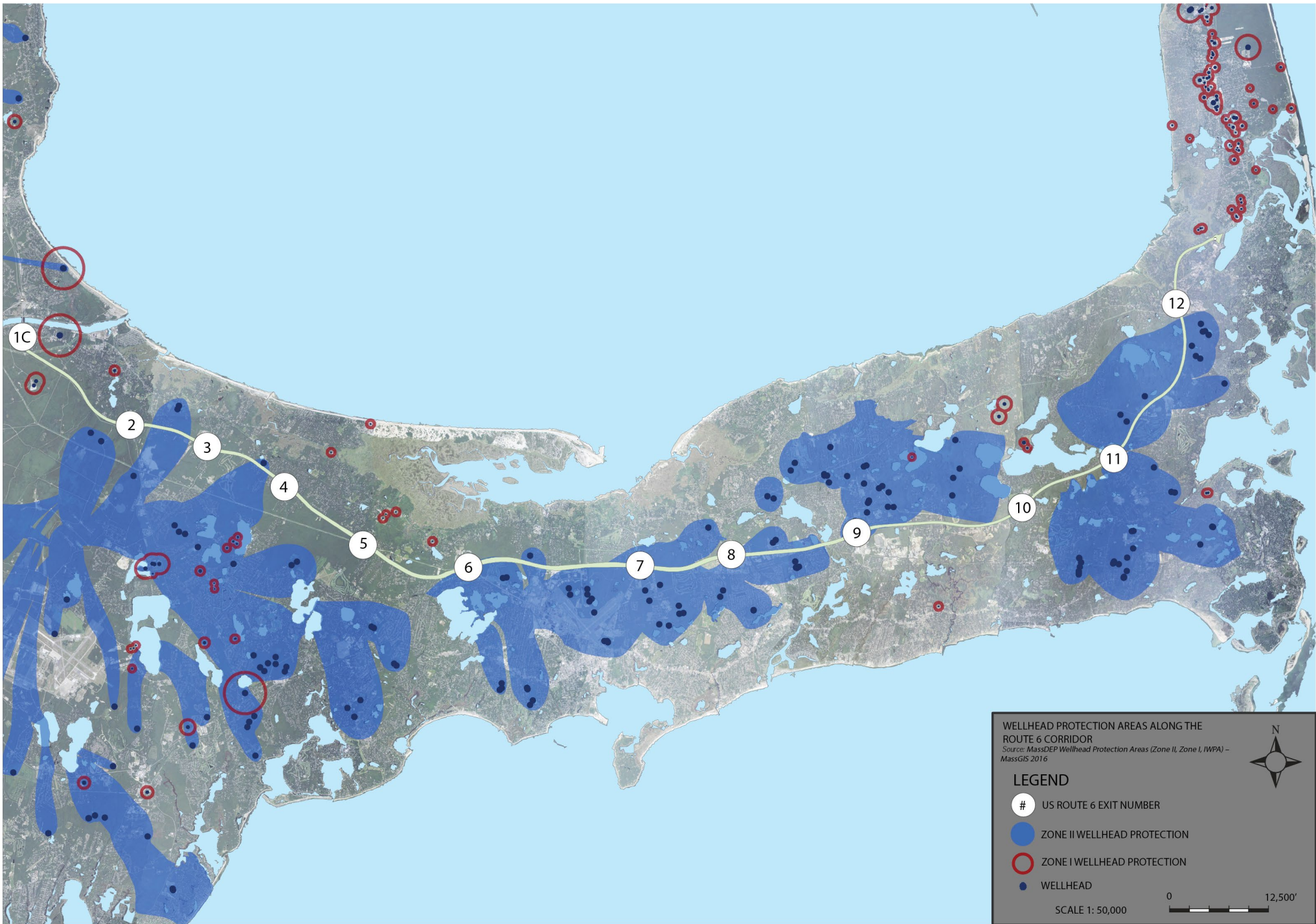
- # US ROUTE 6 EXIT NUMBER
- PH NHPSP- ENDANGERED SPECIES CORE HABITAT AREAS

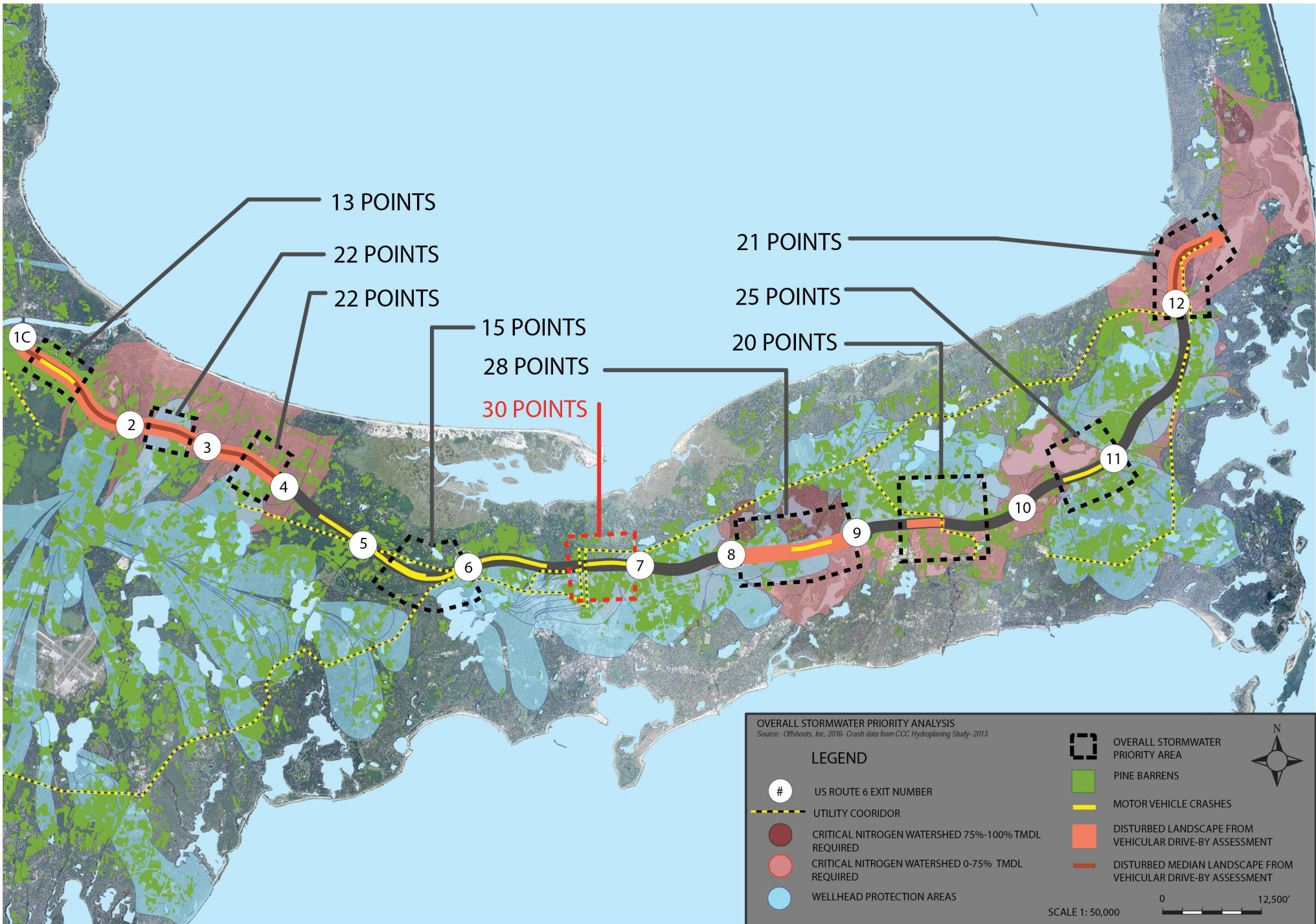
0 12,500'
 SCALE 1: 50,000

N











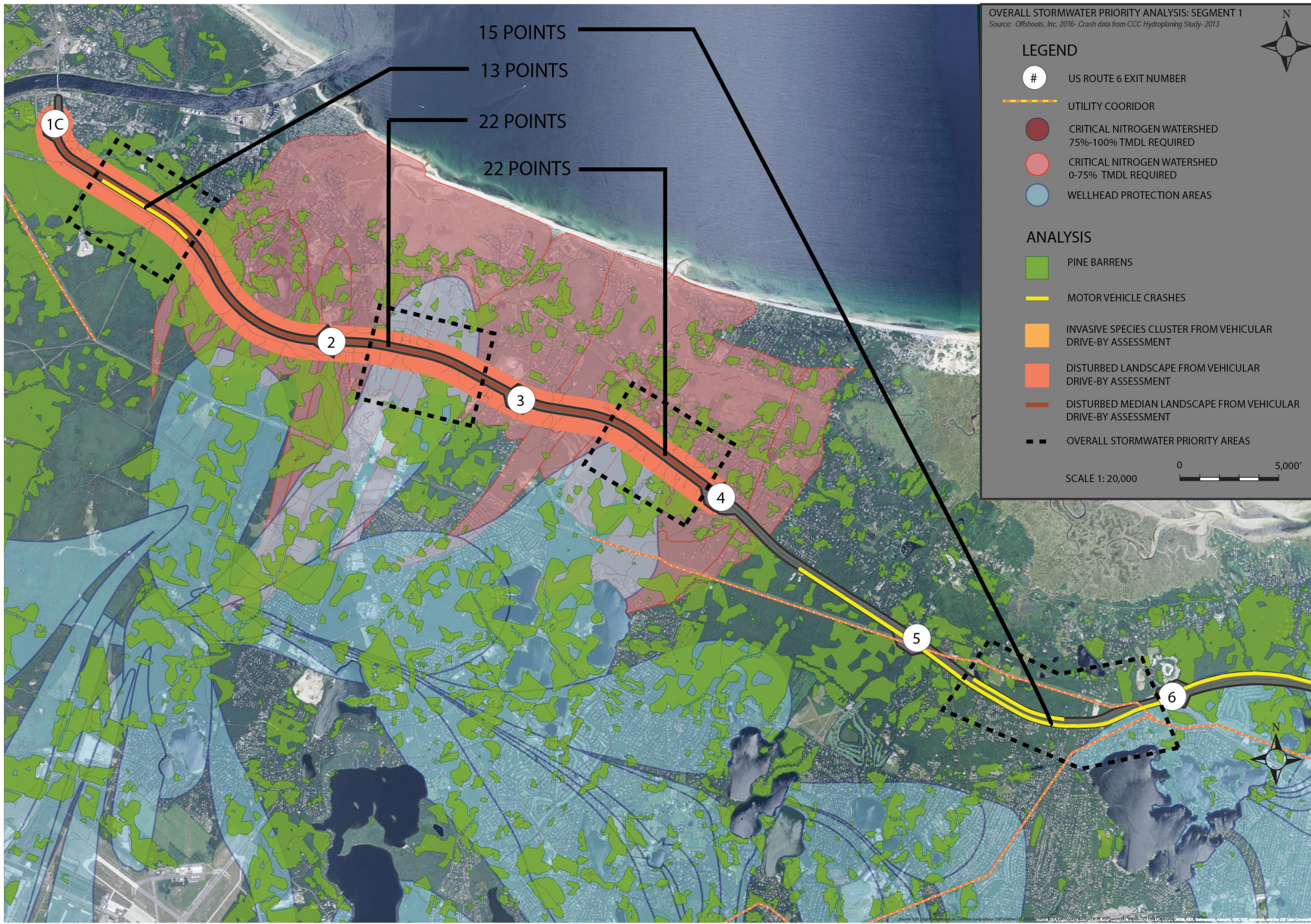
LEGEND

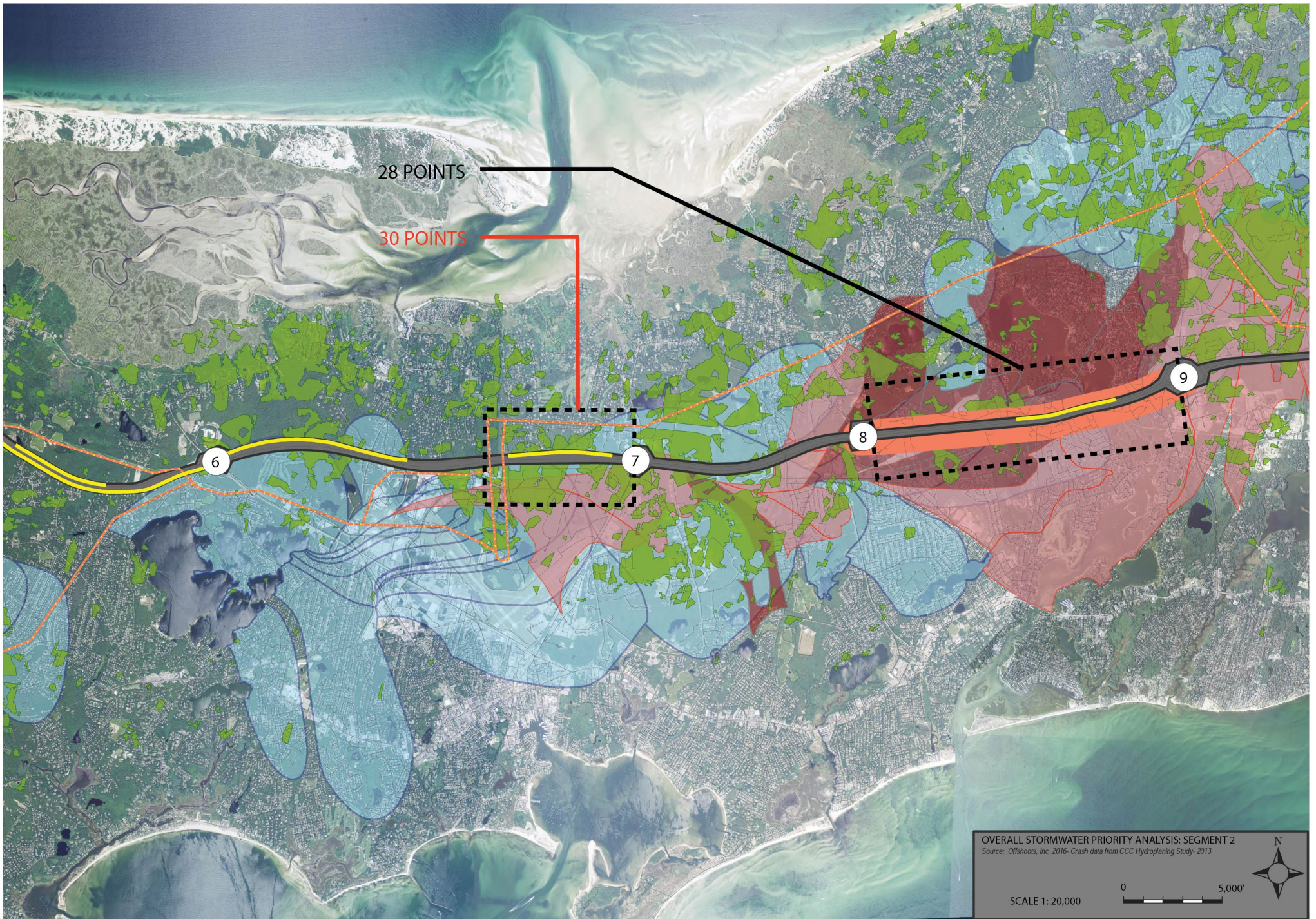
- # US ROUTE 6 EXIT NUMBER
- UTILITY COORIDOR
- CRITICAL NITROGEN WATERSHED 75%-100% TMDL REQUIRED
- CRITICAL NITROGEN WATERSHED 0-75% TMDL REQUIRED
- WELLHEAD PROTECTION AREAS

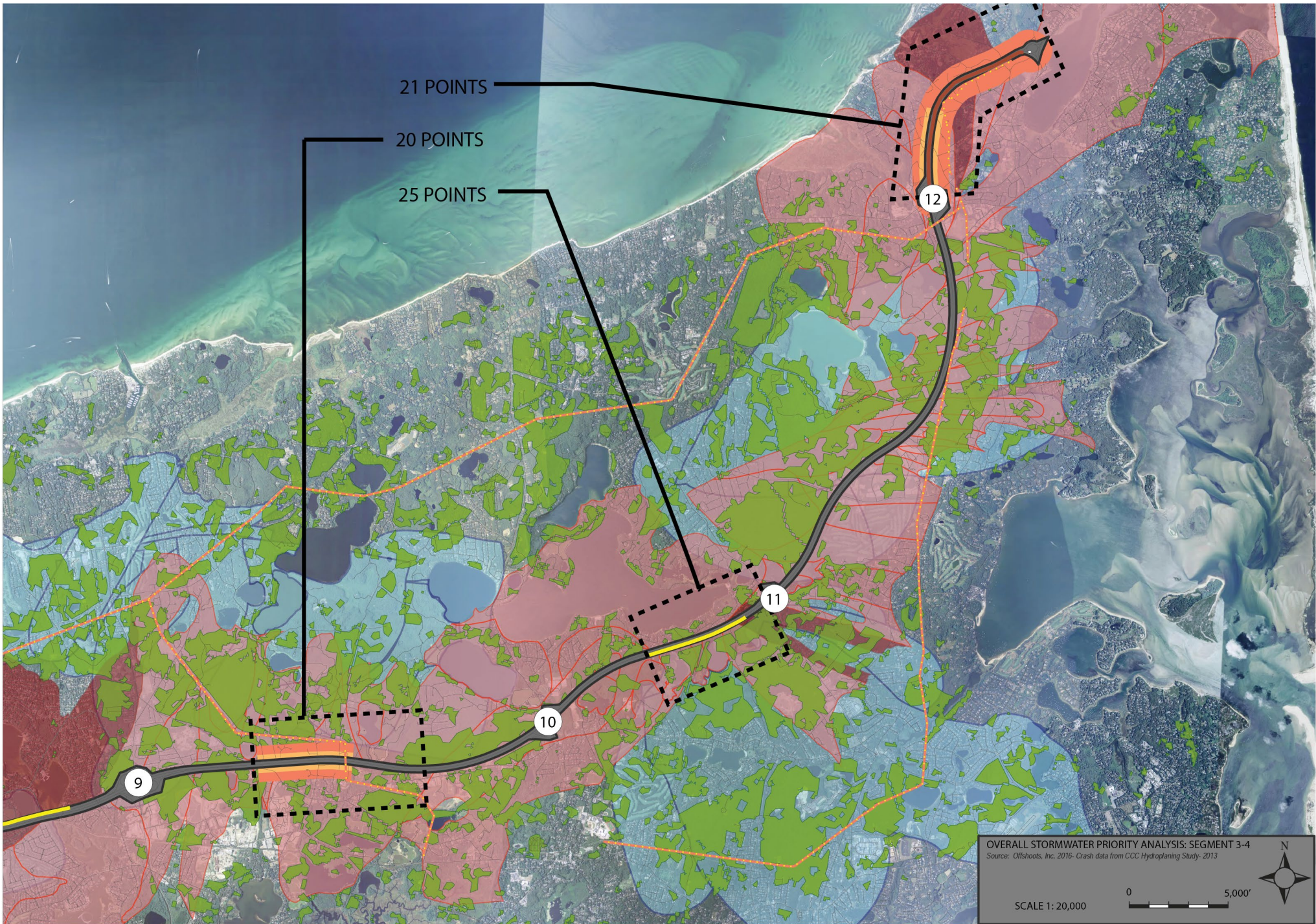
ANALYSIS

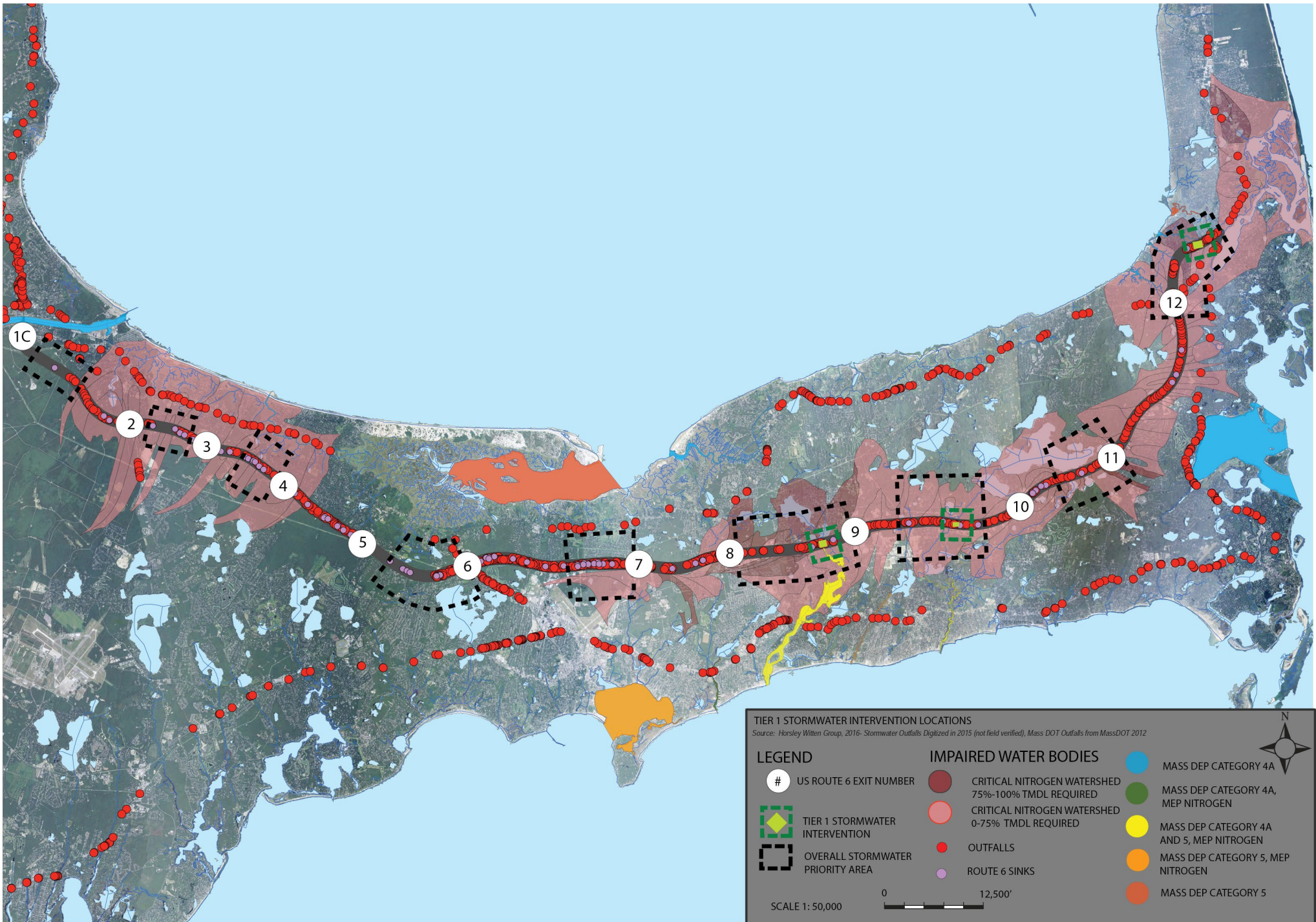
- PINE BARRENS
- MOTOR VEHICLE CRASHES
- INVASIVE SPECIES CLUSTER FROM VEHICULAR DRIVE-BY ASSESSMENT
- DISTURBED LANDSCAPE FROM VEHICULAR DRIVE-BY ASSESSMENT
- DISTURBED MEDIAN LANDSCAPE FROM VEHICULAR DRIVE-BY ASSESSMENT
- OVERALL STORMWATER PRIORITY AREAS

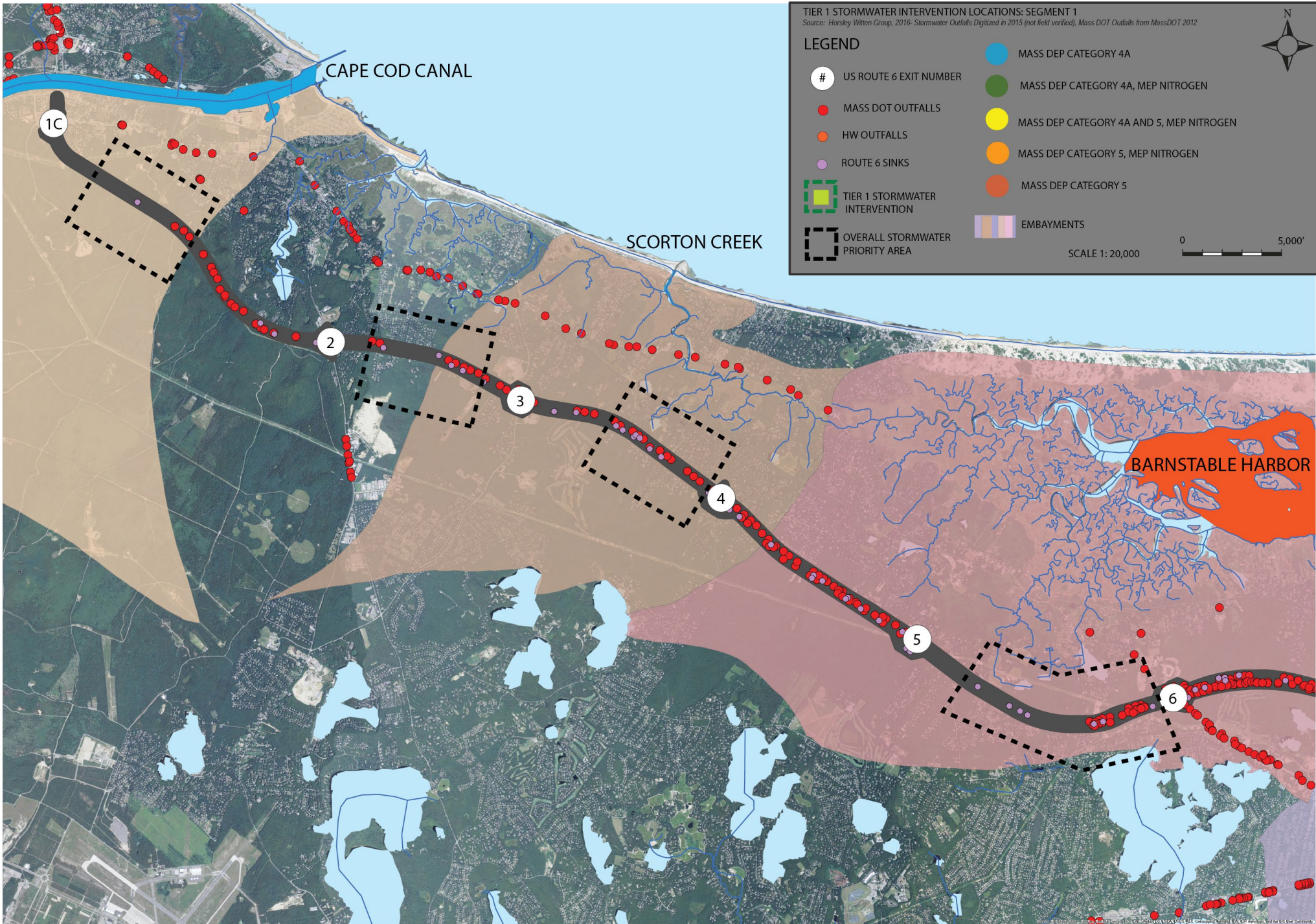
SCALE 1: 20,000 0 5,000'

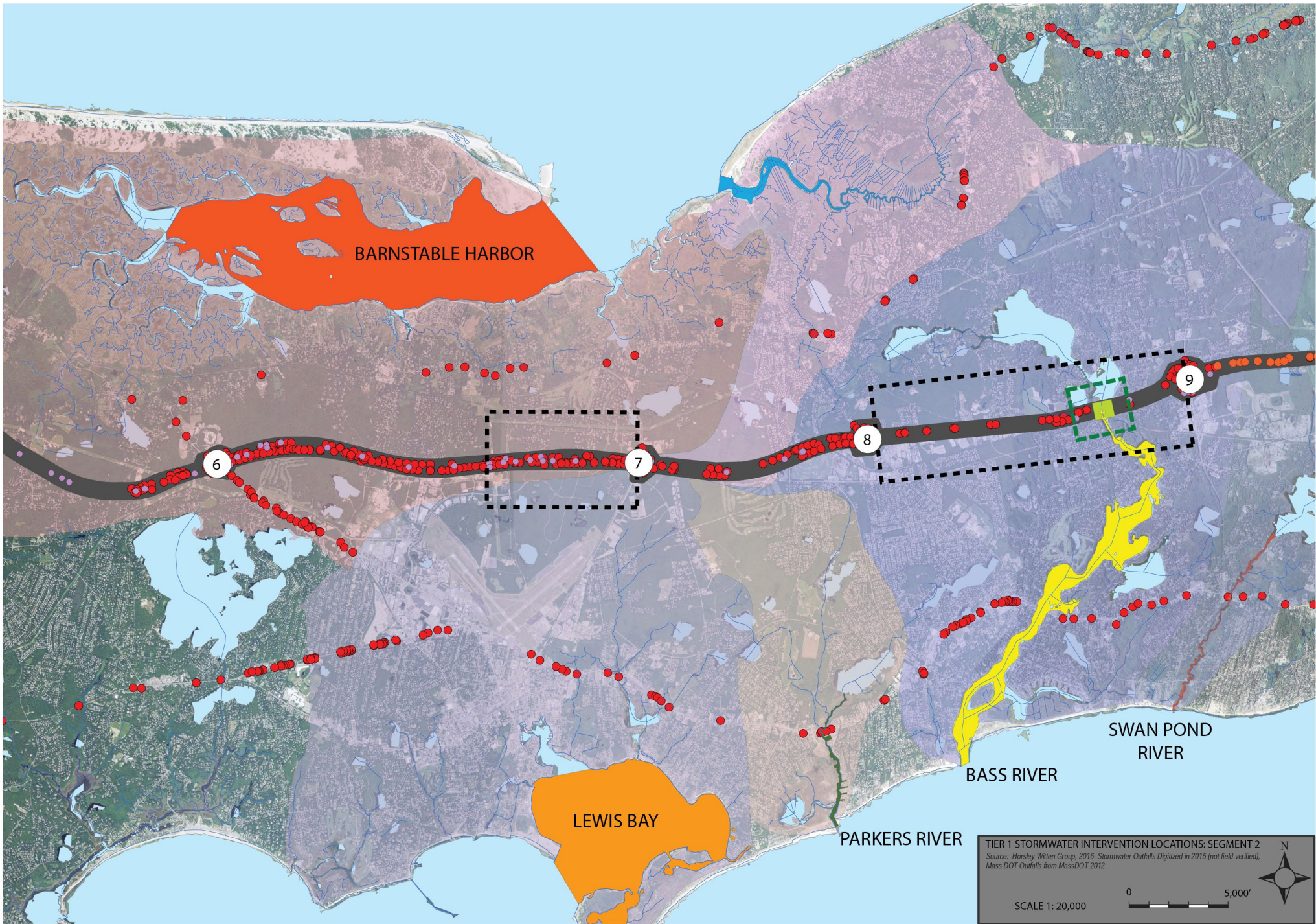












TIER 1 STORMWATER INTERVENTION LOCATIONS: SEGMENT 2
 Source: Horsley Witten Group, 2016- Stormwater Outfalls Digitized in 2015 (not field verified),
 Mass DOT Outfalls from MassDOT 2012

SCALE 1: 20,000

0 5,000'

N

