

PREPARING FOR THE FUTURE: DISASTER PLANNING AND PREPAREDNESS

Cape Cod Commission

Historic Preservation Workshop

Harwich Community Center, Harwich, MA

April 8, 2013

“All Politics are Local.”

Tip O’Neill

“All Disasters Are Local.”

Emergency Management Community

BILOXI PUBLIC LIBRARY, BILOXI, MS, HURRICANE KATRINA, AUGUST 2005



Biloxi Public Library, MS

MARITIME AND SEAFOOD INDUSTRY MUSEUM, BILOXI, MS, HURRICANE KATRINA, AUGUST 2005



MOLD GROWTH, HURRICANE KATRINA, BAY ST. LOUIS, MS, HURRICANE KATRINA, AUGUST 2005



LEGAL FILE DRAWER DAMAGE, HURRICANE KATRINA, BEAUVOIR, MS, HURRICANE KATRINA, AUGUST 2005



MOLD GROWTH, FEDERAL BUILDING, NEW ORLEANS, LA, HURRICANE KATRINA, AUGUST 2005



MONSON PUBLIC LIBRARY, MONSON, MA, JUNE 2011 TORNADO



MONSON TOWN HALL, MONSON, MA, JUNE 2011 TORNADO



DESTROYED CHURCH STEEPLE, MONSON, MA, JUNE 2011 TORNADO



BUILDING DESTRUCTION, MONSON, MA, JUNE 2011 TORNADO



FIVE PHASES OF DISASTER RESPONSE



INSTITUTIONAL DISASTER PLANS

- Crucial to protecting your collections and buildings
- Involve a number of steps
 - Risk Assessment (What are the threats to your staff, building, and collections?)
 - Mitigation planning and implementation
 - Developing emergency procedures
 - Identification of important collections and building components
 - Developing Staff and Emergency Call Lists
 - Creating or finding floor plans of the institution
 - Investigating institutional insurance information (Insured or self-insured?)
 - Assembling emergency supplies
 - Create the actual plan

RELATIONSHIPS

- Response and recovery of your collections and building(s) may rest on your relationships
- Work with your:
 - Staff (involve them in developing the institutional disaster plan)
 - Other Cultural Organizations
 - Emergency Management Director (EMD)
 - Police Department
 - Fire Department
 - Recovery Vendors for collections

RELATIONSHIPS

- Share your completed plan with your EMD and Fire Department
 - Have them tour your facility
 - Will help to identify potential problems and crucial issues
 - Hazards (live ammunition, stuffed animals or birds, chemicals, etc.)
 - Problems for emergency personnel in responding to your facility
 - Identify specific valuable aspects of the building to be protected!
 - They can learn of your special collections and where they are located
 - Services that you can provide in the event of a large disaster (make their lives easier not burden them further)
- Complete the *Cultural Resources Inventory Form* or *Municipal Records Inventory Form*
 - Give it to the local EMD for their Comprehensive Emergency Management Plan (CEMP)



COSTEP MA

Coordinated Statewide
Emergency Preparedness

YOUR EMERGENCY MANAGEMENT PARTNER FOR CULTURAL RESOURCES

COSTEP MA

- **Mission**

- To build and foster a statewide disaster preparedness planning process that serves the cultural and emergency management communities and addresses disaster prevention, preparedness, response, recovery, and mitigation. The process will ensure an ongoing dialogue that promotes mutual understanding and coordination between these communities.

- **Vision**

- That cultural heritage organizations in Massachusetts are prepared for and able to respond to any emergency or disaster. These organizations will work together—and with emergency managers—to ensure the preservation of and access to their collections, thereby strengthening the resilience of their municipalities.



COSTEP MA

Coordinated Statewide
Emergency Preparedness

*Your emergency management
partner for cultural resources*



Click for Immediate Assistance

The Cultural Community	Emergency Management Community	About COSTEP MA	Resources	Forms and Documents	Contact
--	--	---------------------------------	---------------------------	-------------------------------------	-------------------------

Cultural resources are individual objects, collections, and even activities with artistic, educational, historic, scientific, social, or economic importance to a community. They are housed in libraries, museums, archives, historic properties, historical societies, city and town halls, and public records repositories. They include works of art, books, documents, archaeological specimens, furniture, textiles, recordings, significant landscapes, and much more.

Click here to learn about COSTEP MA's latest activities



Find us on Facebook



Prepare. Plan. Preserve.

Many partners are needed to protect and preserve the cultural collections and historic structures and sites that represent the heritage of Massachusetts. Collaborative planning and coordinated response can lessen the damaging effects of disasters and help speed recovery for the institutions that house these collections and the communities themselves. However, the partnerships essential to protecting our cultural heritage need to be in place before disaster strikes, and that is why COSTEP MA exists.

COSTEP MA (Coordinated Statewide Emergency Preparedness in Massachusetts) is a collaborative of representatives of cultural and historical institutions and agencies as well as first responder and emergency management professionals from federal, state, and municipal governments. The purpose of COSTEP MA is to build and foster a statewide emergency planning process that serves the cultural and emergency management communities and addresses disaster prevention, preparedness, response, recovery, and mitigation. The process will ensure an ongoing dialogue that promotes mutual understanding and coordination between these communities, both of which are committed to protecting our Commonwealth's cultural heritage.

Before, during, or after a disaster, COSTEP MA can help.

To learn more about the role each community plays in emergency preparedness and response—and how you can play a part—**click on the images below.**



FEHA/Joseph Augustine



FEHA/Joseph Augustine

The Cultural Community	Emergency Management Community	About COSTEP MA	Resources	Forms and Documents	Contact	Back to Top
--	--	---------------------------------	---------------------------	-------------------------------------	-------------------------	-----------------------------

www.mass.gov/mblc/costepma

COSTEP MA: BUILDING RELATIONSHIPS THROUGHOUT MASSACHUSETTS

- Bringing together the staffs of Cultural Resources of all types and Emergency Managers
 - Introductions in some cases, but facilitating cooperation and collaboration
- Developed the:
 - *Protection of Cultural and Historical Resources Annex to the Massachusetts Comprehensive Emergency Management Plan (CEMP)*
 - *Cultural Resources Inventory Form* (http://mbhc.state.ma.us/costepma/wp-content/uploads/2012/07/COSTEP_MA_CRIF_Cultural.pdf)
 - *Municipal Records Inventory Form* (http://mbhc.state.ma.us/costepma/wp-content/uploads/2012/07/COSTEP_MA_CRIF_Municipal.pdf)
 - *Command and Control Structure* (http://mbhc.state.ma.us/costepma/wp-content/uploads/2012/07/COSTEP_MA_Command-Control.pdf)

COSTEP MA: BUILDING RELATIONSHIPS THROUGHOUT MASSACHUSETTS

- *Establishing Relationships with Disaster Recovery Vendors*
(<http://mblc.state.ma.us/costepma/wp-content/uploads/2013/03/Establishing-Relationships-with-Disaster-Recovery-Vendors.pdf>)
- Added three recovery vendors to Massachusetts state contract
 - Belfor, Polygon, and BMS CAT
- Promulgating information through the *Weather Alerts*
- Working with FEMA in using public libraries as Disaster Recovery Centers (DRCs)

RELATIONSHIPS WITHIN COMMUNITIES

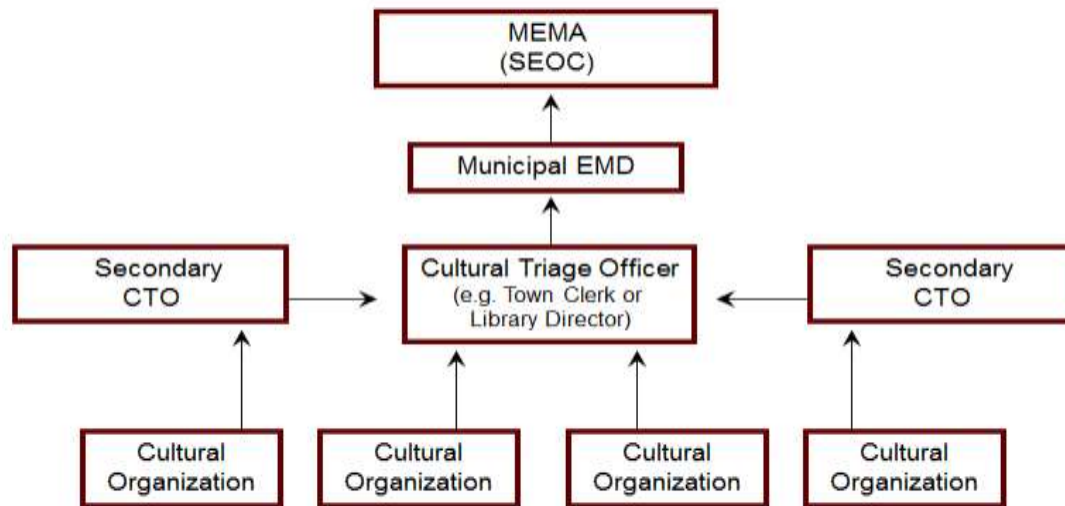


COSTEP MA

Coordinated Statewide
Emergency Preparedness

AN EMERGENCY MANAGEMENT FRAMEWORK FOR CULTURAL RESOURCES

Command and Control Structure



Acronyms:

CTO: Cultural Triage Officer

EMD: Emergency Management Director

MEMA: Massachusetts Emergency Management Agency

SEOC: State Emergency Operations Center

HAZARD MITIGATION GRANT PROGRAM (HMGP) GRANT FROM FEMA

- Focus is on:
 - Working on risk assessment and mitigation planning for cultural resources (outreach)
 - Working with the Regional Planning Authorities (RPAs)
 - Community meetings and building relationships throughout Massachusetts (14 planned)
 - Great opportunity to bring together the cultural organizations, town administration, emergency management, to create a community-wide organization/disaster-response network
 - Identify risks, plan mitigation steps, work together to minimize impact on the organizations and the EMD
 - Risk Assessment and Mitigation Planning Workshops (4 planned)
 - Producing a short video to bring home the message

RELATIONSHIPS WITH COLLEAGUES/OTHER CULTURAL INSTITUTIONS

- Working together builds a community for:
 - Risk Assessment
 - Mitigation
 - Preparedness
 - Response
 - Recovery
- Keeps momentum going while developing one's institutional disaster plan
- Strength in numbers in working with the local EMD
 - What can you do to make his/her job easier?
 - Available for assistance in the event of a disaster

FOCUSING BEYOND YOUR INSTITUTION

- Whom would you call in an emergency?
 - Remember “All disasters are local.”
 - Cultural Triage Officer ->
 - Local Emergency Management Director (EMD) ->
 - State Emergency Management Agency (SEMA) ->
 - Federal Emergency Management Agency (FEMA)
- How best to allocate resources?

FOCUSING BEYOND YOUR INSTITUTION

- What can you do from here?
 - Contact other cultural organizations as well as the EMD, Town administration, Fire Chief, Police Chief in your town
 - Be inclusive (libraries, historical societies, churches, town clerk, museums, etc.)
 - Organize yourselves with the *Command and Control Structure*
 - Make sure you get buy-in from the EMD, Fire and Police Chiefs, and Town administration
 - Best way to protect the cultural heritage of your community and Cape Cod
 - Develop protocols and relationships with the other cultural organizations
 - Collaborate in developing institutional disaster plans
 - Identify ways in which you can work together to benefit everyone

CONCLUSION

- Remember: Your buildings' and collections' health and long-term survival is in your hands!
 - Without a Disaster Plan you could lose everything.
 - Without relationships with other cultural organizations you could be without assistance in the event of a disaster
 - Without relationships with the EMD, Fire Department, Police Department, and Recovery Vendors you could find your collections and institutions in complete ruin because of a delayed response
- Take the necessary steps NOW to protect your collections and buildings

**NOT ONLY CAN IT HAPPEN,
IT PROBABLY WILL HAPPEN!**

GREGOR TRINKAUS-RANDALL

Preservation Specialist

Massachusetts Board Of Library Commissioners

(617) 725-1860 X 236 or (800) 952-7403 X 236 (in-state)

gregor.trinkaus-randall@state.ma.us