

EXPLANATION

Annual range of ground-water level, in feet

A	0 - 2
B	2 - 3
C	3 - 4
D	4 - 5
E	5 - 6

MIW-29 Index observation well to be used for area delineated by dashed line.

A1W-230 Index observation well location and identification number.

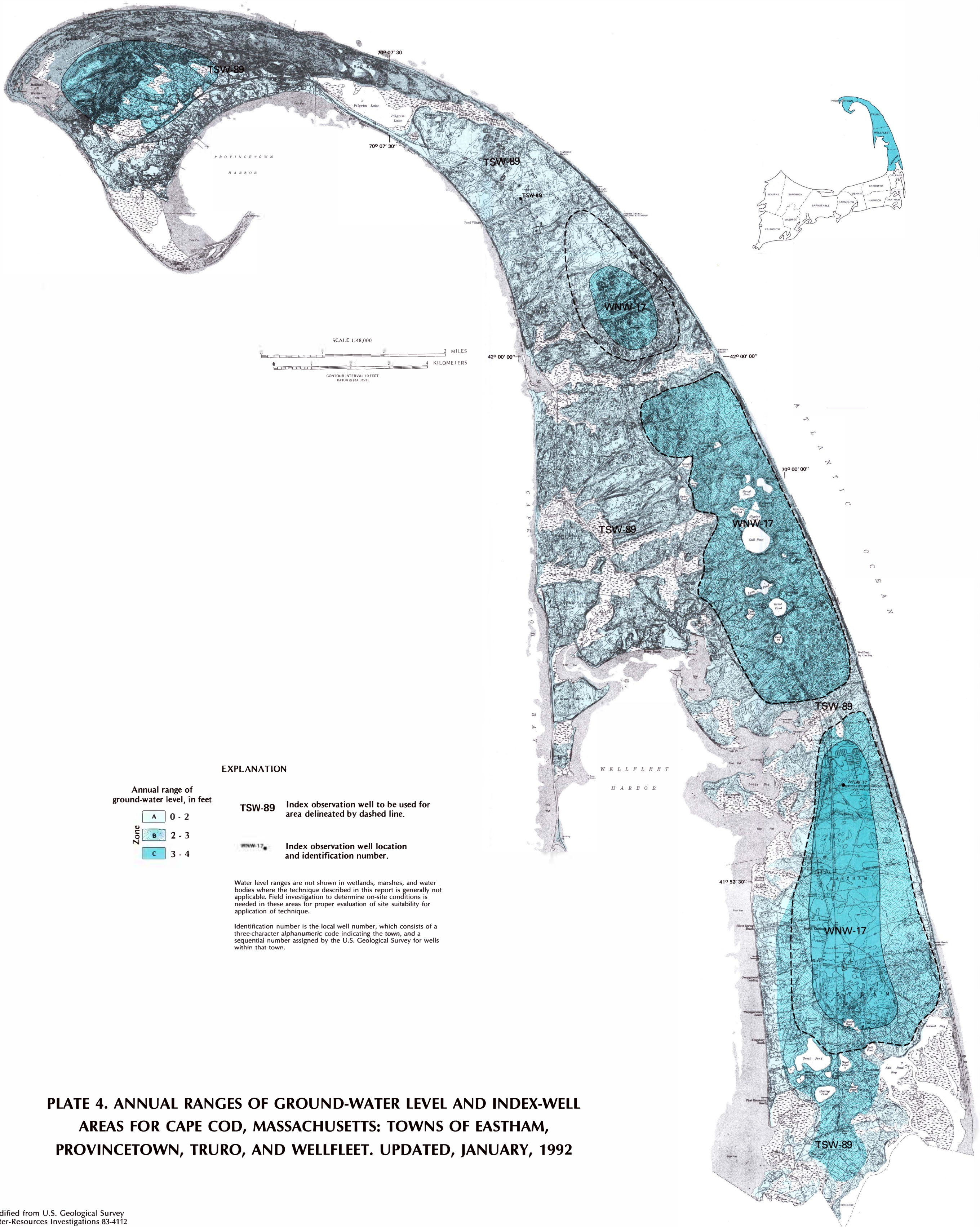
Water level ranges are not shown in wetlands, marshes, and water bodies where the technique described in this report is generally not applicable. Field investigation to determine on-site conditions is needed in these areas for proper evaluation of site suitability for application of technique.

Identification number is the local well number, which consists of a three-character alphanumeric code indicating the town, and a sequential number assigned by the U.S. Geological Survey for wells within that town.

Modified from U.S. Geological Survey
 Water Resources Investigations 83-4112

Base from U.S. Geological Survey
 1:24,000 quadrangles.

**PLATE 2. ANNUAL RANGES OF GROUND-WATER LEVEL AND INDEX-WELL AREAS FOR CAPE COD, MASSACHUSETTS:
 TOWNS OF BARNSTABLE AND YARMOUTH. UPDATED JANUARY, 1992.**



EXPLANATION

Annual range of ground-water level, in feet

- | | |
|--------|-------|
| Zone A | 0 - 2 |
| Zone B | 2 - 3 |
| Zone C | 3 - 4 |

TSW-89 Index observation well to be used for area delineated by dashed line.

WNW-17 Index observation well location and identification number.

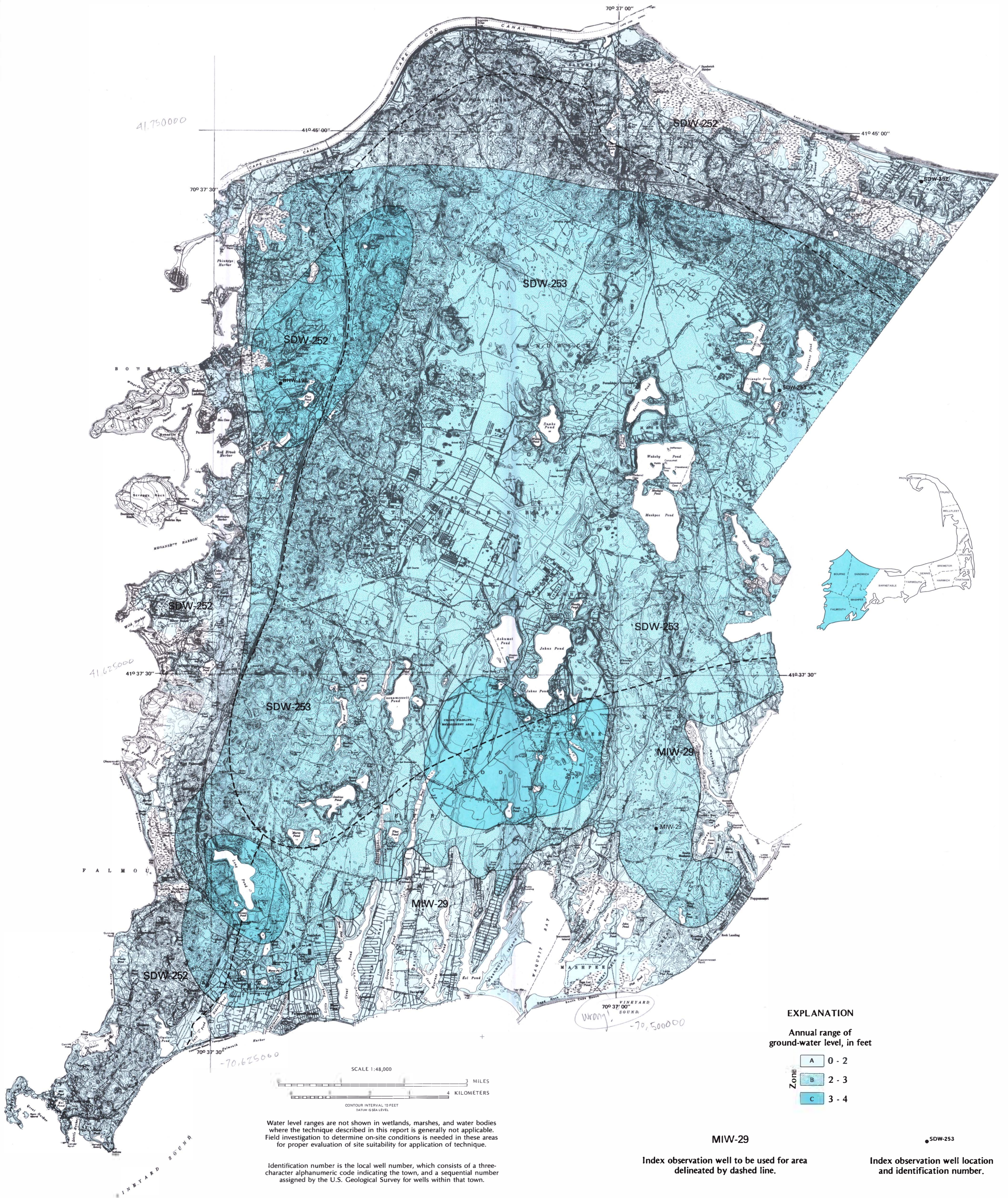
Water level ranges are not shown in wetlands, marshes, and water bodies where the technique described in this report is generally not applicable. Field investigation to determine on-site conditions is needed in these areas for proper evaluation of site suitability for application of technique.

Identification number is the local well number, which consists of a three-character alphanumeric code indicating the town, and a sequential number assigned by the U.S. Geological Survey for wells within that town.

PLATE 4. ANNUAL RANGES OF GROUND-WATER LEVEL AND INDEX-WELL AREAS FOR CAPE COD, MASSACHUSETTS: TOWNS OF EASTHAM, PROVINCETOWN, TRURO, AND WELLFLEET. UPDATED, JANUARY, 1992

Modified from U.S. Geological Survey Water-Resources Investigations 83-4112

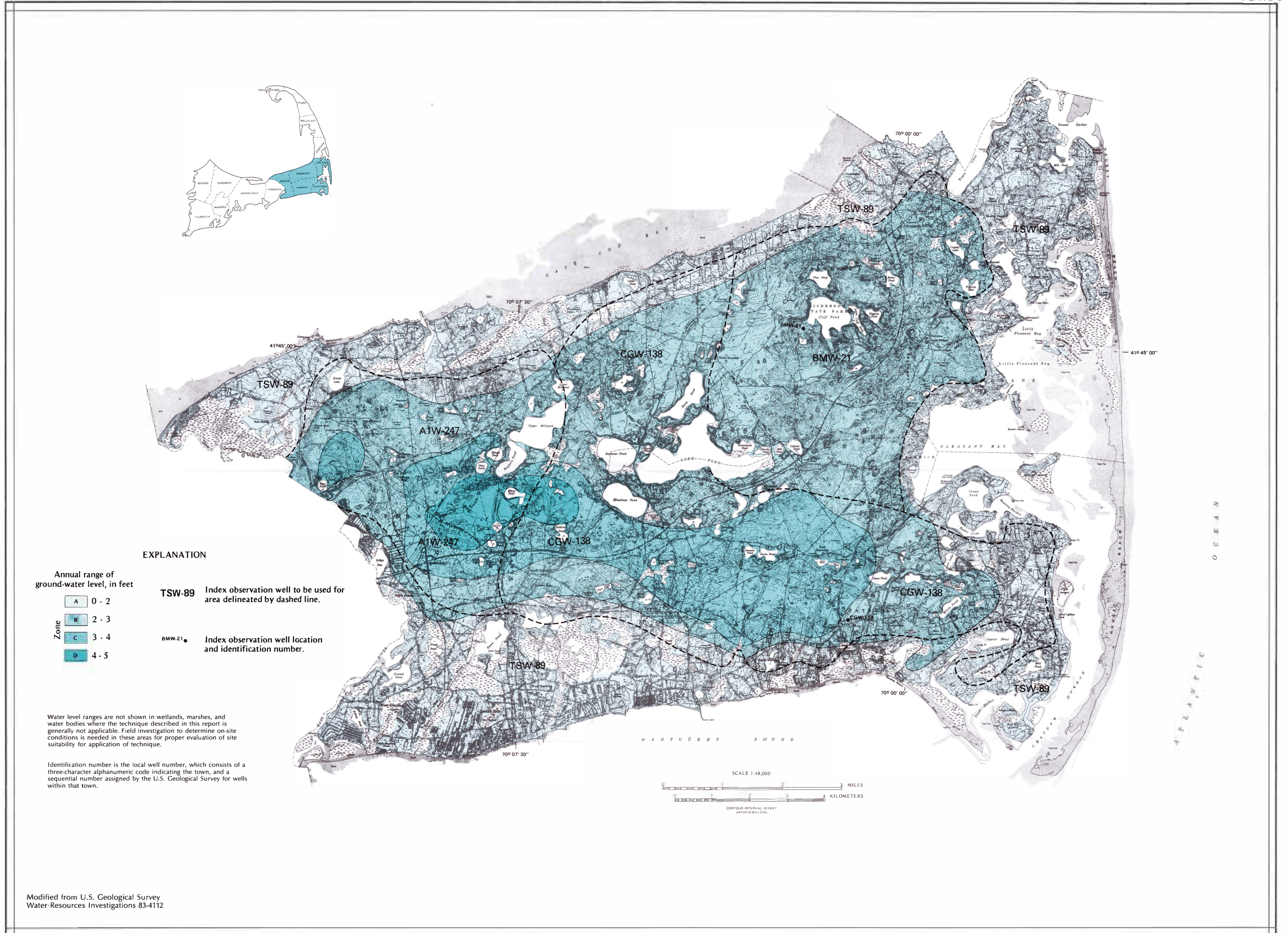
Base from U.S. Geological Survey 1:24,000 quadrangles.



Modified from U.S. Geological Survey
 Water-Resources Investigations 83-4112

Base from U.S. Geological Survey
 1:24,000 quadrangles.

**PLATE 1. ANNUAL RANGES OF GROUND-WATER LEVEL AND INDEX-WELL AREAS FOR CAPE COD, MASSACHUSETTS:
 TOWNS OF BOURNE, FALMOUTH, MASHPEE, AND SANDWICH. UPDATED, JANUARY, 1992.**



Modified from U.S. Geological Survey
 Water-Resources Investigations 83-4112

Base from U.S. Geological Survey
 1:24,000 quadrangles.

INTERIOR - GEOLOGICAL SURVEY, RESTON, VA - 1984 - 108421

**PLATE 3. ANNUAL RANGES OF GROUND-WATER LEVEL AND INDEX-WELL AREAS FOR CAPE COD, MASSACHUSETTS:
 TOWNS OF BREWSTER, CHATHAM, DENNIS, HARWICH, AND ORLEANS. UPDATED, JANUARY, 1992.**